

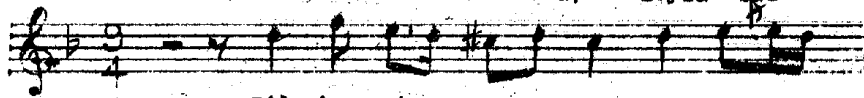
Ağır Aksak

SULTANİYEHAN SAHKE

esare ve Gıfte

(Dilberim terk-i sebata)

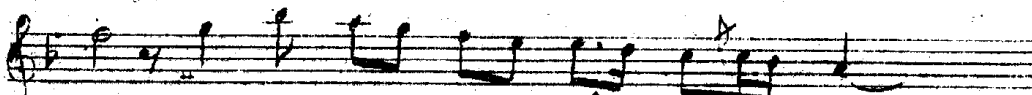
Leylâ Sâz



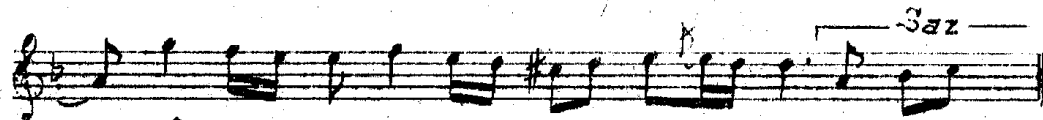
Dil be rim..... ter.....



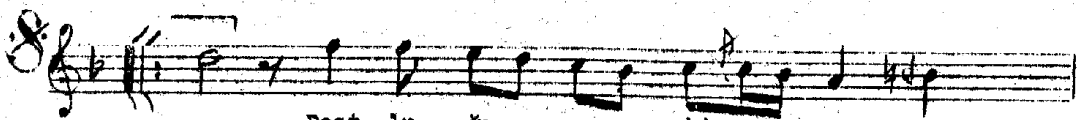
..... ki se bâ..... ta.....



... her za ma..... nâ

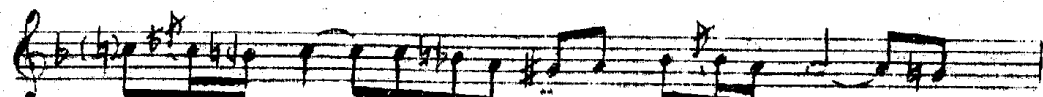


.. nâ..... de dir



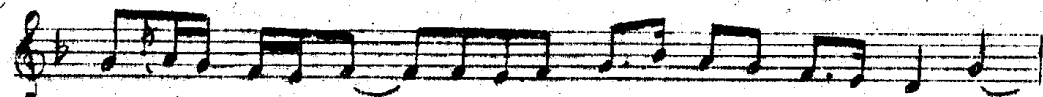
Dest lu ğa..... bi

Sev di ğim kay



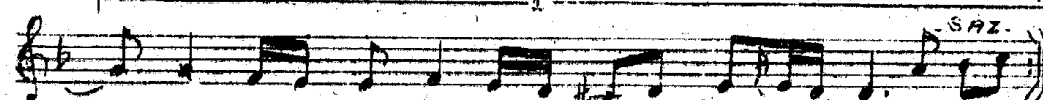
..... gâ...he her..... oâ

di vo fâ dan



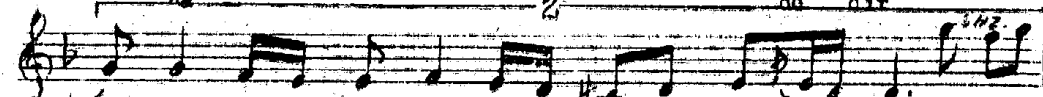
.....1 .. li ğo..... uf.....

her ğa man â



tâ de dir

ze de dir



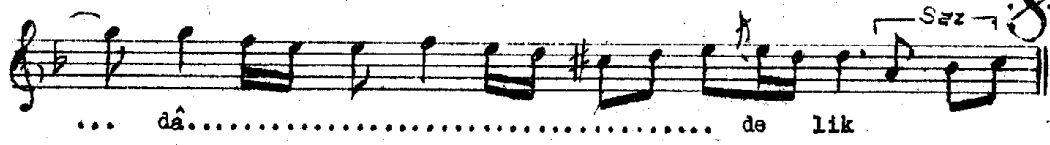
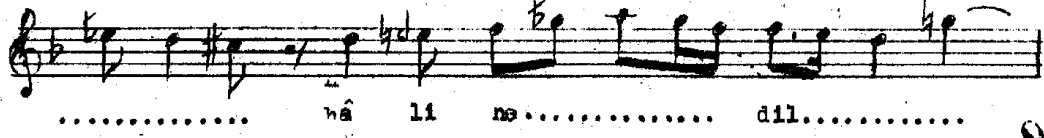
tâ de dir



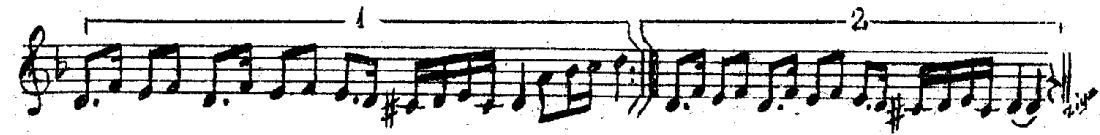
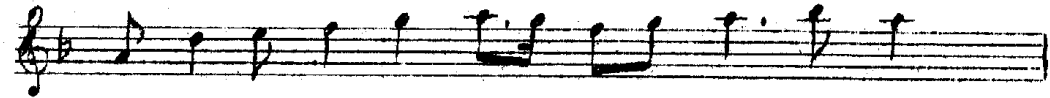
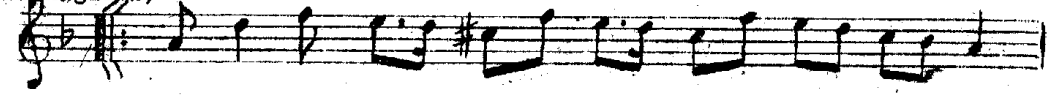
Roş ge lir..... â



Sultaniyegâh Şarkının devamı



(Aranağmesi)



Dilberin tırk-î sebâğê her zaman âmededir
Dostluğâ bigâne herçarlığı ârtâdedir
Hoş gelir avarelik o mâlinê dil dâdedir
Sevdiğim kayd-î vefâdan dâima âzâdedir.

Sebat - Sabır
Âmede - gazır
Bigâne - Yabancı
Ârtâde - Düşkün
Avarelik - Başıboşluk
Dildâde - Gönül vermiş
Âzâde - Serbest