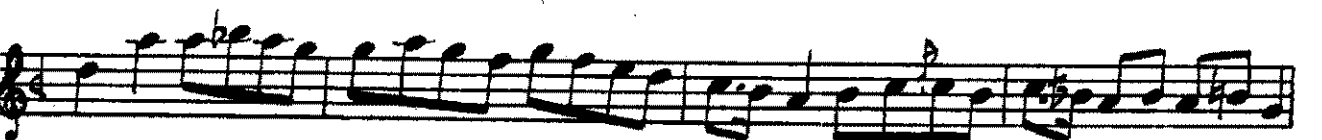
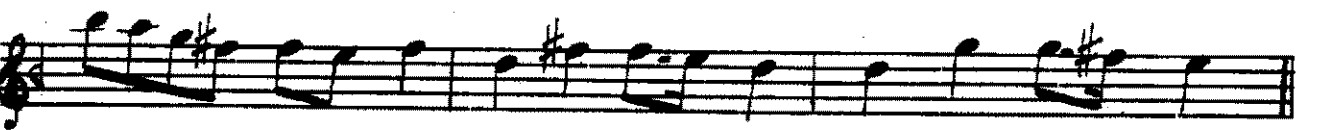
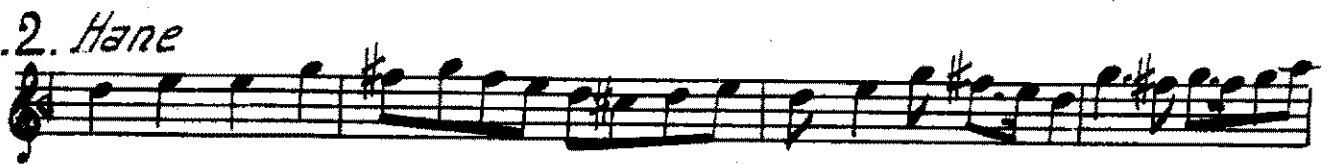
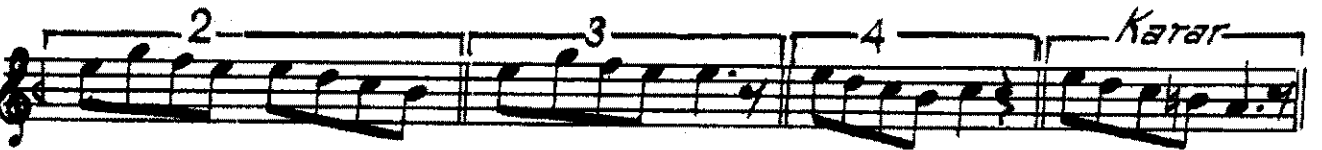
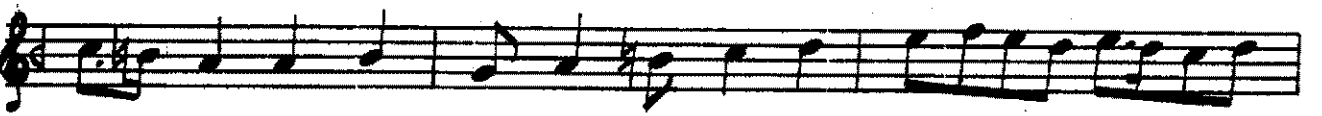
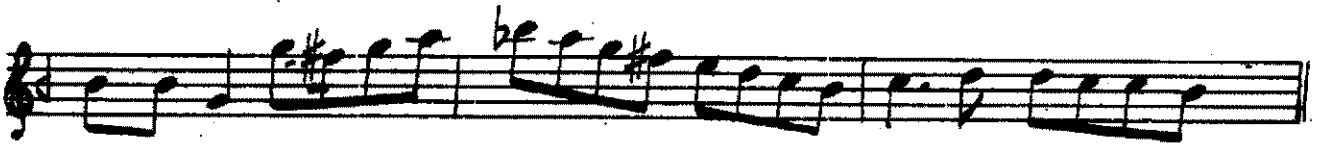
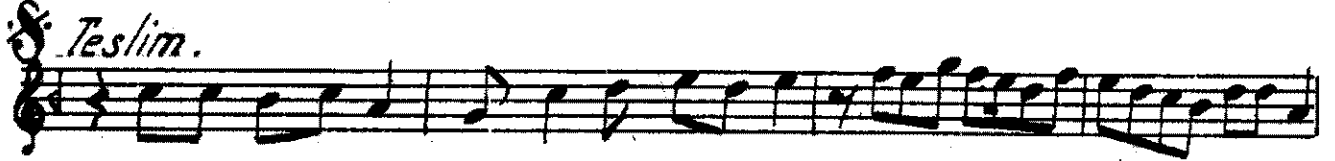
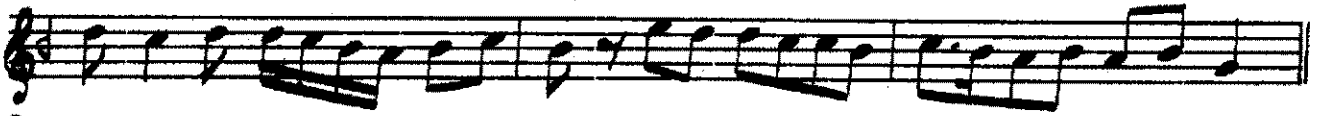
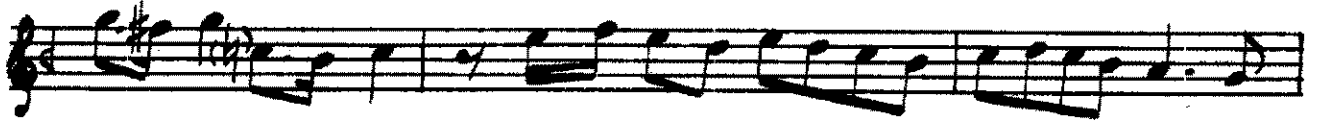
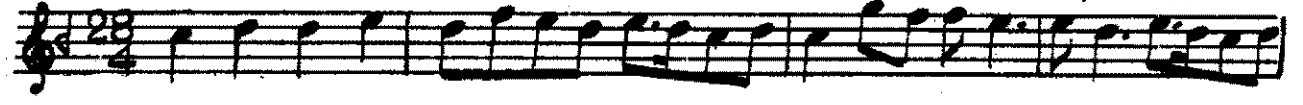


Devr-i kabir

BEYATİ BÖSELİK PEŞREVI

Derviş Halil Can



BEYATI BÜSELİK AYIN-I ŞERİFİ

Devr-i revan

Zekâi Zâde Hâfız Ahmed Efendi



Ey de ta ver de ci ha ni rā . . . zi nāy . . .



hey yi hey sul tā ni men . . . hey yi hey hūn kā rı men



Ban ki nā yū ban ki nā yū ban . . . ki nāy . . .



Hey yi hey sul tā ni men . . . hey yi hey hūn kā rı men



Hod hu da yest in he me ru pu . . . su çist . . .



hey yi hey sul tā ni men . . . hey yi hey hūn kā rı men



mi ke se deh li hu da tā tā . . . hu day . . .



hey yi hey sul tā ni men . . . hey yi hey hūn kā rı men



hey yi hey tā nā yi men . . . hey yi hey zi bā yi men



yār . . . yār . . . yār yū re gīm yār . . .



yār yū re gīm del ci ge rim gör ki ne ler var . . .



yār . . . yār . . . yā re hā ber var

ey nu şı ker . . . de ni şı ta Saz

bi . hiş . . . kün . . . ba hiş . . . ta

ba hi şı kün . . . bi hi şı ta Saz

çi . zi bi dih . . . der viş . . . ta

Teş . ri fi dih . . . uş şak ta .

pür . nür . kün . . . a fak . . . ta

ber zeh ri zen . . . tir . . . yak . ta . Saz

çi . zi bi dih . . . der viş . . . ta

ya ri ma dil da ri ma . . . a li mi es ta ri ma

yu su fu di da ri ma . . . rev na ki ba za ri ma

hey yi hey . . . hey dost . . . pi ri men ca na ni men

ger be bos tan ba tu im har şüd gül za ri ma

Can . . . i . . . ma . . . ni . . . meni
ved . . . sad . . . ca . . . ni . . . meni

ah . . . i . . . ma . . . ni . . . meni

Ah rin . . . da . . . dan . . . se la
Ah ey . . . seth . . . seth . . . hü sa

me ti mi . . . kü ned
med. di . . . ni ma

Saz
can . . . ra . . . ta . . . gu la
ey . . . fa . . . fah . . . ri cu

la . . . met . . . mi . . . kü ned
cum . . . le . . . E . . . Ev . . . ya

mes . . . ti . . . ti . . . zi ca
Ey . . . e . . . ez . . . tu ca

ca . . . met . . . mi . . . kü ned
can . . . ra . . . a . . . si na

ah . . . mes . tan . . . se la
ah . . . " . . . " . . . " . . . "

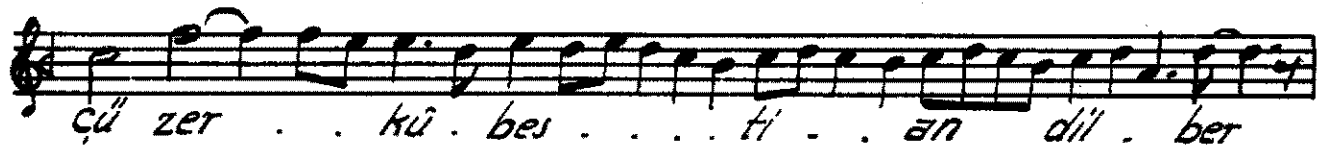
la . . . met . . . mi . . . kü ned
" . . . " . . . " . . . " . . . "

Hevneü Selâm

Frenkcin
Sa la . . . can . . . ha . . . yî . . . müs . ta . kan . . .



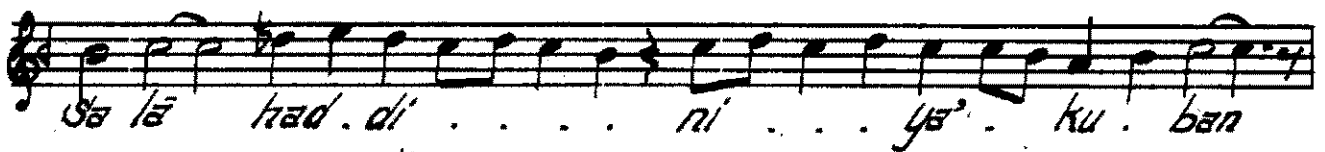
ki . yek dil . da . . . ri . . kub : a . med



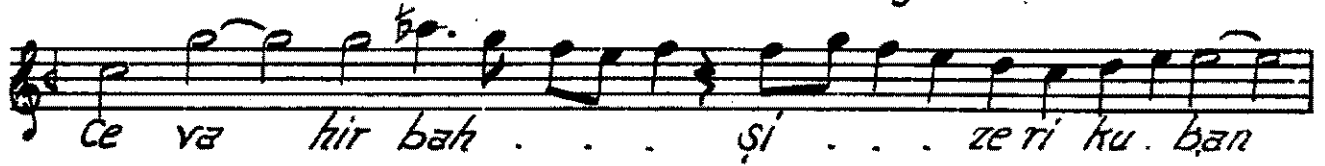
cū zer . . kû . bes . . . ti . . an dil . ber



rû hi . . men si . . . mi . . kub . a . . med



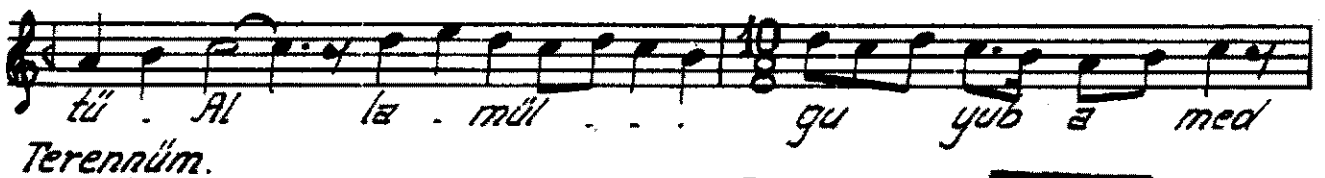
Sa lā had . di . . . ni . . . ya . ku . ban



ce va hir bah . . . şı . . . ze ri ku . ban

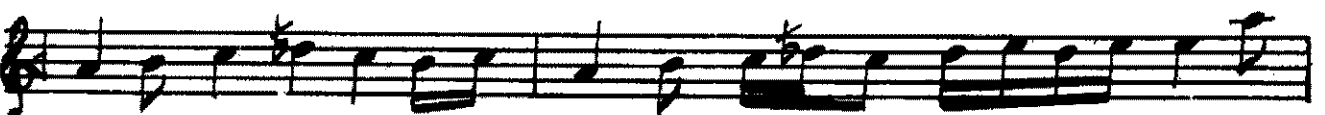
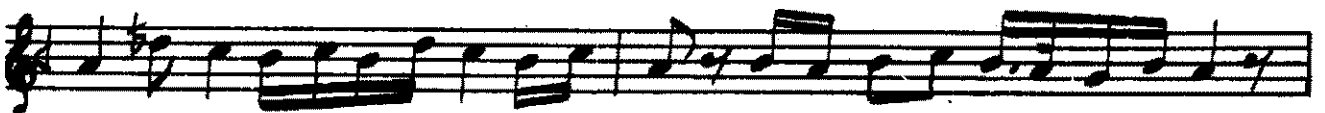


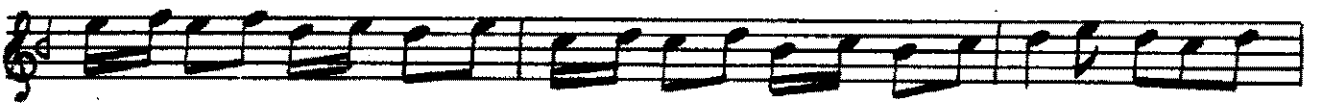
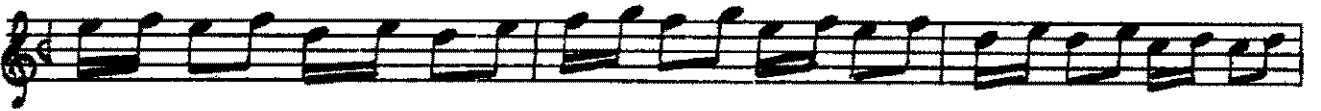
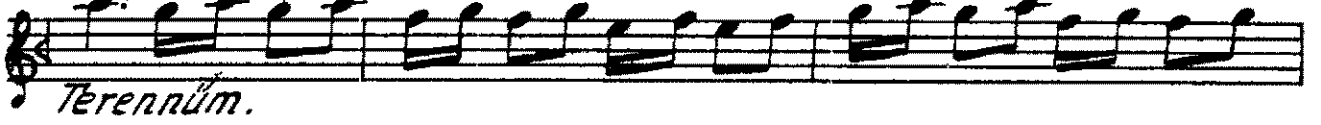
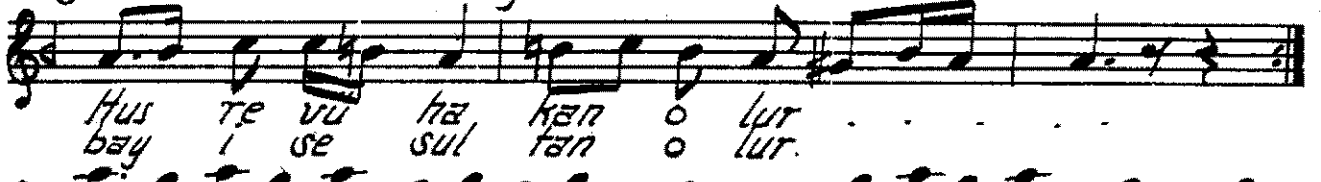
ki o . . . hur . şı . . . di . . . es ra . res . .



tû . Al la . mül . . . gu yub a med

Terennüm.





ten di zi şem sel hak ki Teb ri zi ç i di did güf

tim kez an nür . be ma in na zar üf

tad yā ri men yār ah yā ri men yār

yār . . . yār . . . yār yār yā ri men

yā ri me ra ah yā ri men yā ri me ra

doş yā ri men vay Be hak ki an ki de rin dil

be cuz ve lā yi tū nist Ve li i o ne şevem kû

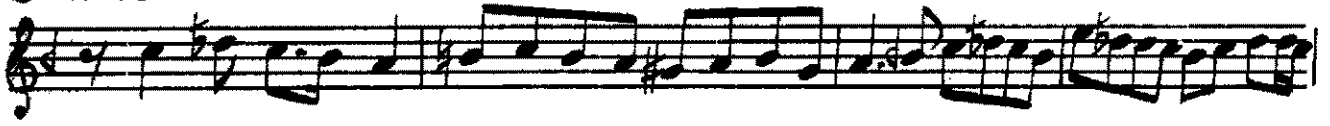
zi ey . . li ya yi yi tū nist Me bād ca

nembi . . gam e ger fe da yi tū nist me bād . çeş

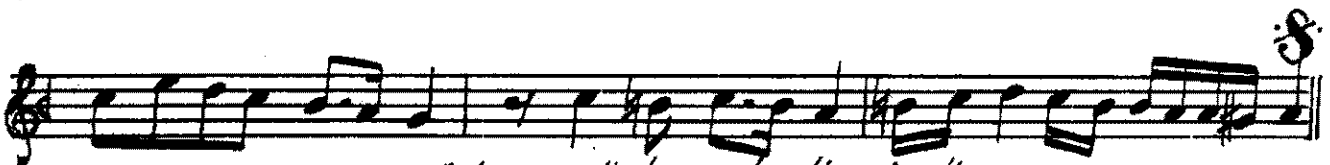
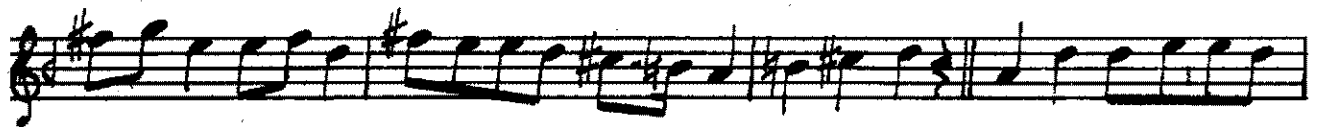
memtû . . şen e ger . . ş i fa yi tū nist
Terennûm.



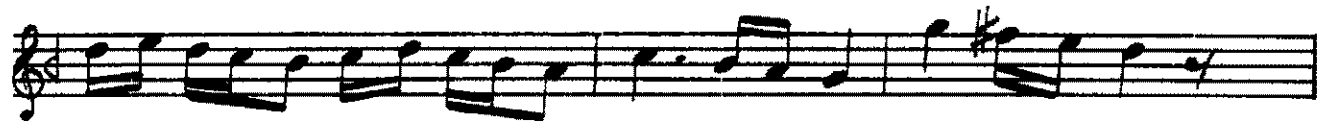
3. Hane.



4. Hane.



Nöt: 3. cü hane teslimsizdir.



Dördüncü Selâm.

Evfer.

Alz Alz sul der tā men ni bi meri de mi
ni mi sul men tā zin de se ni vem
Alz Alz en yek der can di çi lü can şe ved
can ved sad ca ni meri
Alz i ma ni me ni

Çahirbuselik Lon Pesrevi, Rıza Efendi

1 2



Çon yürük Semâi.

