

MÜSTEAR PEŞREVI

Devr-i kebir

The image displays a musical score for a piece titled "MÜSTEAR PEŞREVI" in the "Devr-i kebir" mode. The score is written on 11 staves of music. The first staff begins with a treble clef, a key signature of one sharp (F#), and a 2/4 time signature. The notation consists of eighth and sixteenth notes, often beamed together, with various accidentals (sharps and naturals) indicating the specific pitches. The melody is characteristic of the "Müstear" style, featuring a mix of quarter and eighth notes. The second staff is labeled "2. Hane." and continues the melodic line. The remaining staves follow the same notation style, showing a complex and rhythmic melodic progression. The score is presented in a clear, black-and-white format, typical of a printed musical manuscript.

A - tes ne ze ned derdi li ma  
Kü - telt ne kü ned menzi li ma

il lā hu yā ri hey hūn kā ri men  
il lā hu yā ri hey hūn kā ri men

ger. ā le mi yan . . cūm le ta bi

ban bā . . şed yā ri hey hūn kā ri men

hal . li . . ne kü ned . . mūs ki . . li ma . .

il lā hu yā ri hey hūn kā ri men

he yi hey . yā ri men . . he yi hey . . mi ri men

yar . . . yār . . . yar yü re ğim . yār . .

yar yü re ğim del ci ge rim gör ki ne ler var

im . tu zi han . . . da ni mü hoş . .

kā ni bakt i han . . . da ni mi . . . re şed

sul . tā ni sul . . . tā na ni me . . .

e zi su yi mey . . . dan . mi . . . re sed Ah

ik . ba . . li a . . . . . ba . dan . sü de

des . ta ni dil . . . . . vi ran sü de

pür . sa nü cu . . . . . yan mi re vem . . . . .

an . su . . ki sul . . . . . ten . mi . . . . . re sed

Rür nür me şev . . . . . cün a sü man

ser seb zi şev . . . . . cün bus . . . . . ten

Şev a şî na . . . . . cün ma hi yan

kân bah ri um . . . . . man mi re sed .

Mut ri ba es ta ri ma ra baz gû . . . hey yâr .

he . yi dost kis sa hâ yi can fe za ra baz . gû . .

hey yâr . . . . . he yi dost Mah ze ni in na fe tah na

ber kü şa . . . hey yâr. hey yi dost sir rî cā nî

Mus ta fa ra baz. gu . . . hey yâr . . . hey yi dost

hey mah bu bi men . . . hey mer gu bi men

hey mah lu bi men. hey hey. yâr . . . yâr. ey. mak buli men

## İkinci Selâm

*Exfer.*

Ah Ah sul tã ni meni  
der men bi de mi

ni sul tã ni me ni  
mi men zin de şe vem

ah en der di lü can  
ah yek can çî şe ved

can ved i ma ni meni  
ved sad ca ni me ni

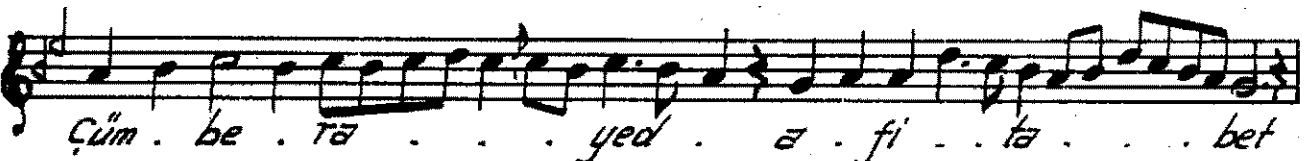
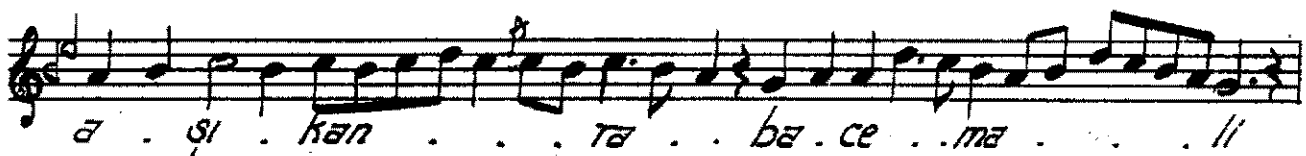
ah i ma ni meni

*Terennüm.*

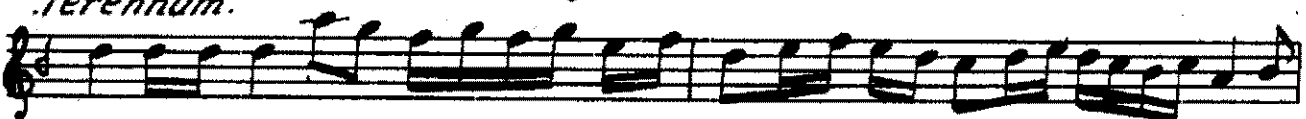


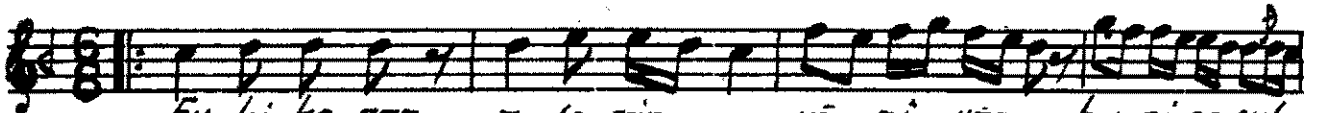
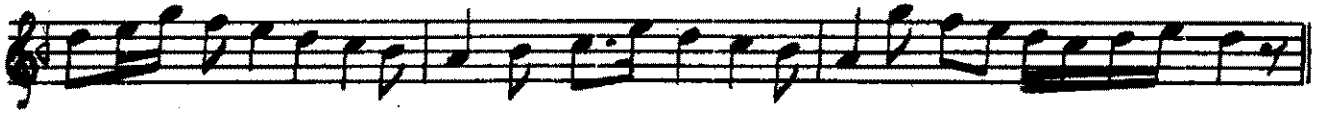
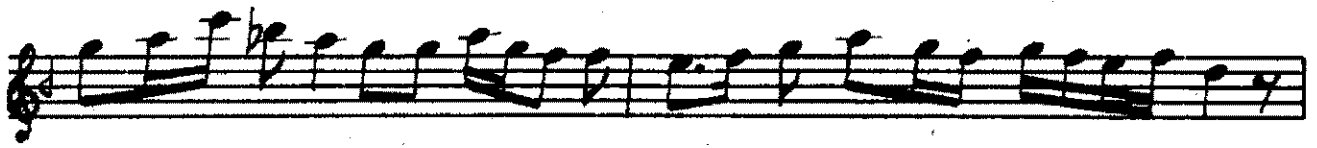
# "Heineci Selam"

Evsat.

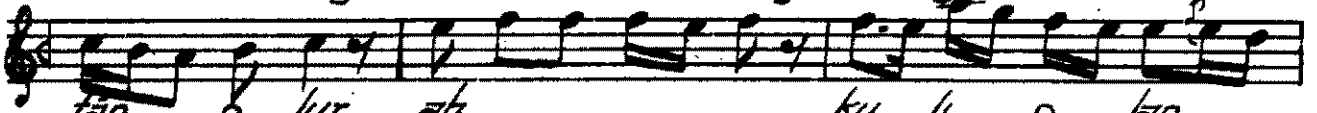


Terennüm.

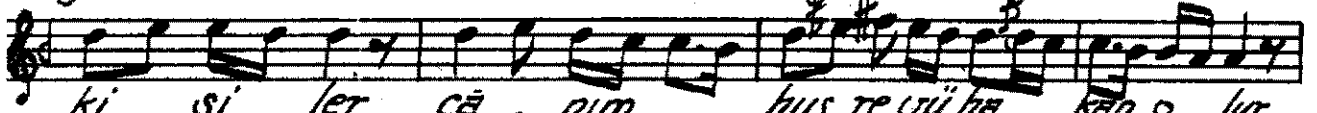




Fu ki he zar a je rin . . . yā ri yār . bu ni ce sul  
 Het ki bu gün ve le de . . . yā ri yār i na ru ben



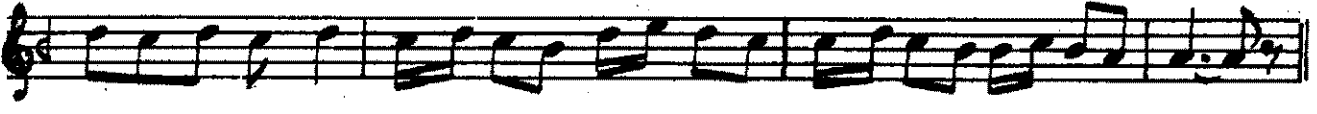
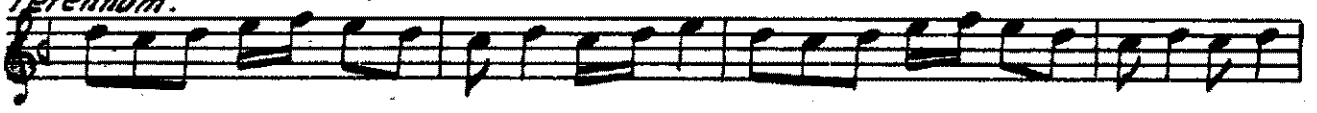
tān. lür ah . . . ku li o ken  
 yüz sü re ah . . . yok sul i se



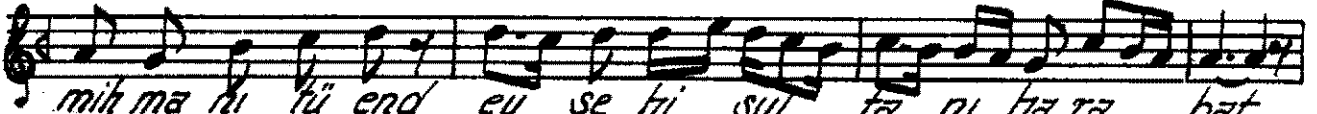
ki si ler cā . nim . . . hus re vü ha kan o lür  
 bay o lür cā nim . bay i se sul tān o lür.



dost . . . hus re vü ha kan o lür  
 dost bay i se sul tān o lür



Ez ev ve lü im rü zi ha ri fa ri ha ra bat



mih ma ri kü end ey se hi sul ta ni ha ra bat



Im ruz ci rü zes ti bi gü rü zi se a det

Uinkible i dil cist bi gū cā ni hā rā bat yā ri men yār

ah yā ri men yār yār . . . yār . . . . .

yār . . . yā ri men vāy yār yā ri men

yā ri me rā . . . ah yā ri men yā ri me rā dost yā ri men

yā ri me rā ah yā ri men vāy

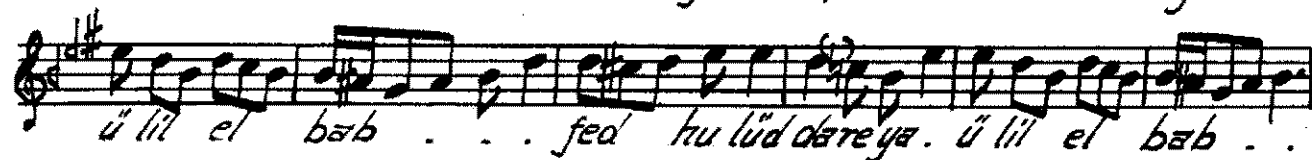
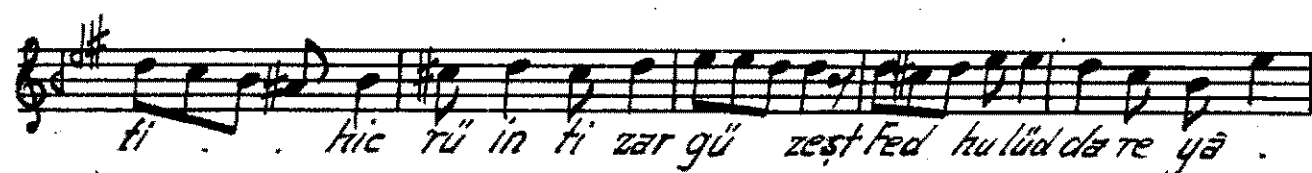
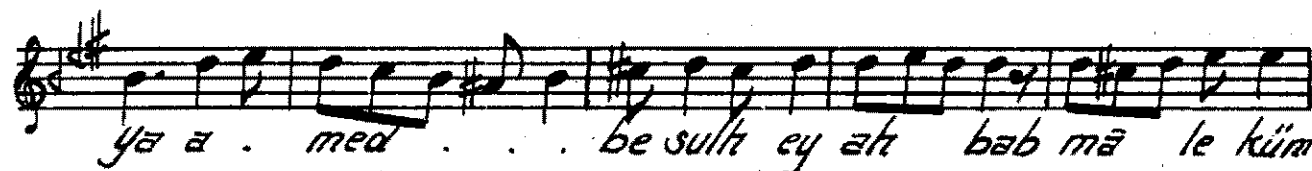
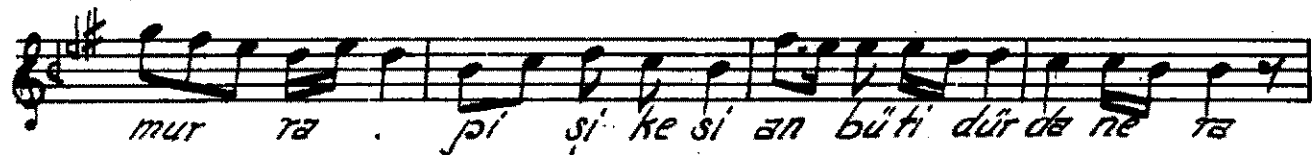
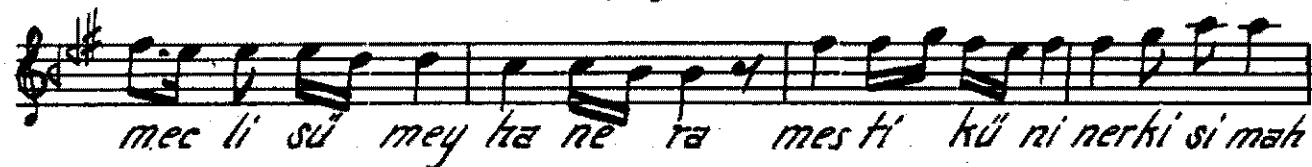
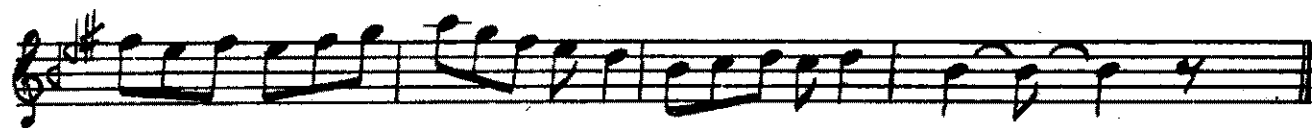
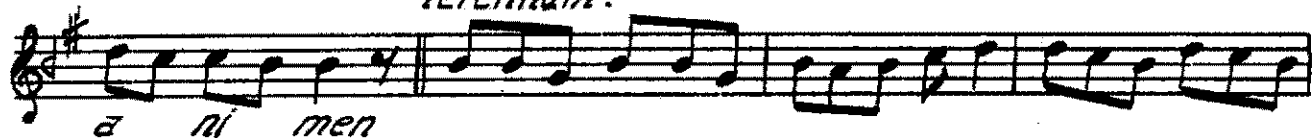
Terennūm.

Banki' be rā med zi di lū cā ni men kā hi zi mā'

ṣu kā i pin hā ni men gūft te mū kurba nī ki yem

yār gūft . . . a ni me ni . . . a ni me ni

*Terennüm.*





# Dördüncü Selâm.

Eyfer.

Alz Alz sul der tā men ni bi meri de mi  
ni mi sul men tā zin de se ni vem  
ah ah en yek der can di ci lü can se ved  
can ved i sad ma ni ni me ni me ni  
Alz i ma ni ni me ni

## Çon Pesrey Tamburi Hızır Ağā

Düyek.

yalnız bir saz tarafından.

