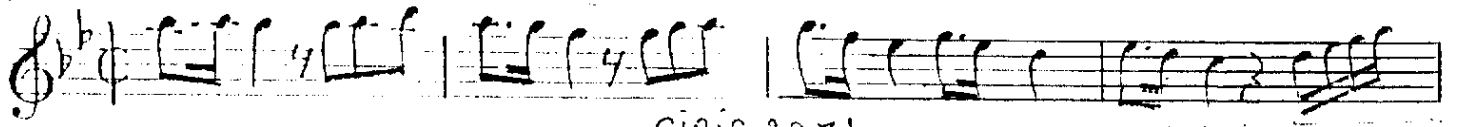


Sofyan  
3:25"

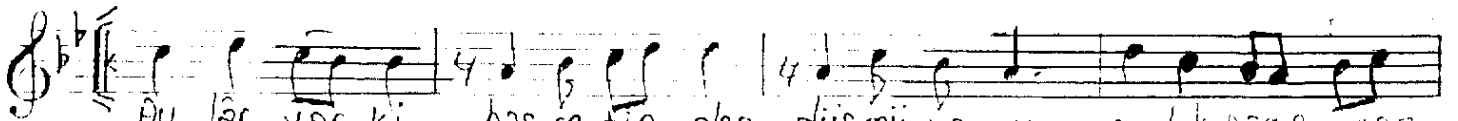
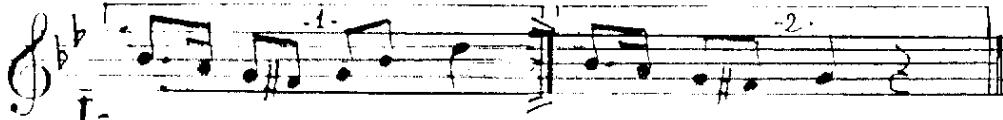
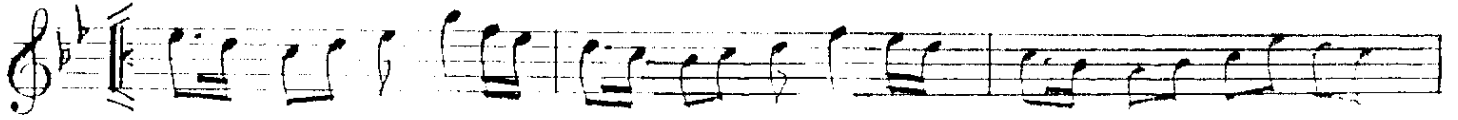
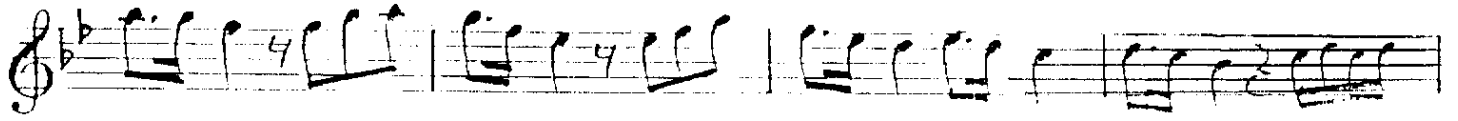
NİHAVENT SÖPKİ  
Ay-lar var ki has-re-tin den  
= PABUCUNU OTTIM DAMA:

Musik: Alâeddin Sofyan  
Söz: Necâti Fikri-âhî

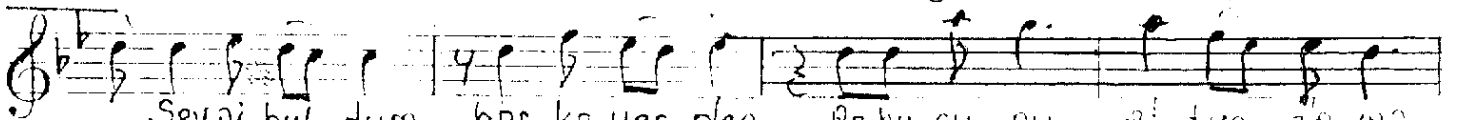
(1) 12.6



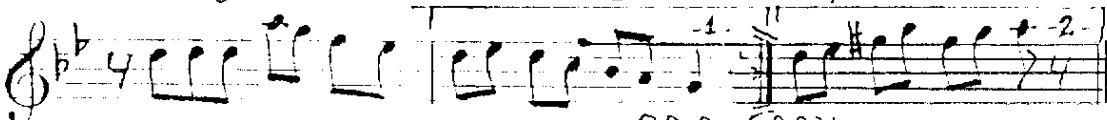
GİRİŞ SÖZİ



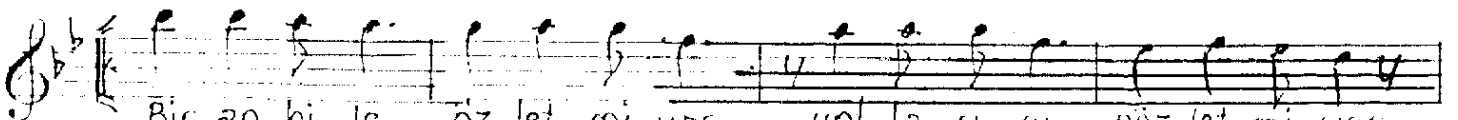
Ay-lar var ki has-re-tin den düş-mü-yo-rum ar-tık game-sar...



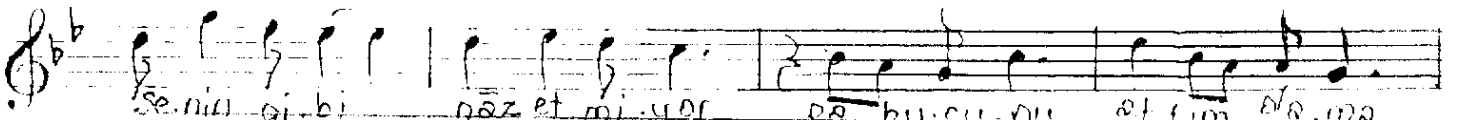
Sev-gi bul-dum baş ka-yer-den pa-bu-cu-nu ot-tım da-ma



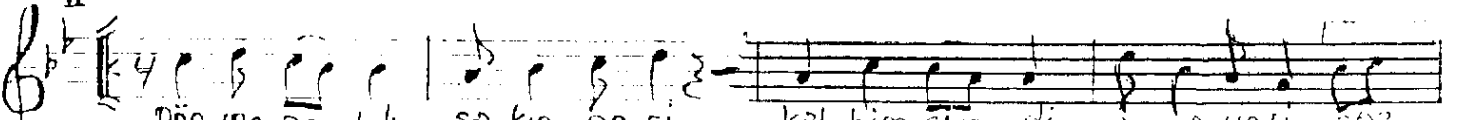
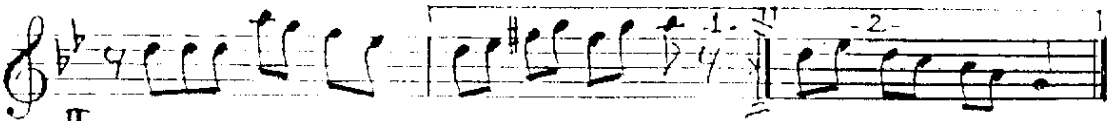
ARA SÖZİ



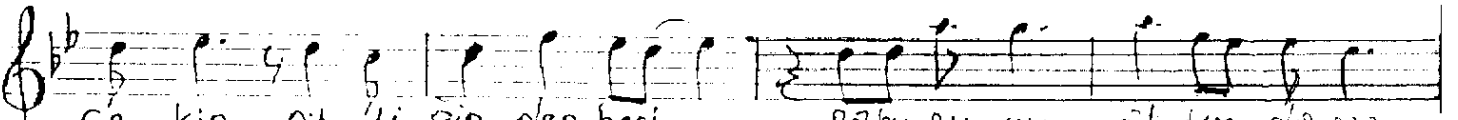
Bir an bi-le öz-let-mi-yor yol-la-rı-mı göz-let-mi-yor



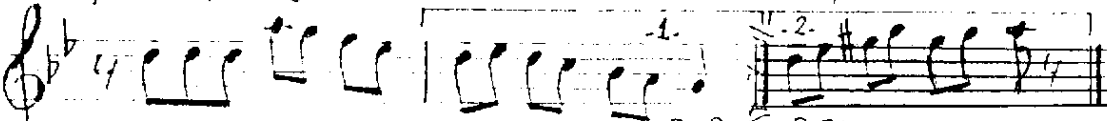
Se-ni gi-bi nâ-z et mi-yor pa-bu-cu-nu ot-tım da-ma



Dön-me ar-tık sa-kin ge-ri kal-bim sim-di a-ma-yo-lu-ğuz...



Çe-kip git-ti-gin-den beri pa-bu-cu-nu ot-tım da-ma



ARA SÖZİ

Sâhipe: -2-

A musical score for the song 'Sâhipe: -2-'. It consists of three staves of music in a 4/4 time signature, with a key signature of one flat (B-flat). The lyrics are written below the notes. The first staff contains the lyrics: 'Aşk ol. mazsa ol. maz gâ. ye Hep ken. di. ne verdin pâ. ye'. The second staff contains: 'çok. fan bit. ti buhi. kâ. ye Pa. bu. cu. nu at. tım da. ma'. The third staff contains: 'ARA SAZI' followed by 'Pa. bu. cu. nu at. tım da. ma'. The word 'SON' is written at the end of the third staff.

I

Aylar varki hasretinden;  
Düşmüyordum artık gâma.  
Sevgi buldum başka yerden  
Pabucunu attım dama.  
Bir an bile özletmiyor.  
Yollarını gözletmiyor.  
Senin gibi nazetmiyor.  
Pabucunu attım gâma.

II

Dönme artık sakin geri.  
Kalbim, şimdi onun yeri.  
Çekip gittiğinden beri;  
Pabucunu attım dama.  
Aşk olmazsa olmaz gâye.  
Hep kendine verdin pâyeye.  
Çoktan bitti bu hikâye  
Pabucunu attım dama.

Necâti Dilsizoglu