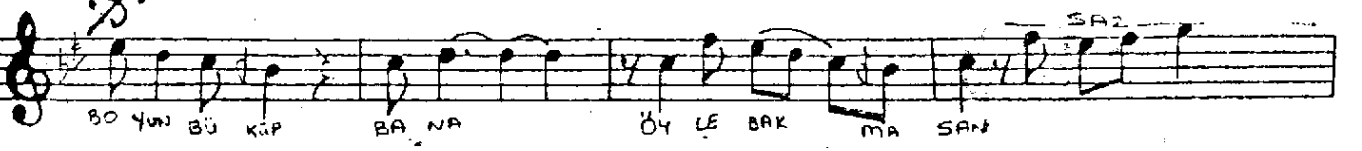
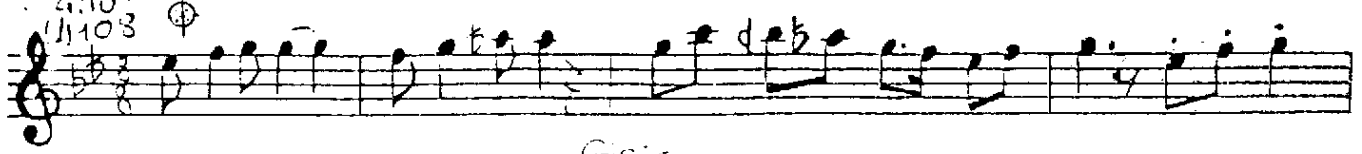


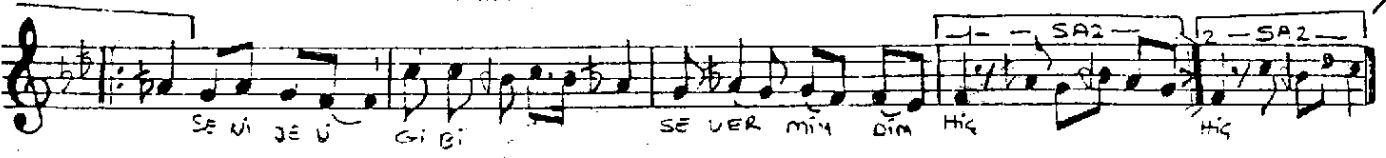
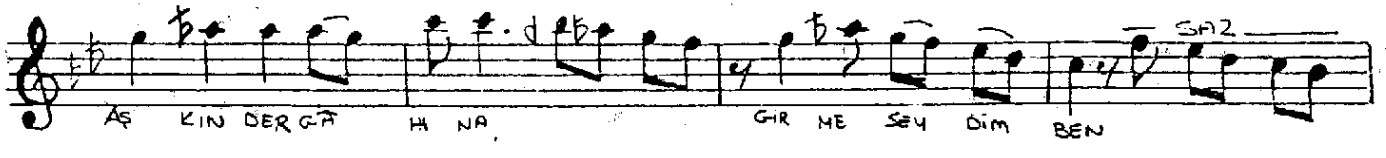
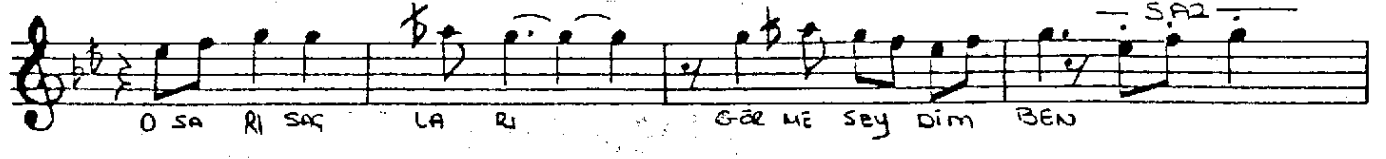
ŞEVK-EPZA ŞARKI
UZAYAN YOLLARI GÖZÜM KESMESE

BESTE: ALAEDDİN ŞENSOY
GÜPTE: AHMET KARAKAYA

DÜYEK

2/110
11103





BER. AS-

UZAYAN YOLLARI GÖZÜM KESMESE,
PEŞİNDEN KOŞUPTA GELİRMİYDİM HİÇ?
BAŞIMDA BU KAVAK YELİ ESMESE
SENİ DELİ GİBİ SEVERMİYDİM HİÇ?

BOYUN BÜKÜP BANA ÖYLE BAKMASAN
ŞU KIRIK KALBİME BÖYLE AKMA SAN
KOR OLMUŞ BAĞRIMI BİRDE YAKMASAN
SENİ DELİ GİBİ SEVERMİYDİM HİÇ?

O SARI SAÇLARI GÖRMESEYDİM BEN
AŞKIN DERGÂHINA GİRMESEYDİM BEN
KARA SEVDÂ NEDİR, BİLMESEYDİM BEN
SENİ DELİ GİBİ SEVERMİYDİM HİÇ?