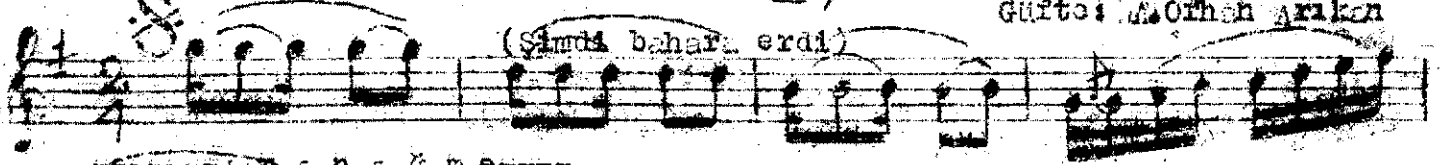


Nin Sofyan

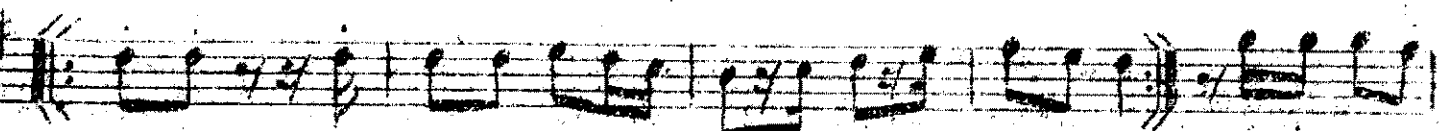
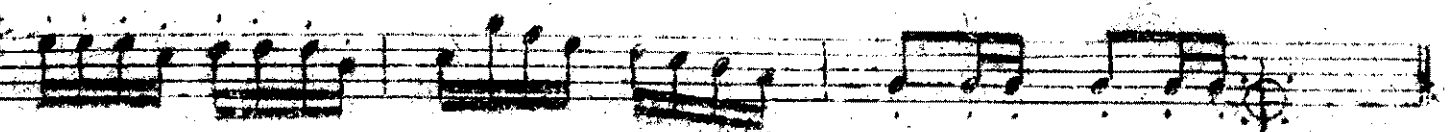
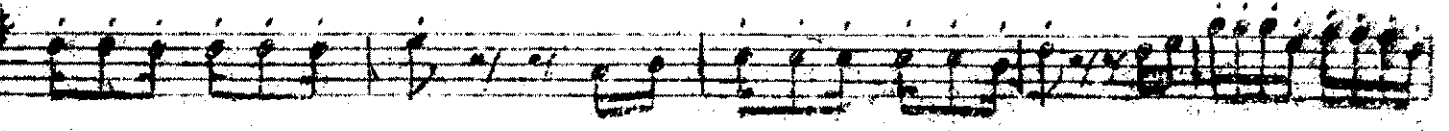
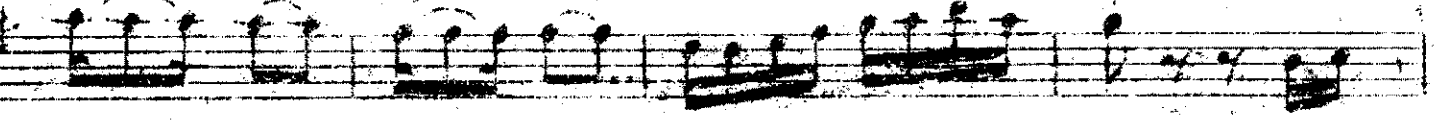
MAHUR SARKI

Besteci: Dr. Alâeddin Yavaşo
Güfteci: M. Orhan Arıkan

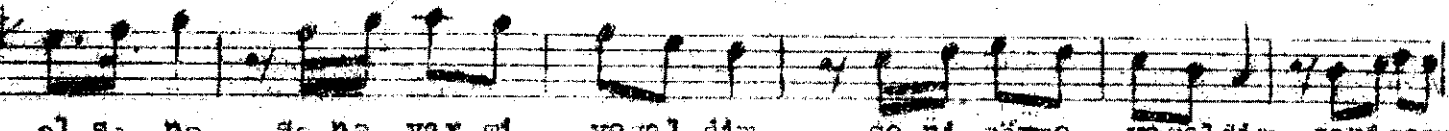
(Şimdi bahara erdi)



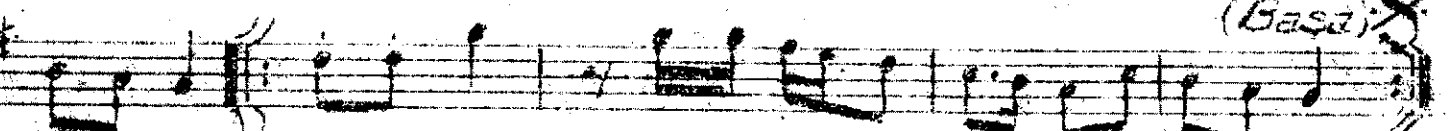
Ş a n a ğ n e



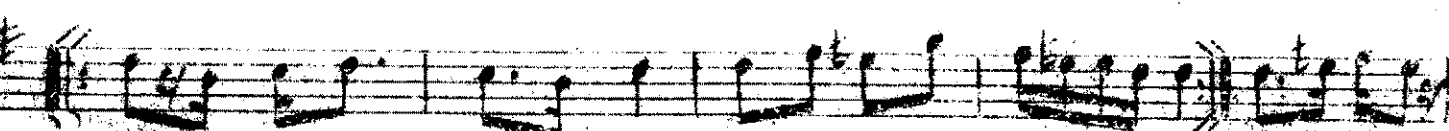
Şimdi ba hara er dim gon oa gon oa gülder dim U za nı pda



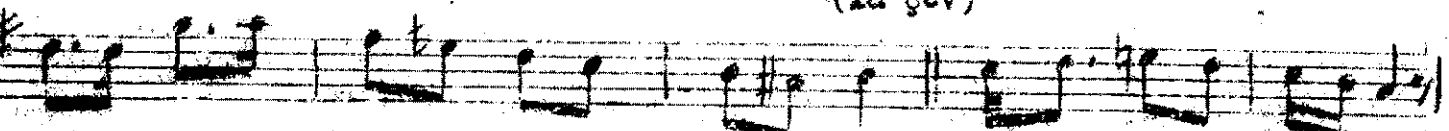
al sa na sa na ver mi yegel dim so ni görme yegeldim seni sevme



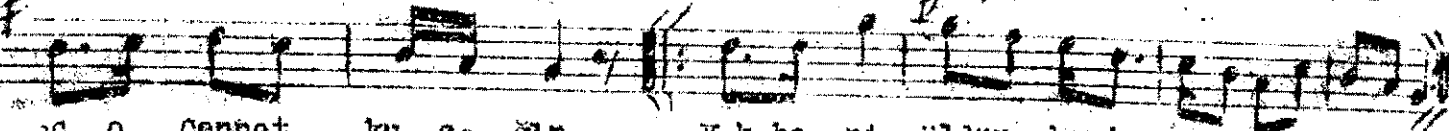
yegel dim O renk li du da ğ an d n birkezöp ne yegel dim



Yan ğ ön lüne yan do din aş kın ı ş kat ro lon din Haydi beni
(la gev)



sarsa na bak iş to di ze gel dim zat gülgün a d a ğ in



aç o Cennet ku ca ğ an Yak be ni öldür beni canım vov

Şimdi bahara erdim gonca gonca gül dordim
Uzanıpda alsana sana vermeye geldim
Seni görmeye geldim seni sovmeye geldim
O renkli dudagından bir kez öpmeye geldim
Yan gönüne yan dedim aşkınla çevrelendi
Haydi beni sarsana bak işte diye geldim
Uzat gülgün dudaktan aç o Cennet kucağın
Yak beni öldür beni canım vermeye geldim.