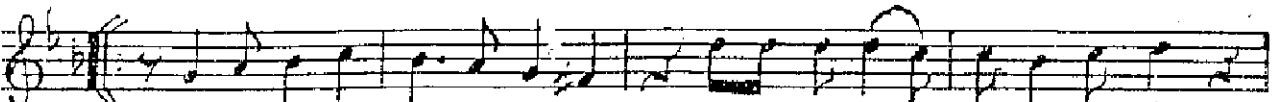
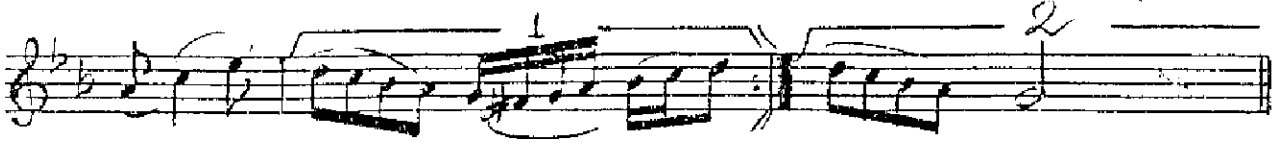
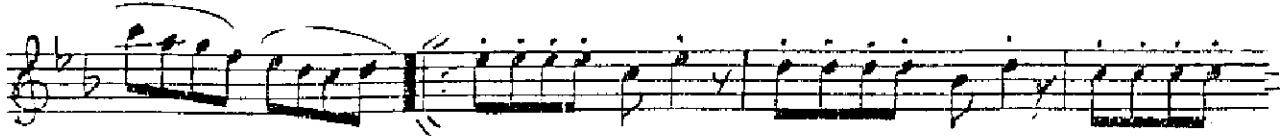


NIHAVEND FANTEZİ

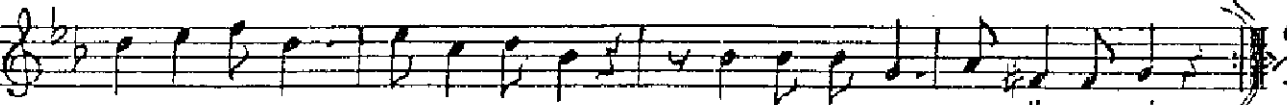
Beste: Alâeddin Yavaşca

Güfte: İlkan Sarı

DÜYEK $\text{♩} = 124$
ARANÇME



AŞ-KI BİL-MEK İS-Tİ-YOR-SAN SE-VE-NE SOR-DA SÖY-LE-SİN



MİZ-RAP O-NUN A-NAH-TA-RI TEL-LE-RE SOR-DA SÖY-LE-SİN



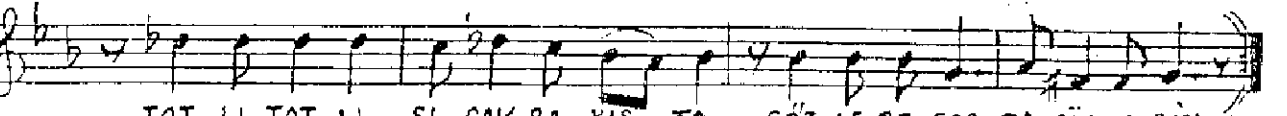
ŞAR-KI TÜR-KÜ O-NU SÖY-LER O-NA İT-HAF BÜ-TÜN GÜL-LER



AĞ-LAT-SA-DA GÖ-NÜL EY-LER TEL-LE-RE SOR-DA SÖY-LE-SİN



KÜ-ÇÜ-CÜK BİR Ö-PÜ-CÜK-TE ŞEF-KAT İ-LE OK-ŞA-YIŞ-TA



TAT-LI TAT-LI SI-CAK BA-KIŞ-TA GÖZ-LE-RE SOR-DA SÖY-LE-SİN



Kİ-Mİ YA-ZAR Kİ-Mİ Çİ-ZER Kİ-Mİ MEC-NÜN Gİ-Bİ GE-ZER



A-RİF O-LAN AN-LAR SE-ZER DOST-LA-RA SOR-DA SÖY-LE-SİN

Beste Târîhi: 6. VIII. 1994 - Pınarhisar - İstanbul.