

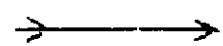
NIHAVEND ŞARKI

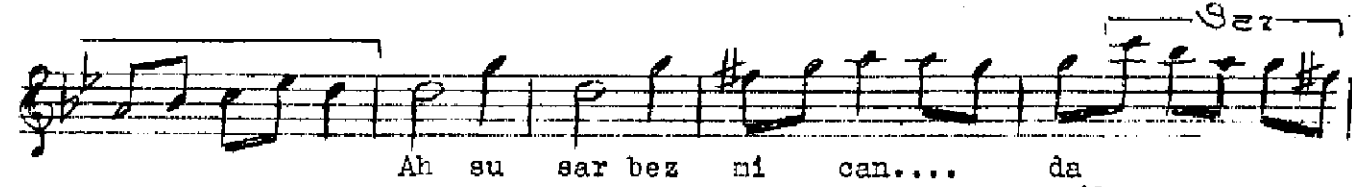
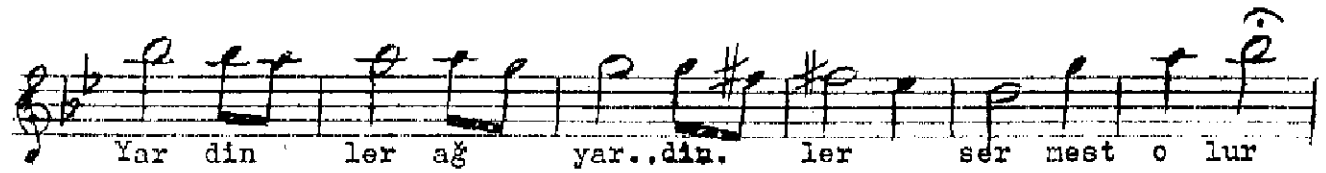
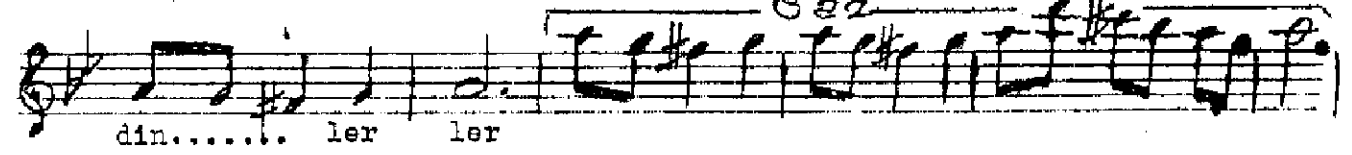
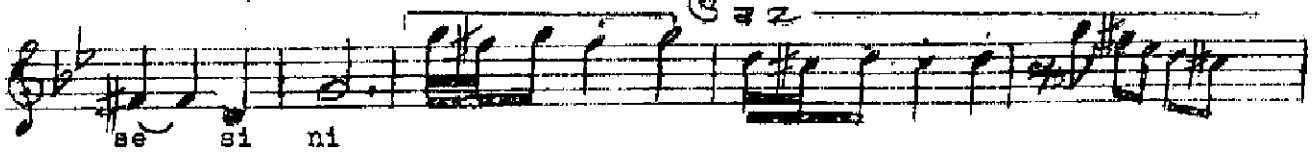
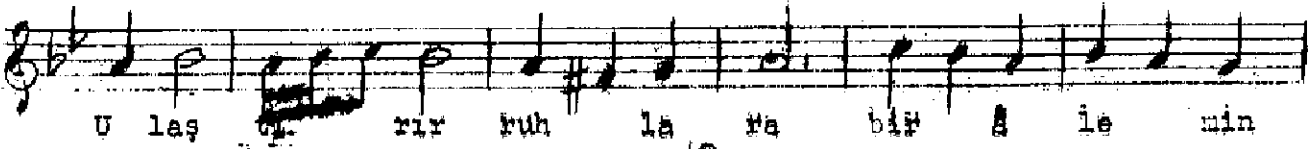
Beste: Dr. Alâeddin Yavaşca  
Güfte: Orhan Tokmakoglu

Semâi

( Aranağmesi )

Fu sün ser..... pen sa ..... zi nin.... din... le  
sen..... nağ ne..... si ni ----SAZ----  
----SAZ----  
U laş ti rir ruh... la  
ra bir... â le nin se... si ni





Füsûn serpen sâzının dinlesen nağmesini  
 Ulaştırır ruhlara bir âlemin sesini  
 Lâl olur bütün diller vecd içinde dinlerler  
 Yar dinler ağyar dinler sermest olur gönüller  
 Ah susar bezm-i canda, can dinler cânân dinler.