

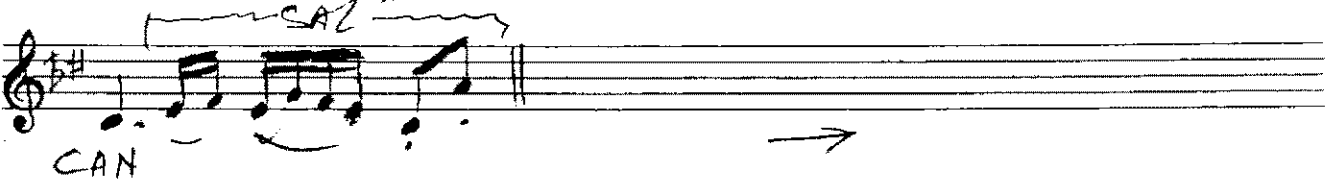
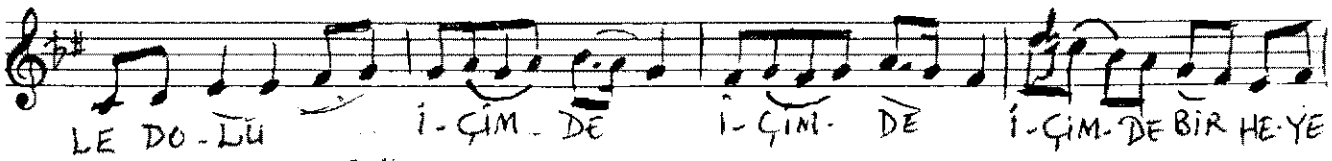
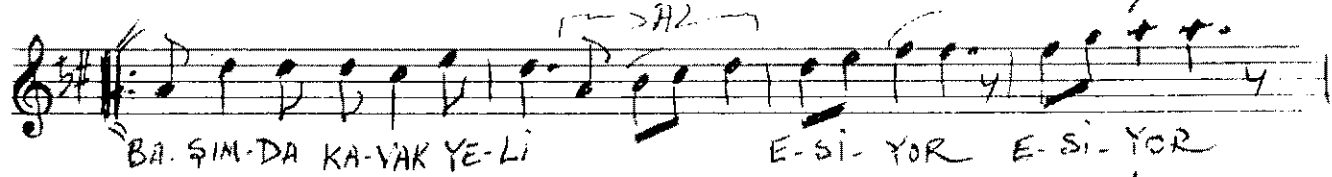
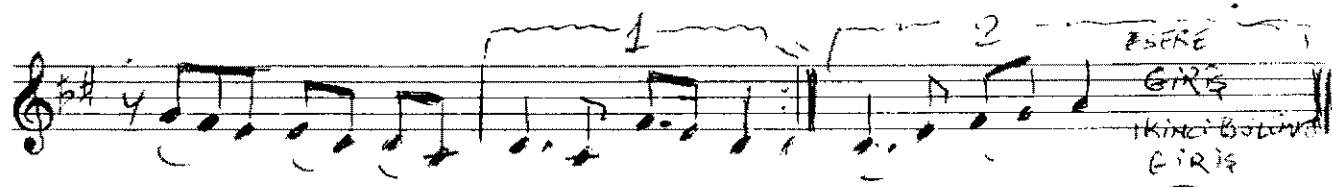
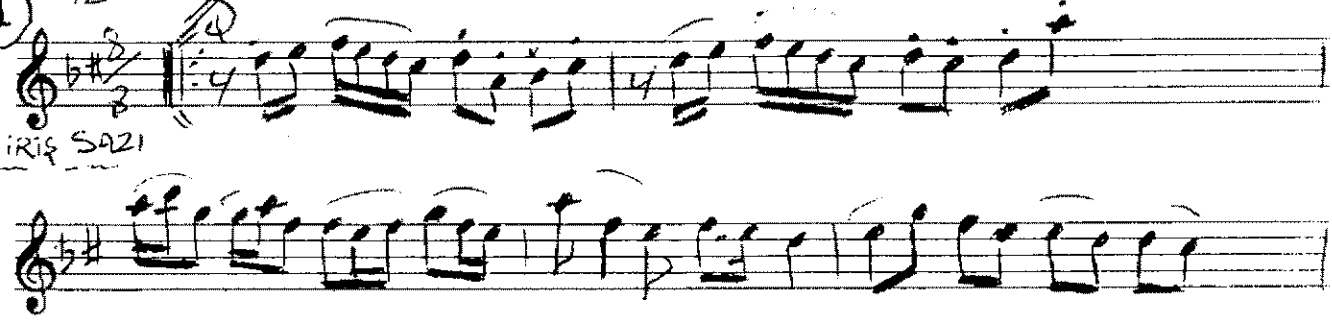
SULTANİ YEGÂH

Beste: ALÂEDDİN YAVUŞCA
Güfte: HÜSÂMETTİN OLGUN
Beste tarihi: 23/06/2002 - BURDUR

Düyek/Semâi (♩ = 70)
♩ = 120

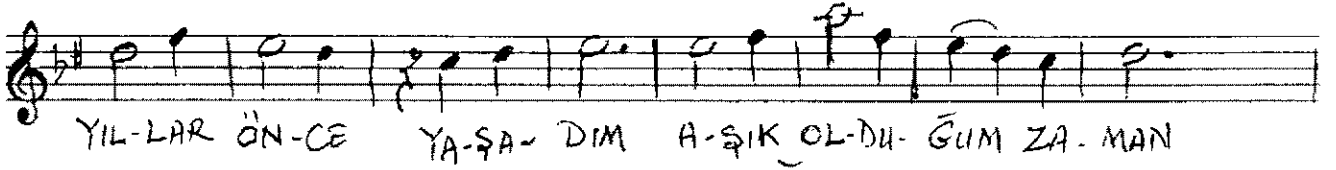
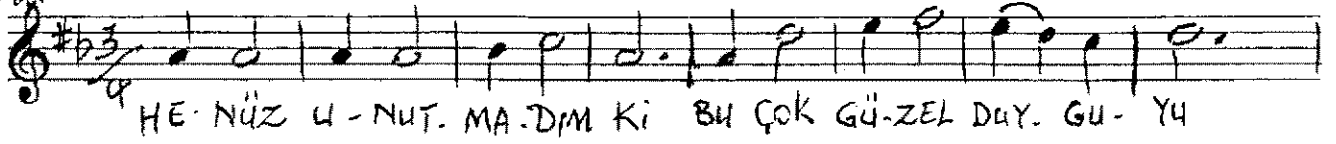
ŞARKI

GİRİŞ SAZI

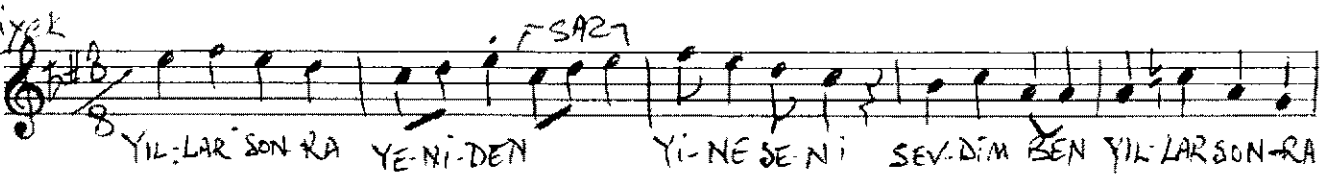


(2)

Şemâî 1=40



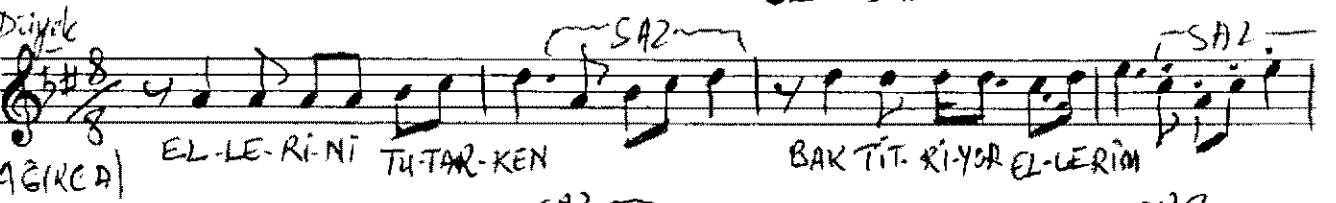
Düyek



Bastaki Anarınize

(2)

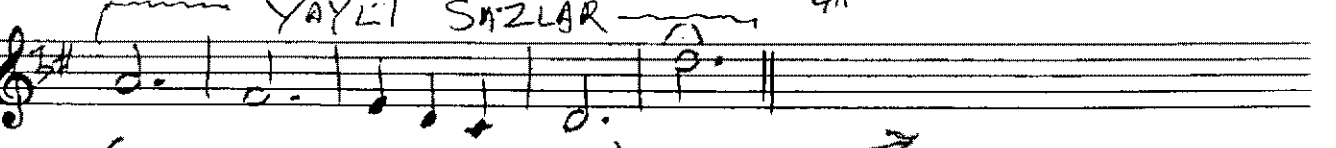
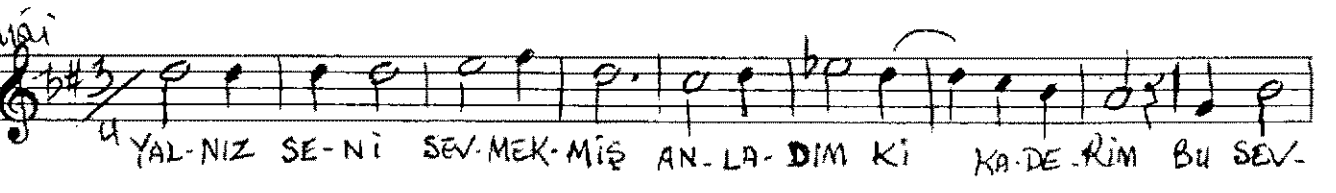
Düyek



(AĞIRCA)



Şemâî



(BİR MERTEBE AĞIR TEMPO'DA)



Düyet

f SAZ →

(P.P.) YIL LAR SON-RA YE-Nİ-DEN Yi-NE SE-Nİ SEV-DİM BEN

f SAZ →

YIL-LAR SON-RA YE-Nİ-DEN SA-NA A-ŞIK OL-DUM BEN, SON

((AĞIR TEMPODA))