

DİLKÜŞÂ* PEŞREV

USUL: ÇEMBER

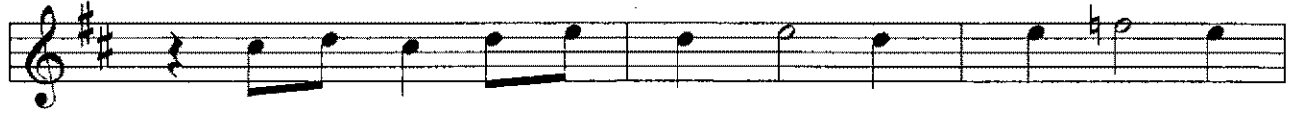
BESTE: ARİF MEHMED AĞA

1.HANE

The musical score for the first hane of the Dilküşâ Peşrev is presented in eight staves. The key signature is two sharps (D major) and the time signature is 2/4. The notation includes various rhythmic values, accidentals, and phrasing marks.

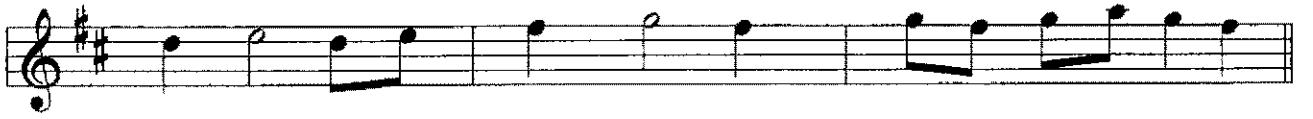
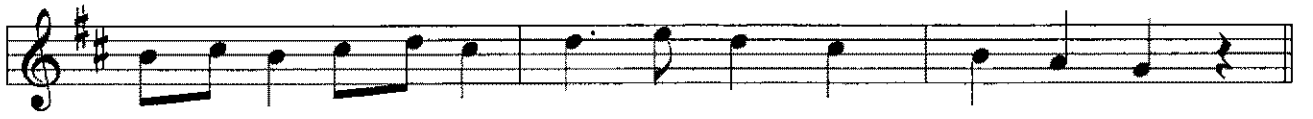
* Dilküşâ kelimesi Dilküşâ olarak söylenmektedir.

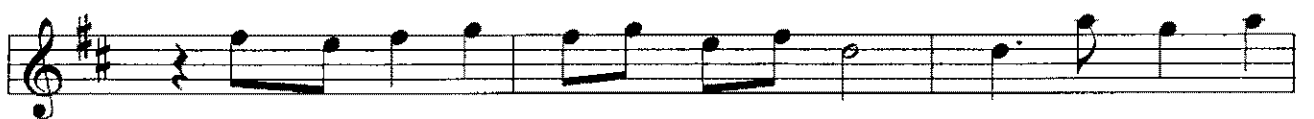
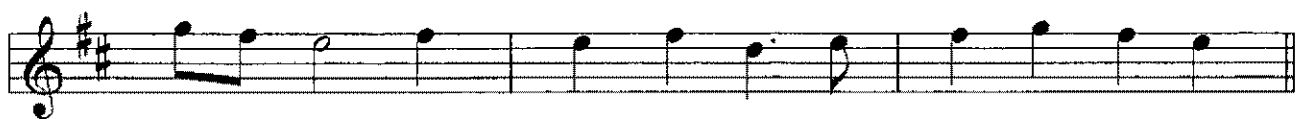
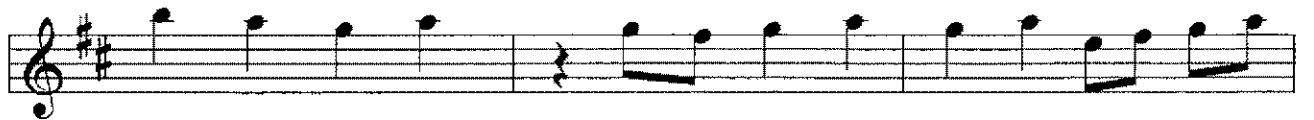
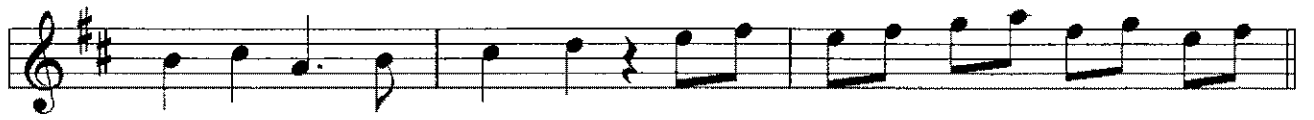
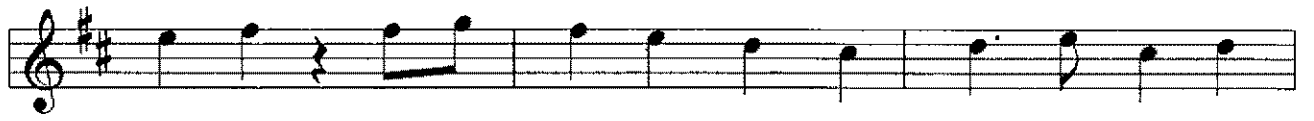
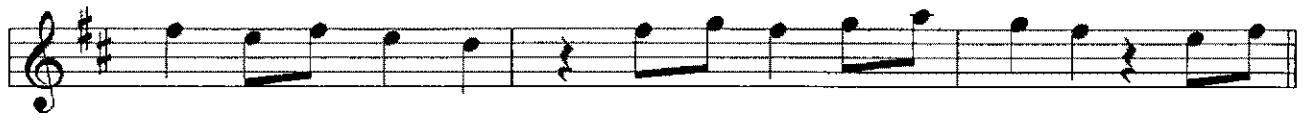
MÜLAZİME 8



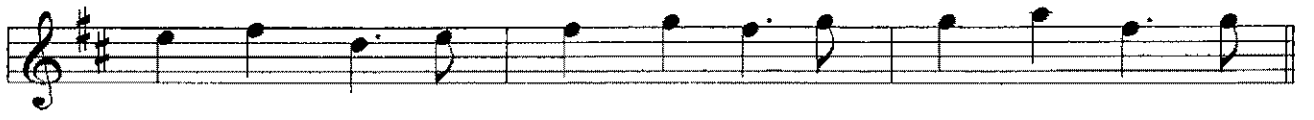
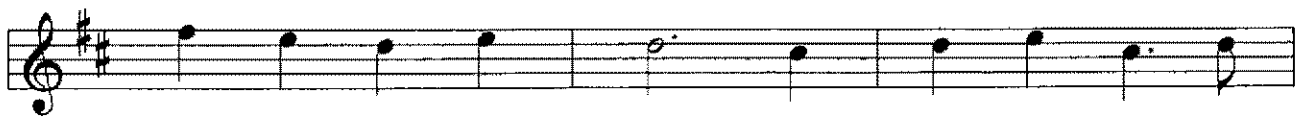
SON

2.HANE





3. HANE





4.HANE

