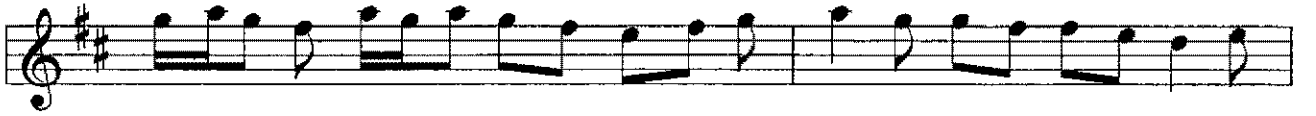


DİLKÜŞÂ* SAZ SEMÂİSİ

USUL: AKSAK SEMÂİ

BESTE: ARİF MEHMED AĞA

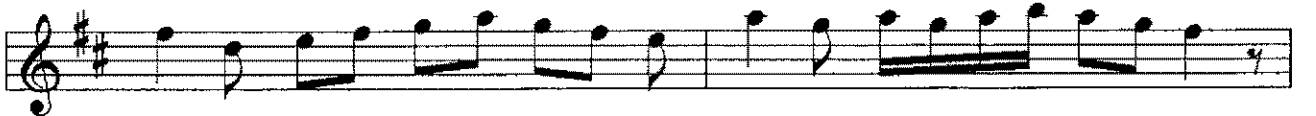
1.HANE



MÜLAZİME §



2.HANE



* Dİlgüşâ kelimesi Dİlküşâ olarak söylenmektedir.

3.HANE

The musical notation for '3.HANE' consists of four staves. The first staff begins with a treble clef, a key signature of two sharps (F# and C#), and a common time signature. The melody is composed of eighth and sixteenth notes, with some rests. The second and third staves continue the melodic line with similar rhythmic patterns. The fourth staff concludes the piece with a double bar line and a repeat sign.

4.HANE

The musical notation for '4.HANE' consists of four staves. The first staff begins with a treble clef, a key signature of two sharps (F# and C#), and a common time signature. The melody is composed of eighth and sixteenth notes, with some rests. The second and third staves continue the melodic line with similar rhythmic patterns. The fourth staff concludes the piece with a double bar line and a repeat sign.