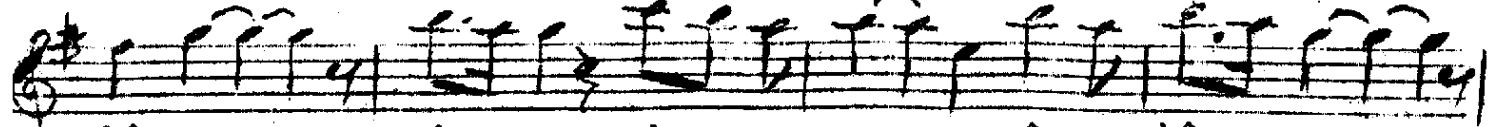
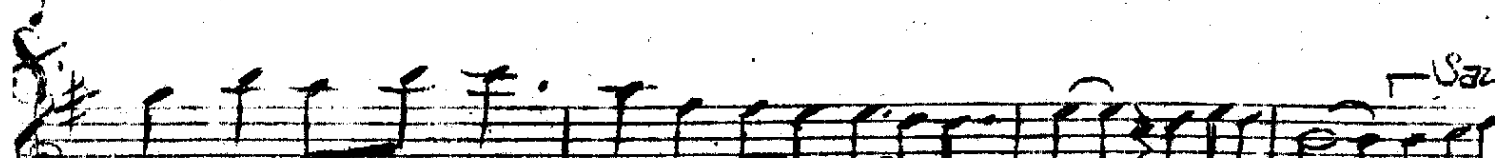
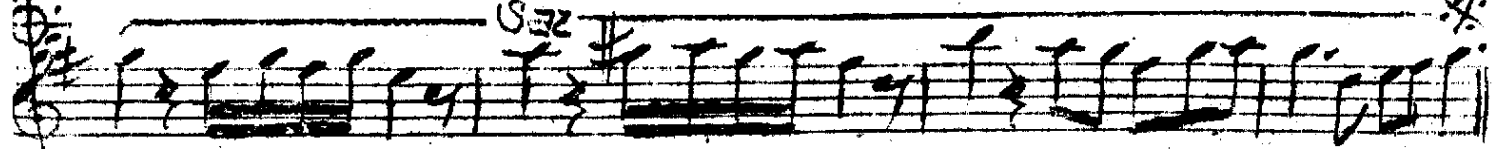


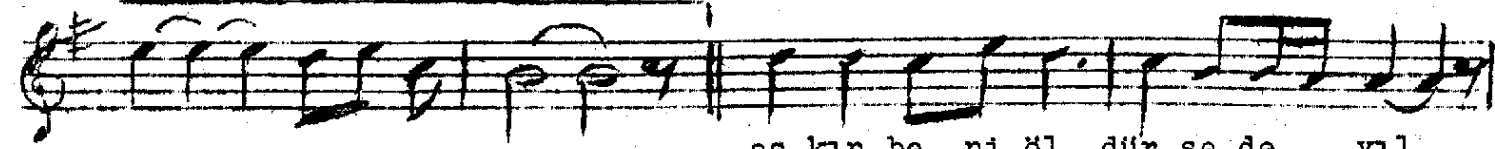
Ben der... di me hiç çare bul mam sâ



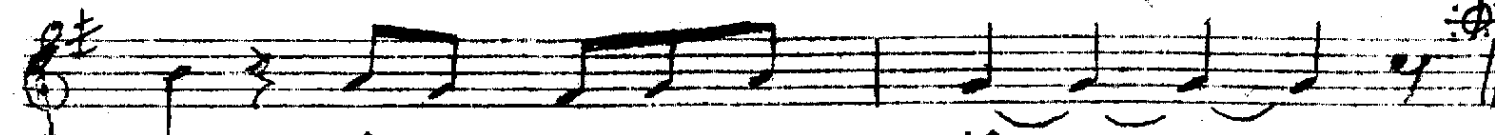
kî ah..... ah..... sâ ... kî



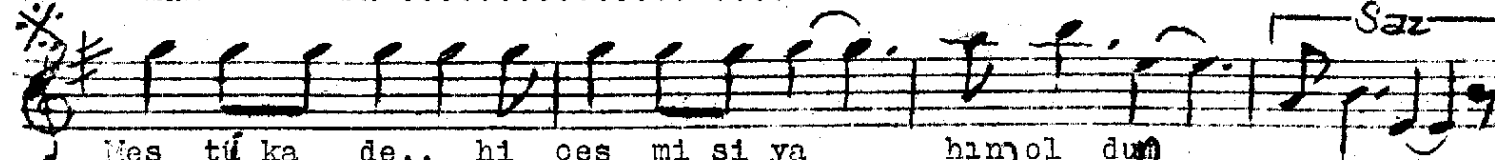
Aş kın be ni öl dür se de yıl... mam sâ kî



aş kın be ni öl dür se de yıl



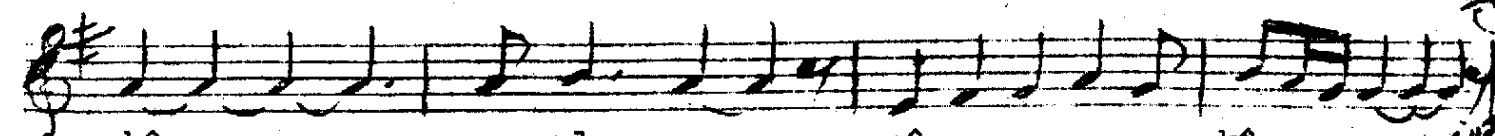
mam sâ kî



Mes tû ka de.. hi çeş mi si ya hın ol dum



Dol sa ka de hi öm rüm a yıl.. mam sâ



kî a yıl mam sâ kî

Ben derdime hiç çare bulmam sâkî -
 Aşkın beni öldürsede yılmam sâkî
 Nestsü kadehi çeşmi siyahın oldum
 Dolşa kadehi ömrüm ayılmam sâkî...