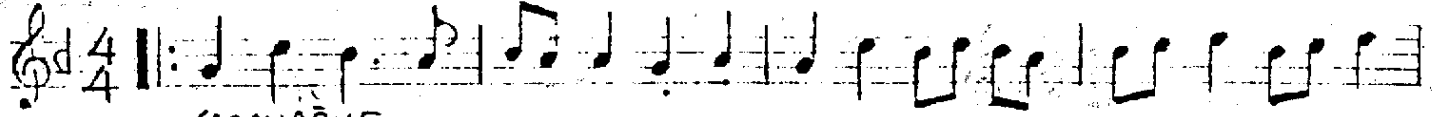


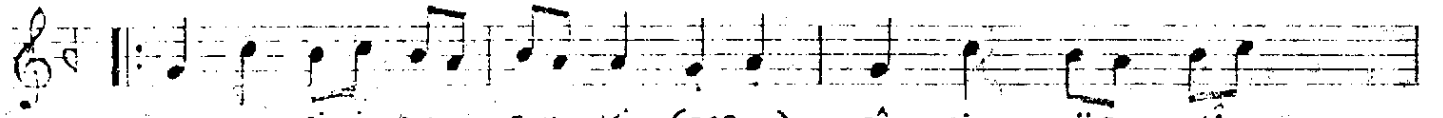
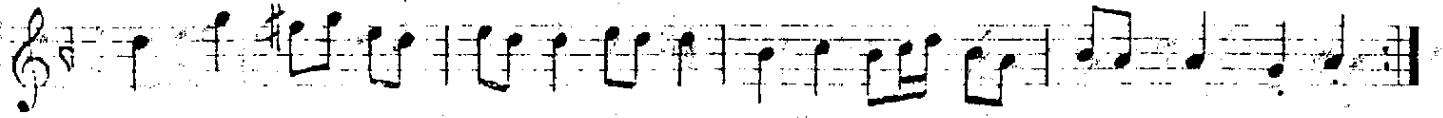
SOFYAN (♩=76)

UŞŞAK-ŞARKI  
(Bu şehri İstanbul ki..)

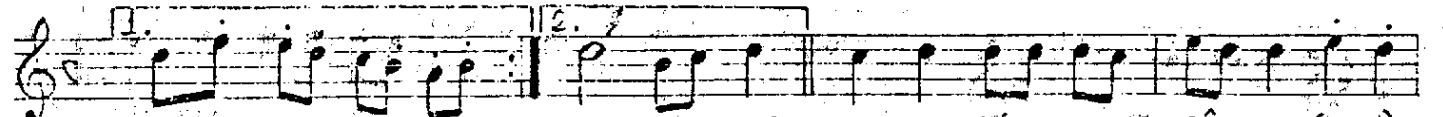
Güfte : NEDİM  
Beste : ÂRİF SÂMİ TOKER



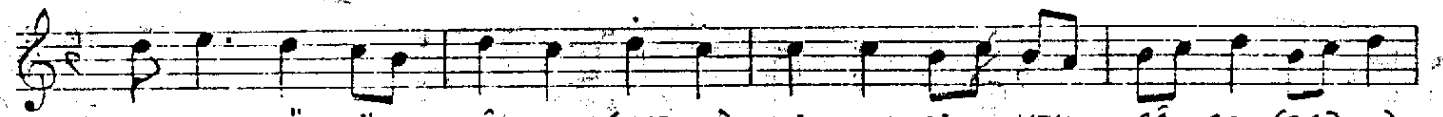
(ARANAĞME.....)



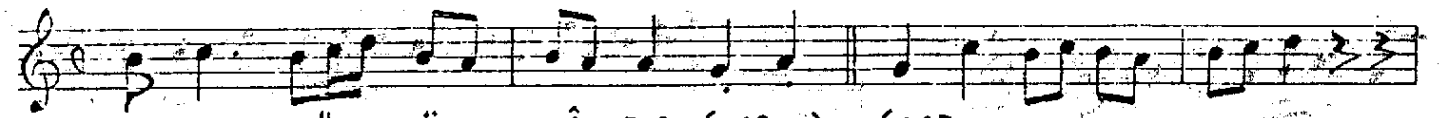
BU ŞEH Rİ Sİ TAN EUL KI (SAZ..) Bİ MİS LÜBA HÂ



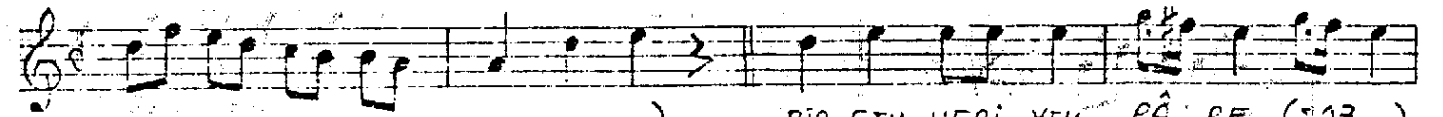
DIR (SAZ.....) DIR (SAZ...) BİR SEN GİNE YEK PÂ RE (SAZ)



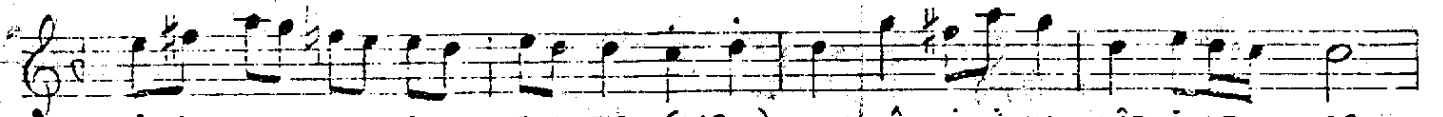
A CEM MÜL KÜFE DÂ DIR (SAZ..) BİR SEN GİNE YEK PÂ RE (SAZ..)



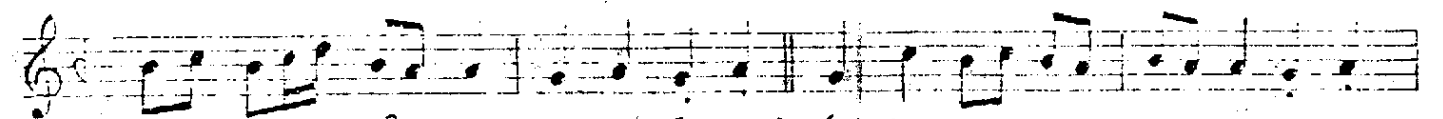
A CEM MÜL KÜFE DÂ DIR (SAZ..) (SAZ.....)



.....) BİR GEN HERİ YEK PÂ RE (SAZ..)



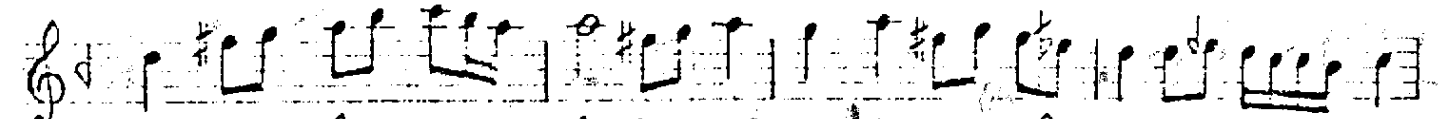
İKİ EÂHR ARA SIN DA (SAZ..) HURŞİ Dİ Cİ LAN TÂB İ LE TAR



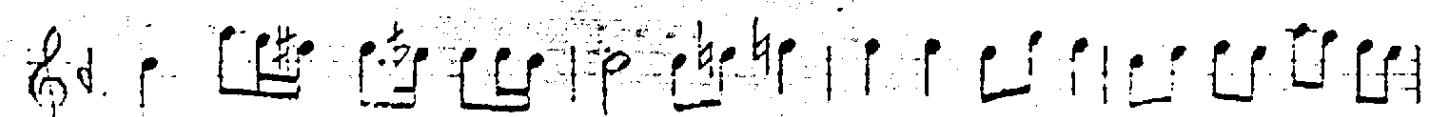
TİL SASE ZÂ ... DIR (SAZ..) (SAZ.....)



.....) AL TIN DAMI ÜS TÜN DENİ DIR



CEN NETİ Â ..... LÂ (SAZ..) EL HÂK BUNE HÂ LET EUNE HÜŞ ...



Â BÜHE VÂ ..... DIR (SAZ..) HİC BÂŞ ŞİŞİ Lİ ŞİŞİ NİS TÂ ...

UŞŞAK ŞARKI (Devamı)

... NİLE TÂ... FET (SAZ...) HER GÜ ŞE'Sİ BİR MECLİSİ PÜR

FEY ZÜSE FÂ... DİR (SAZ..) (ARA SAZI...)

SİMÂT (♩ = 152)

3/4

NÂ MI Gİ Bİ OL.. MUŞ... TUR O HEM

SÂD... HEM... Â... SÂD İS TAN BÜ LA

SER.. MÂ.. YE İ FAH... ROL... SA RE VÂ..

... DİR (SAZ...) KÛH SAR LA RI BAĞ.. LA RI..

KA SIR LA RI... HEP GÛ YÂ.. Kİ BÜ TÛN..

... ŞEV KU TA RAB ZEV KU SA FÂ... DİR

ZEV... KLI SA FÂ... DİR İS TAN BİLİN ZV

SÂ.. Fİ Nİ MÛM LÛN MÛBE YAN... HİÇ (SAZ..) MAK SÛ DİLİE MAN

SAD RI KL FEM KÂ Kİ SE NÂ DİR

SAD RI KL FEM KÂ Kİ SE NÂ DİR

SON.

E.B.