

# KÜRDÎ'Lİ HİCAZKÂR

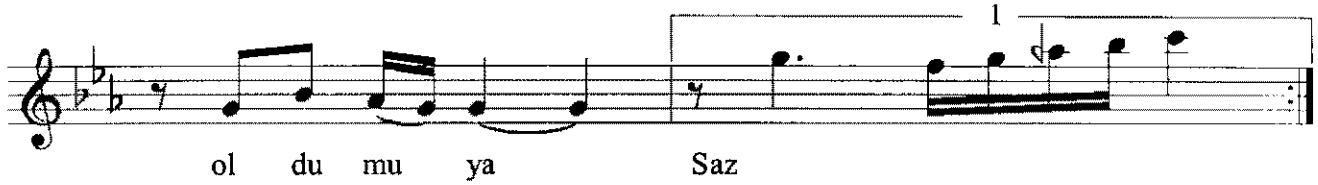
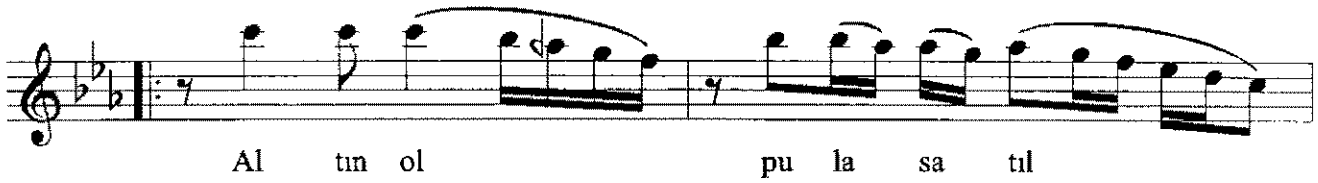
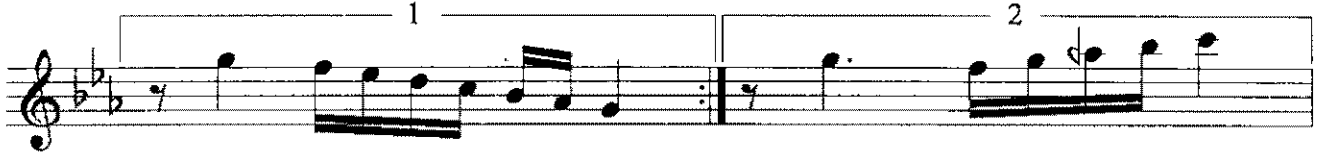
## Sevil Sevil de Atıl, Oldu mu Ya

Usûl: Düyek

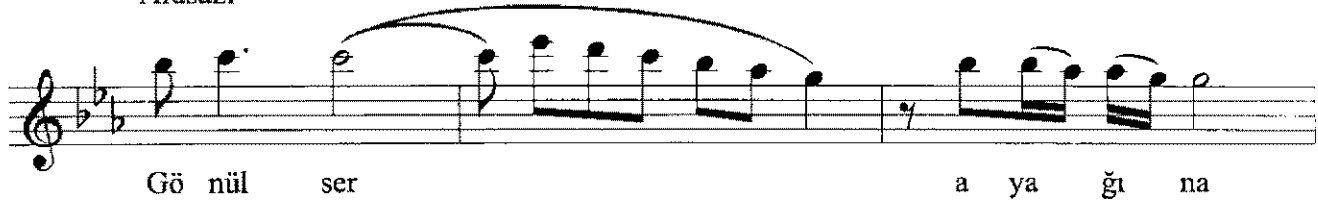
♩ = 144

Beste: Avni ANIL

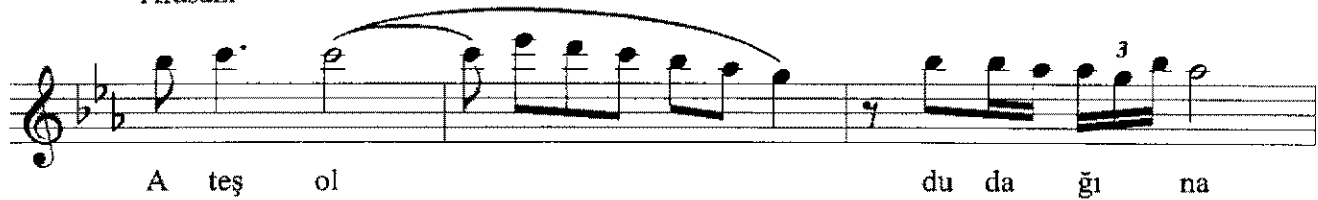
Güfte: Rüşti ŞARDAĞ



Arasazı



Arasazı



Saz

Gel me den

KÜRDÎLÎ HİCAZKÂR  
Sevil Sevil de Atıl, Oldu mu Ya

2

en so nu na Saz Bir ki tab  
gi bi ya kıl ol du mu ya

The image shows two staves of musical notation in a treble clef with a key signature of one flat (B-flat). The first staff contains the melody for the first line of the song, with lyrics 'en so nu na Saz Bir ki tab' written below it. The second staff contains the melody for the second line, with lyrics 'gi bi ya kıl ol du mu ya' written below it. The music features various note values, including quarter, eighth, and sixteenth notes, and rests. There are also some decorative flourishes and slurs over the notes.

Sevil sevil de atıl, oldu mu ya  
Altın ol, pula satıl oldu mu ya  
Gönül ser ayağına,  
Ateş ol dudağına  
Gelmeden en sonuna  
Bir kitab gibi yakıl, oldu mu ya!