

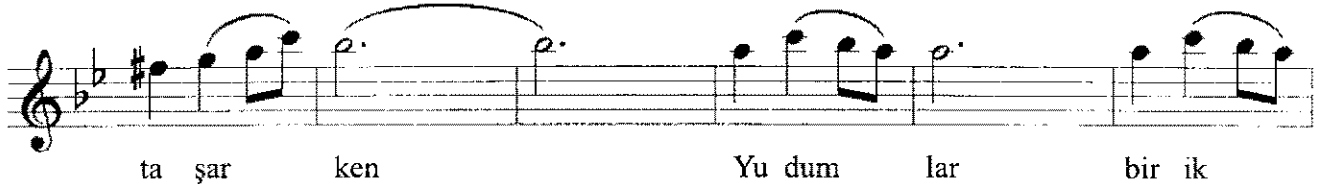
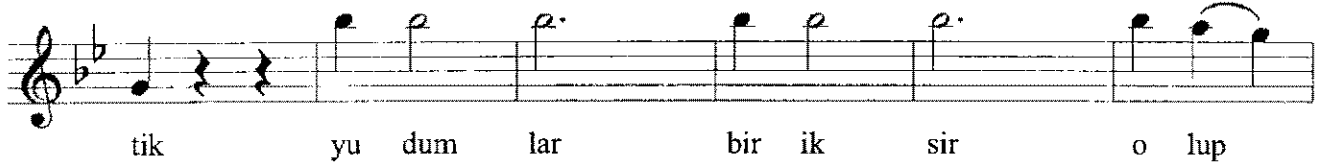
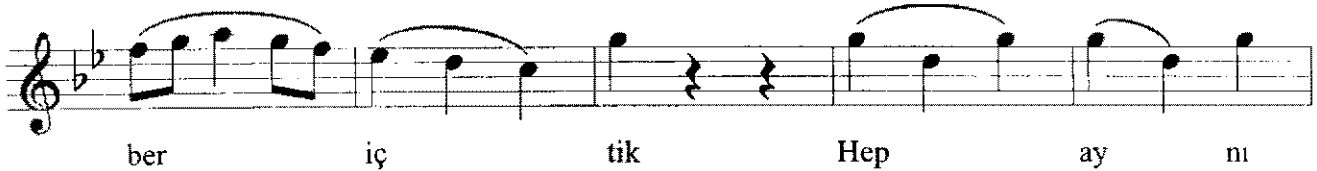
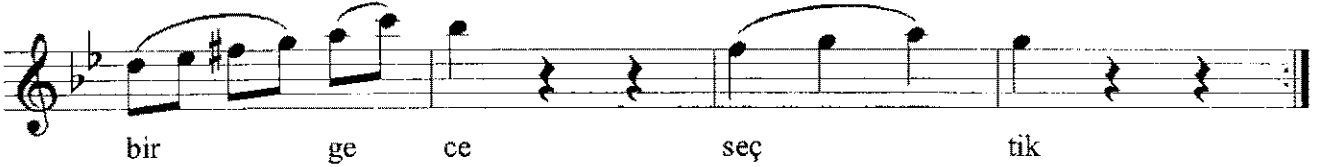
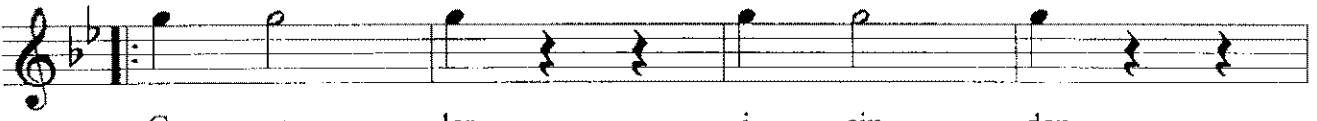
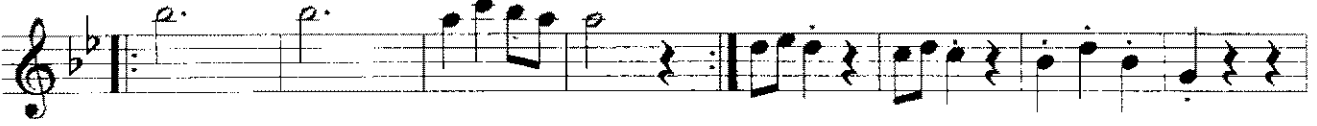
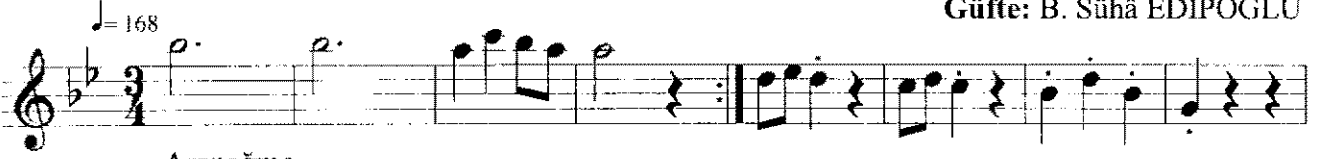
# NIHÂVEND

## Geceler İçinden Bir Gece Seçtik

Usûl: Semâi-Düyek

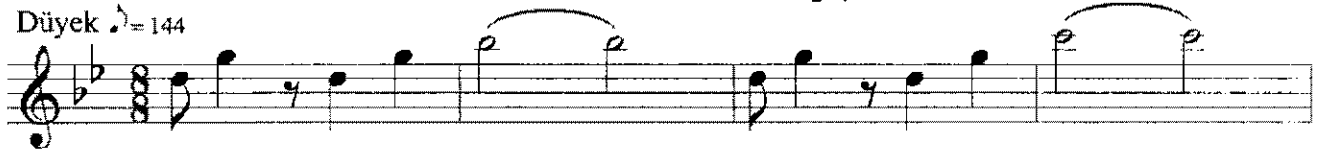
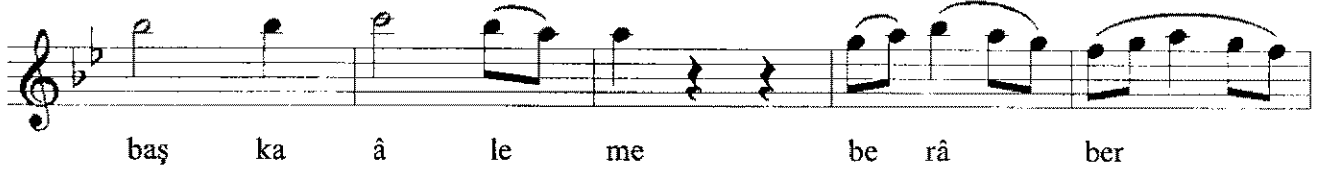
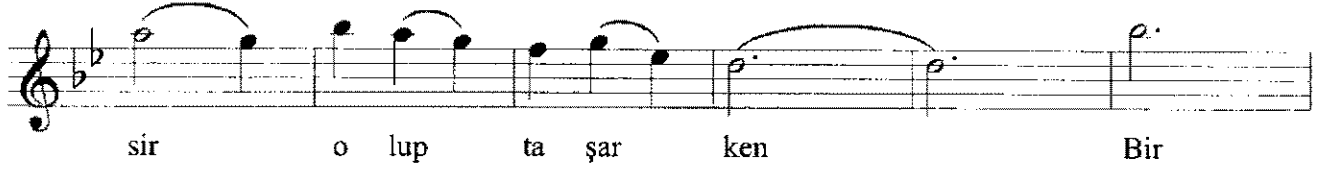
Beste: Avni ANIL

Güfte: B. Sühâ EDİPOĞLU

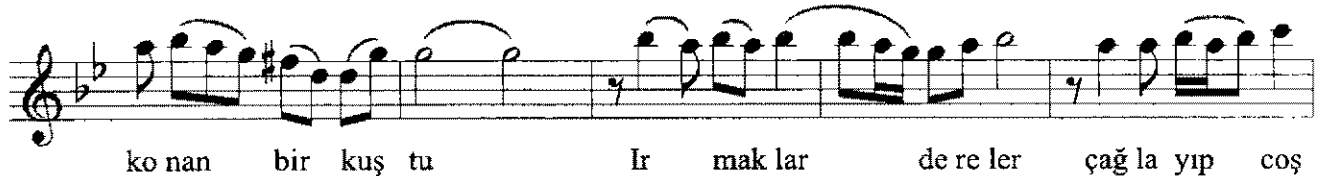


NIHÂVEND  
Geceler İçinden Bir Gece Seçtik

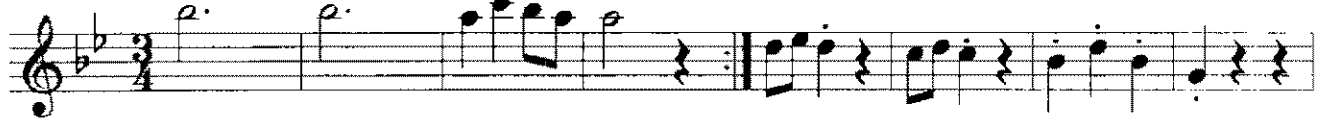
2



Arasazı



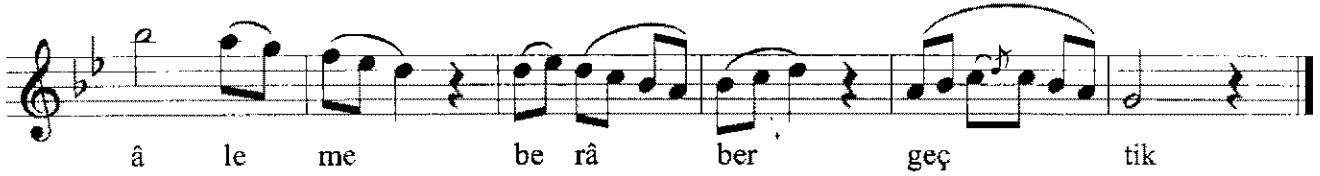
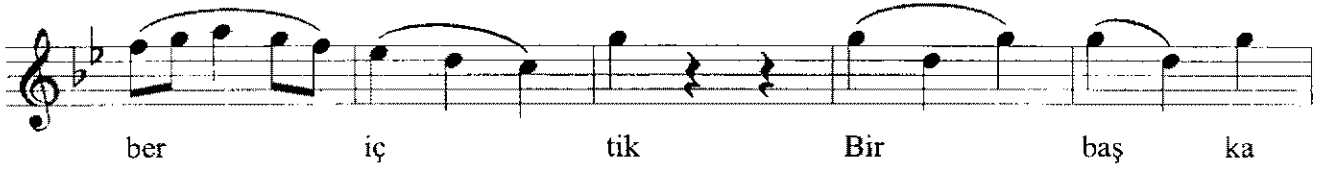
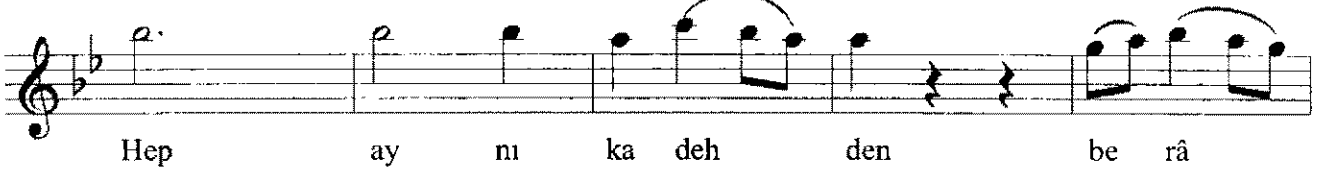
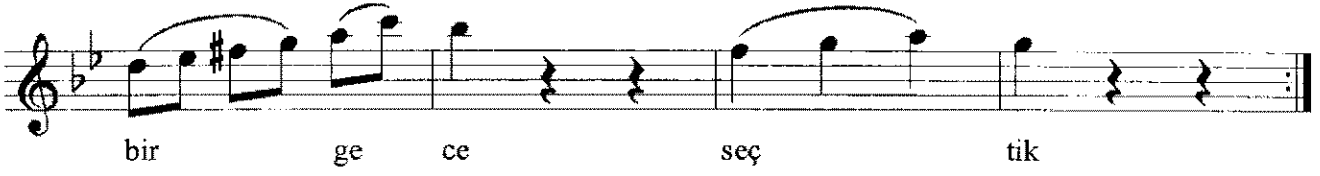
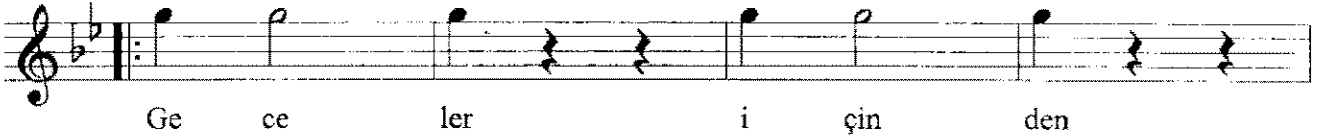
Semâi



Arasazı

NIHÂVEND  
Geceler İçinden Bir Gece Seçtik

3



Geceler içinden bir gece seçtik,  
Hep aynı kadehden berâber içtik  
Yudumlar bir iksir olup taşarken  
Bir başka âleme berâber geçtik

Şarkılar dallara konan bir kuştu  
Irmaklar, dereler, çağlayıp coştı  
Gönüller o anda yandı tutuştu