

# YÜZÜM ŞEN HATIRAM ŞEN

AKSAK

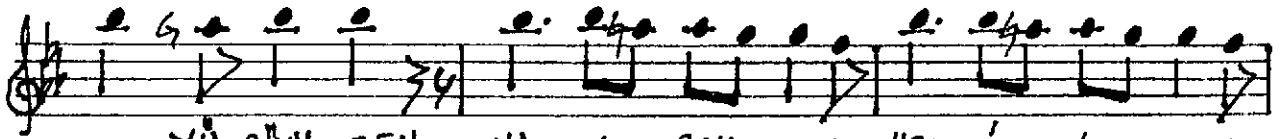
BİRİN ŞEN



YÜ ZÜM ŞEN HA TI RAM ŞEN NEC Lİ SİM ŞEN



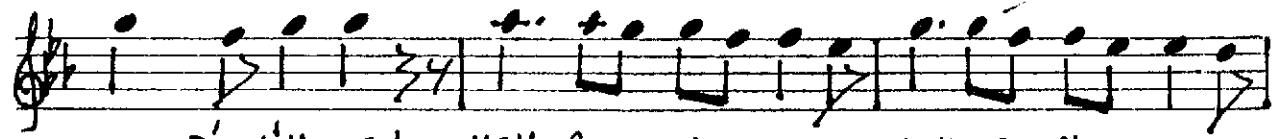
MEN Kİ ĞİM GÜL ŞEN



YÜ ZÜM ŞEN HA TI RAM ŞEN NEC Lİ SİM ŞEN



MEN Kİ ĞİM GÜL ŞEN



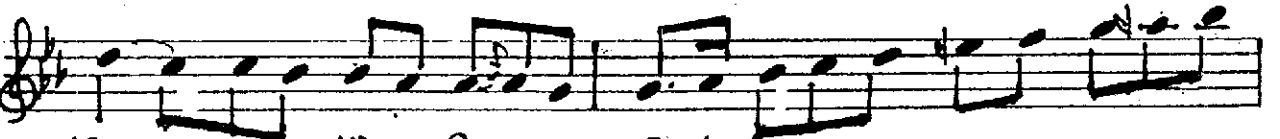
Dİ LİM ŞENİ HEM RE VİM ŞEN HEM SE RİM ŞEN



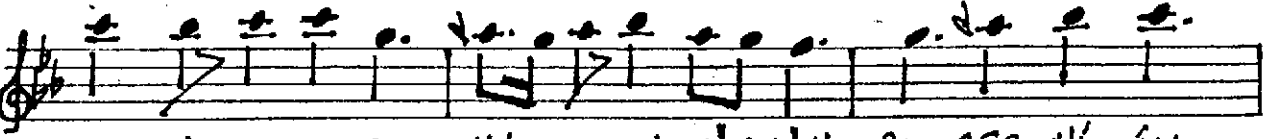
HEM DE MİM RÜ ŞEN



Dİ LİM ŞENİ HEM RE VİM ŞENİ HEM SE RİM ŞENİ



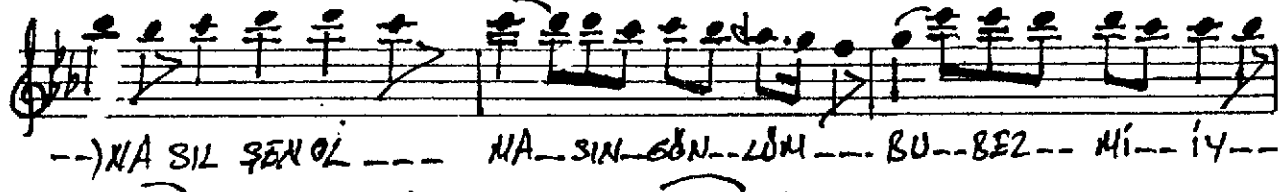
HEM DE MİM RÜ ŞEN (SAR



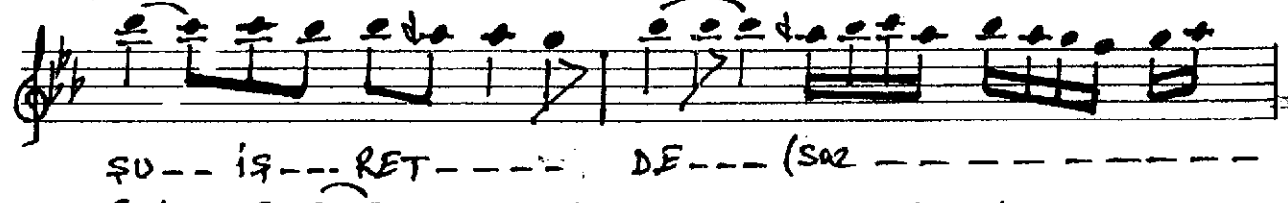
NA SİLŞENOL MA SİN GÖN LÜM BU BİR Mİ İY



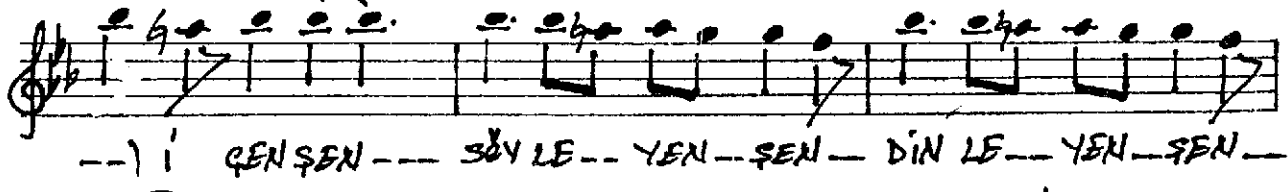
ŞU İŞ --- RET --- DE --- (SAL



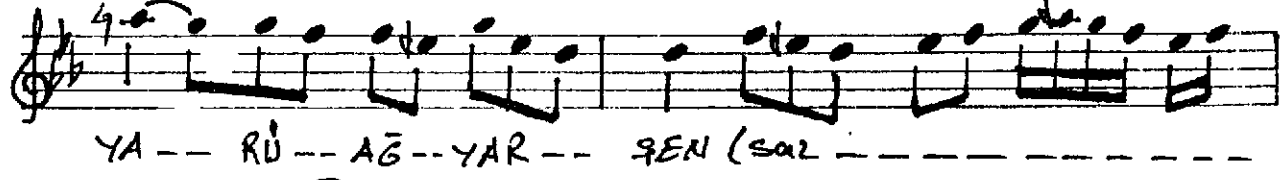
--) NA SİL ŞEN OL --- NA SIN GÖN LÜM --- BU BEZ --- Mİ --- İY ---



ŞU --- İŞ --- RET --- DE --- (SAL



--) İ ŞEN ŞEN --- SÖY LE --- YEN --- ŞEN --- DİN LE --- YEN --- ŞEN ---



YA --- RÜ --- AĞ --- YAR --- ŞEN (SAL



--) İ ŞEN ŞEN --- SÖY LE --- YEN --- ŞEN --- DİN LE --- YEN --- ŞEN ---



YA --- RÜ --- AĞ --- YAR --- ŞEN ---