

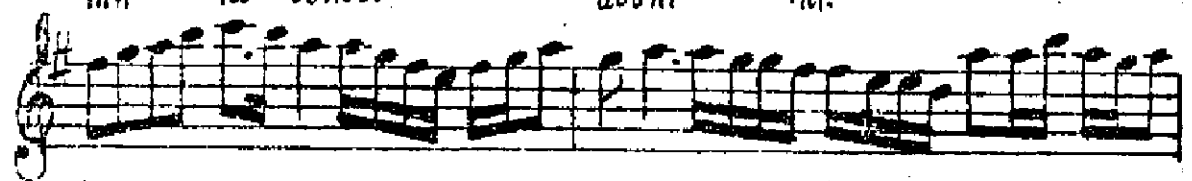
Batum K7  
بیم افندیگ

# له وردی بر کیزی Muhayyer

دی در هر سنگین سمای کیزی بر لی ن کا  
per der di ml bir guix H ni gia



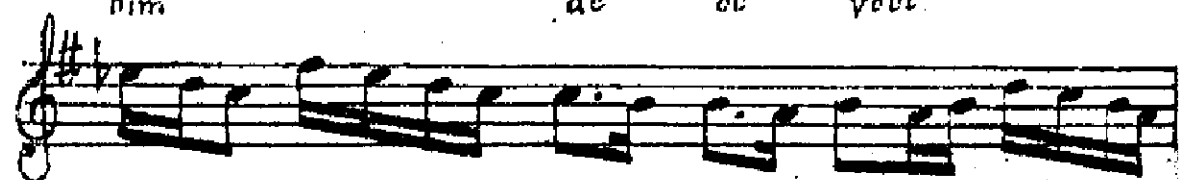
هنگ نیت او له دم «ساز»  
nin la conouli doum M.



قل و ده وا ک ن سه دم تنو  
rd yi Kal sev dim sé ni K'h va



پوت او ده  
him dé ou veut




دم «ساز» دم ساز  
doum M. doum M.




یل لار دجا فا قط ما می تدا  
yil lar dja fa Kab. Ala té mi hidj



را ra      طوت کی فی ni ni teut      دم -doun      «ساز» M.

A musical staff in G major (one sharp) with a treble clef. The melody consists of eighth and sixteenth notes, starting on G4 and ending on G5. There are some accidentals, including a double sharp on the final G.

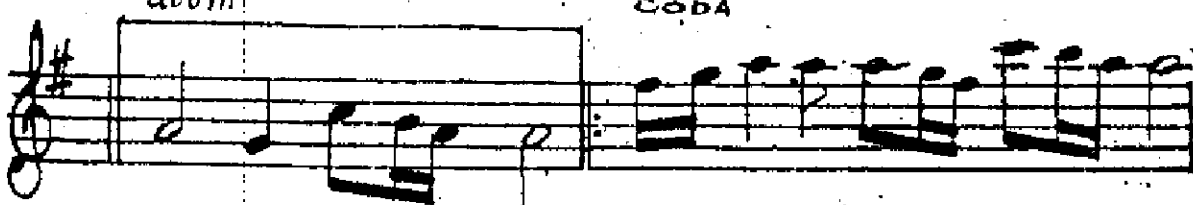
فد ر ج ل یل yil i'arujja la      ما Kat      ما ma      می Te      می mi      نیدج hidj

A musical staff in G major with a treble clef. The melody continues with eighth and sixteenth notes. There are triplets indicated by a '3' in a circle over the notes.

را ra      طوت کی فی ni ni teut      دم doun      «ساز» M.

A musical staff in G major with a treble clef. The melody continues with eighth and sixteenth notes. It ends with a double bar line and a fermata symbol.

دم doun      آره تغمه CODA

A musical staff in G major with a treble clef. It begins with a box containing a whole rest, followed by a double bar line and a repeat sign. The melody then continues with eighth and sixteenth notes.A musical staff in G major with a treble clef. The melody continues with eighth and sixteenth notes, featuring several triplets.A musical staff in G major with a treble clef. The melody continues with eighth and sixteenth notes, ending with a double bar line.