

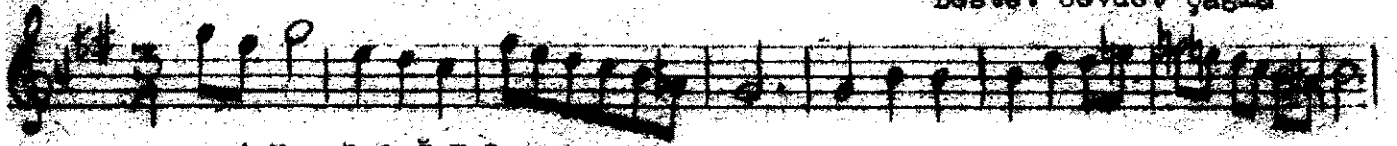
Semâî

(O SIYAH GÖZLÜ KADIN)

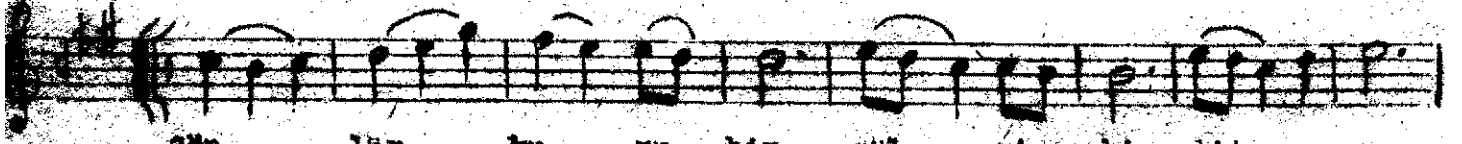
Sysinâk Sârka

Güfte: Mustafa Nâfiz İzzak

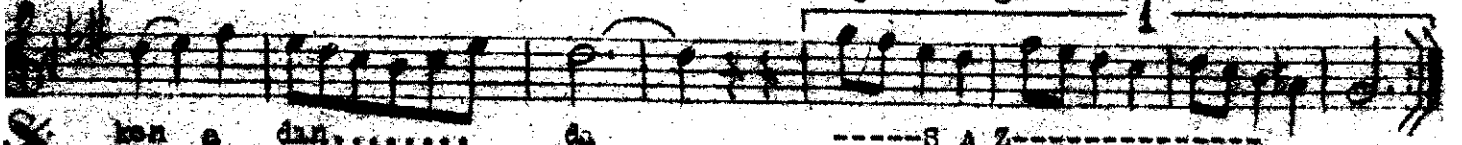
Beste: Cevdet Çağla



---A r a n a ğ ı n e---



gön lüm ku ru bir gül gi bi tit rer

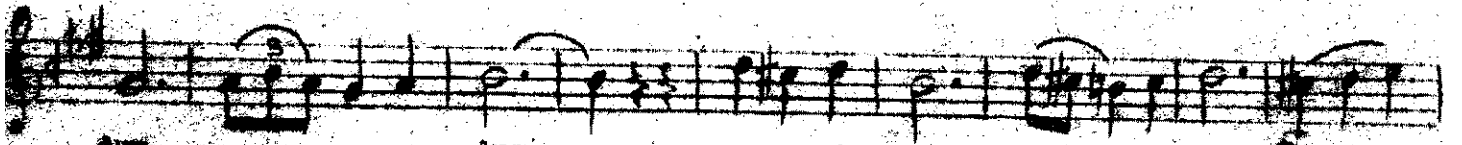


ken a dan..... da

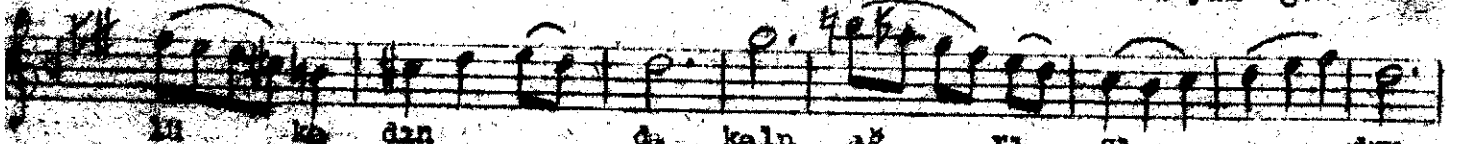
---S A Z---



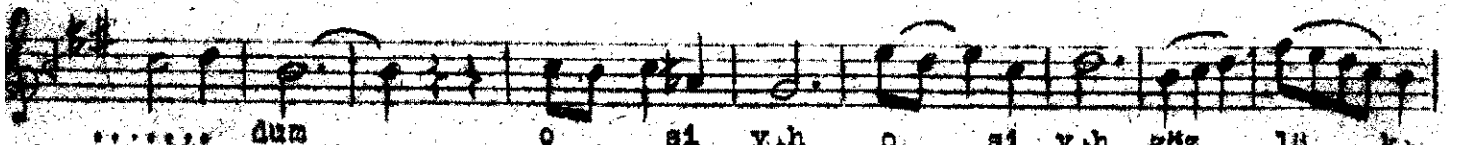
---S A Z--- Kalp ağ..... ıı sı.....



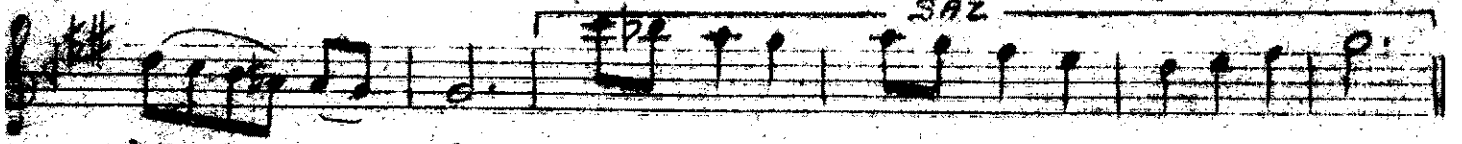
duy..... dum o sı yah o sı yah gön



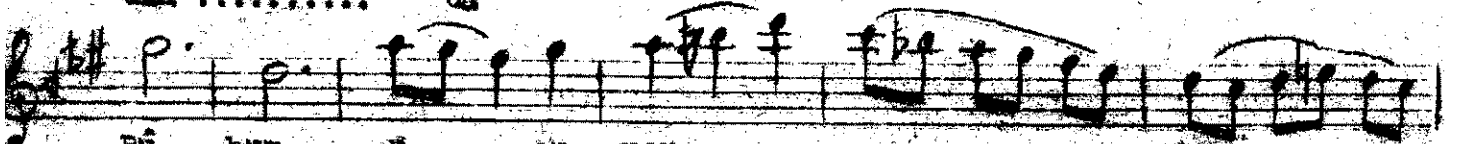
lu ke dan da kalp ağ ıı sı..... duy



..... dum o sı yah o sı yah gön lü ka



dan..... da



Rû hum u şu yor..... aş..... kan.....



i lâ hi ke na dan..... da

Gönlüm kuru bir gül gibi titrerken adında
Kalp ağrısı duydum, O siyah gözlü kadında
Ruhum uçuşuyor, aşkın ilâhî Kanadında
Kalp ağrısı duydum, O siyah gözlü kadında.