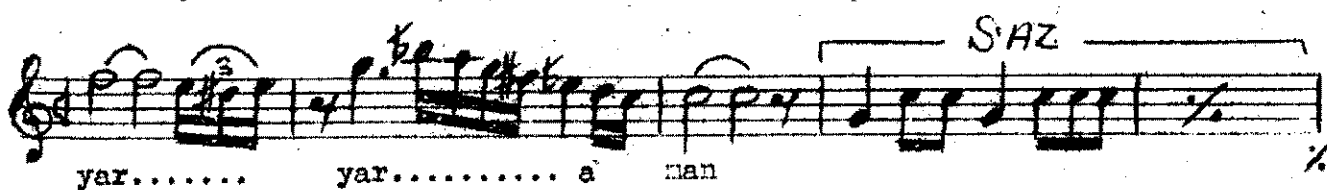
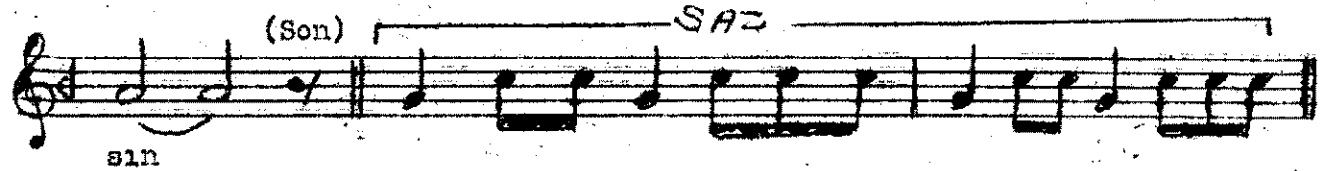
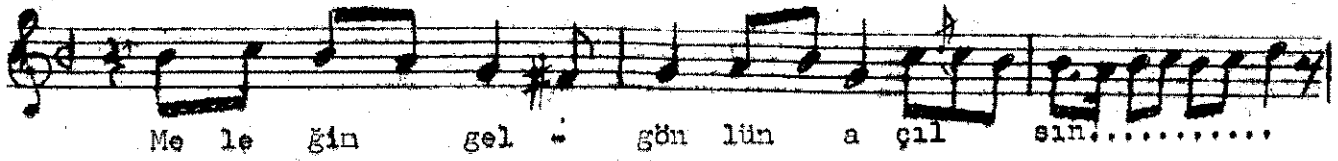
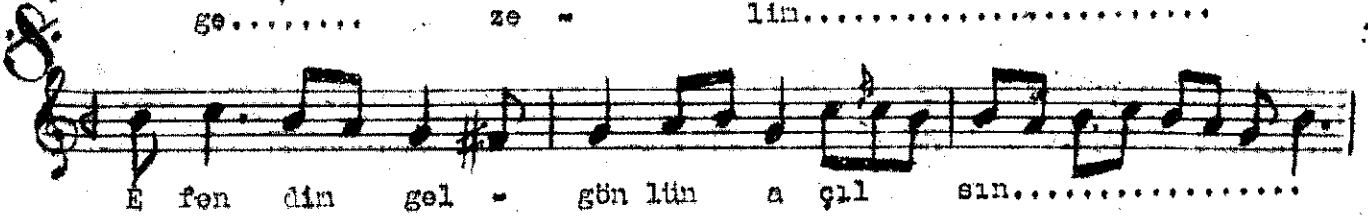
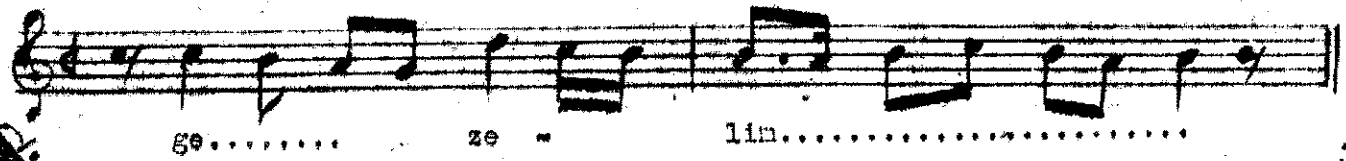
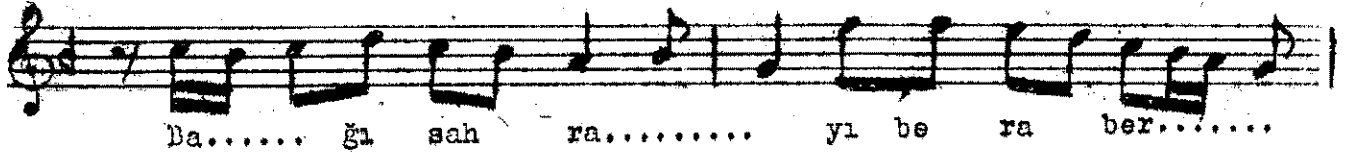
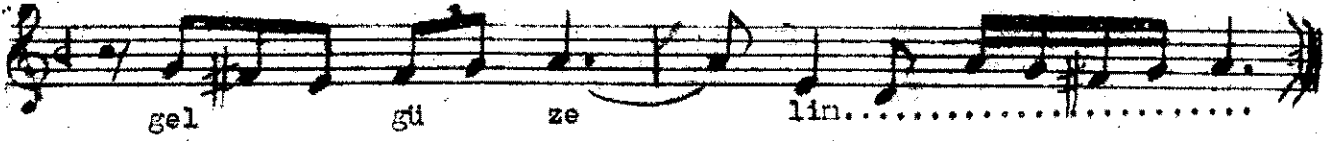


Aksak

UŞSAK ŞARKI

Dellâlîzade
İsmail Efendi



yar..... yar.....

Gel gi de lin..... sah ra la

ra..... Ah.....

dağ la ra..... bağ la ra ye şil kën

ha..... lar dū şen..... niş

ah..... bağ la ra

(Aranağnesi)

Muntazırdır sana uşşak gel güzelin
 Bağ-ı sahrayı beraber gezelin
 Efendin gel gönlün açılın
 Yanağında güller seçilsin
 Bezninize safa saçılın
 Yar yar aman gel gidelin
 Sahralara dağlara bağlara
 Yeşil kenhalar döşenmiş, dağlara bağlara.