

EVCÂRÂ PEŞREV

USÛL: ÇIFTE DÜYEK

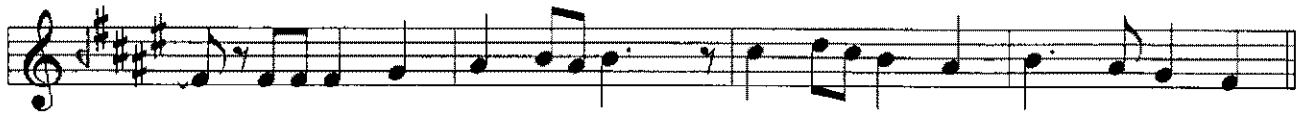
BESTE: TANBURI DİLHAYAT KALFA

Birinci Hane

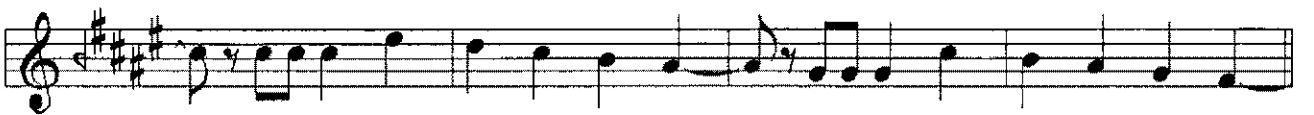
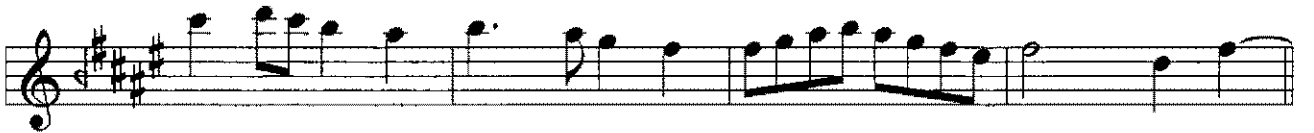
The first hane consists of six staves of music. The key signature is three sharps (F#, C#, G#) and the time signature is 2/4. The melody is written in a single voice on a treble clef. The first staff begins with a quarter rest followed by a quarter note G#4, then a quarter note A4, and a quarter note B4. The second staff continues with a quarter note C5, a quarter note B4, a quarter note A4, and a quarter note G#4. The third staff has a quarter note F#4, a quarter note G#4, a quarter note A4, and a quarter note B4. The fourth staff has a quarter note C5, a quarter note B4, a quarter note A4, and a quarter note G#4. The fifth staff has a quarter note F#4, a quarter note G#4, a quarter note A4, and a quarter note B4. The sixth staff has a quarter note C5, a quarter note B4, a quarter note A4, and a quarter note G#4.

İkinci Hane

The second hane consists of five staves of music. The key signature is three sharps (F#, C#, G#) and the time signature is 2/4. The melody is written in a single voice on a treble clef. The first staff begins with a quarter note G#4, a quarter note A4, a quarter note B4, and a quarter note C5. The second staff has a quarter note B4, a quarter note A4, a quarter note G#4, and a quarter note F#4. The third staff has a quarter note E4, a quarter note D4, a quarter note C4, and a quarter note B3. The fourth staff has a quarter note A3, a quarter note G#3, a quarter note F#3, and a quarter note E3. The fifth staff has a quarter note D3, a quarter note C3, a quarter note B2, and a quarter note A2.



Üçüncü Hane



The first three staves of the musical score are written in treble clef with a key signature of three sharps (F#, C#, G#) and a 2/4 time signature. The first staff begins with a quarter rest followed by a series of eighth and quarter notes. The second staff continues with a similar rhythmic pattern, including a quarter rest and a dotted quarter note. The third staff concludes with a quarter note and a quarter rest.

Dördüncü Hane

The section titled 'Dördüncü Hane' consists of ten staves of musical notation. It maintains the same key signature and time signature as the previous section. The notation features a variety of rhythmic values, including eighth notes, quarter notes, and dotted quarter notes, often grouped together. The piece concludes with a quarter note and a quarter rest on the final staff.