

# SİPIHR PEŞREV

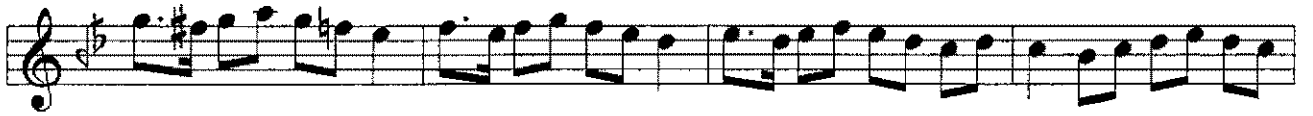
USÛL: MUHAMMES

BESTE: TANBURI  
DİLHAYAT KALFA

*Birinci Hane*



*Mülâzime* §



*İkinci Hane*



Üçüncü Hane



Musical notation for Üçüncü Hane, consisting of four staves. The notation is in treble clef with a key signature of one flat (B-flat) and a 2/4 time signature. The melody is written in a single line on each staff, featuring a mix of eighth and sixteenth notes, with some rests and accidentals (flats). The piece concludes with a double bar line and a repeat sign.

Dördüncü Hane



Musical notation for Dördüncü Hane, consisting of four staves. The notation is in treble clef with a key signature of one flat (B-flat) and a 2/4 time signature. The melody is written in a single line on each staff, featuring a mix of eighth and sixteenth notes, with some rests and accidentals (flats and sharps). The piece concludes with a double bar line and a repeat sign.

Bu eser TRT Müzik Dairesi Arşivinden alınmıştır.