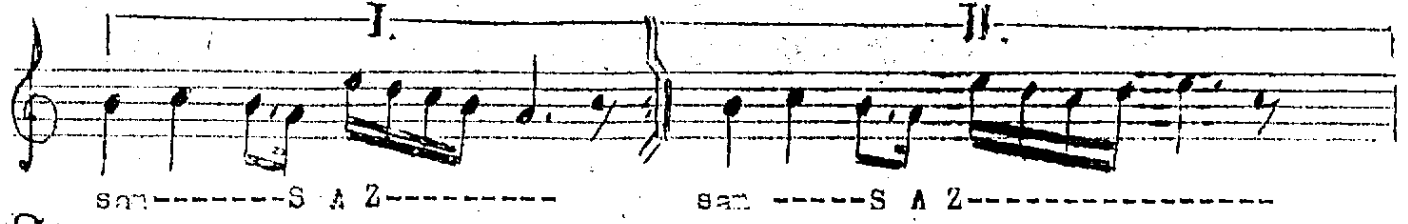
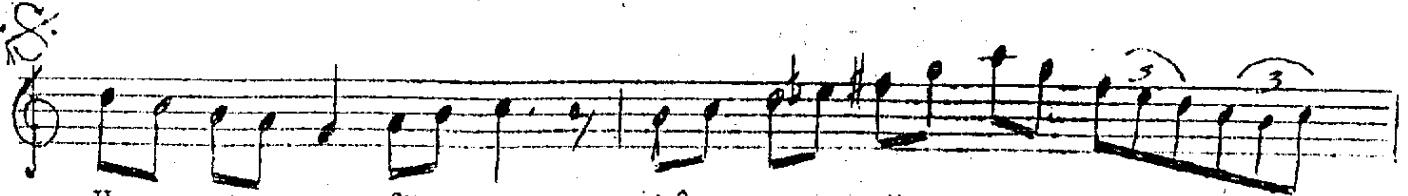


Her an o siyah göz.. le ri nin nu... ru nayan

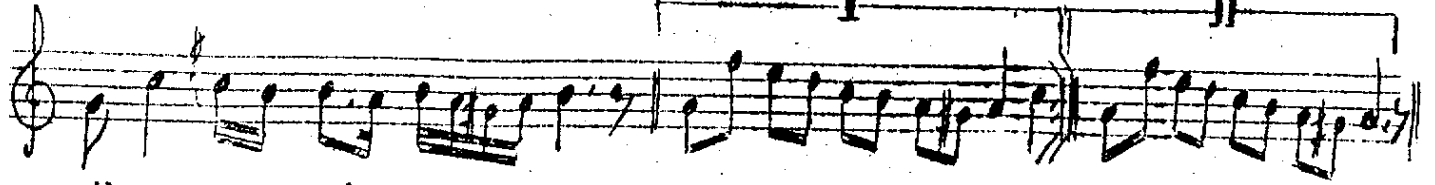


san-----S A Z-----

san -----S A Z-----



Her gün o fü sun kâr..... sö zü nün
Kal san ne o lur aş..... kı nın ez



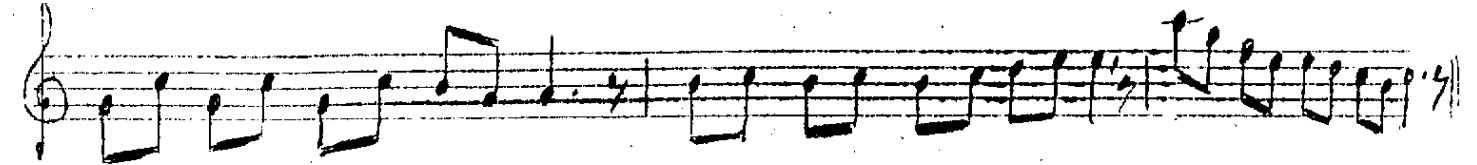
sih..... ri ne dal san san
va..... kı na kan san



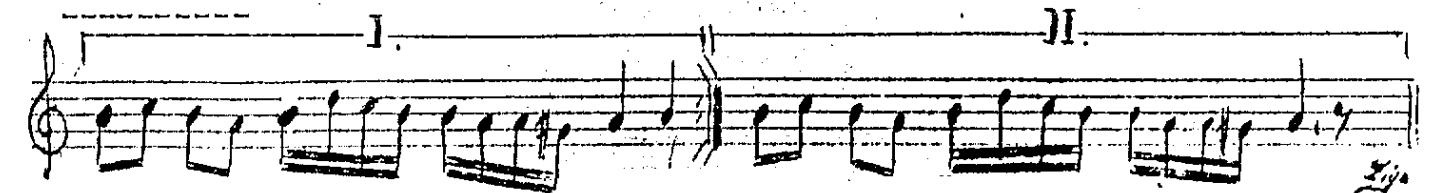
Is sız ge ce ler sub..... ha ka dar



baş..... ba şa kal bah



Aranâgîre



Her an o siyah gözlerinin nuruña yansan
Her gün o füsunkâr sözünün sihrine dalsan,
Buiz geceler supha kadar başbaşa kalsan
Kalsan ne olur aşkının özvekinâ kânsam...