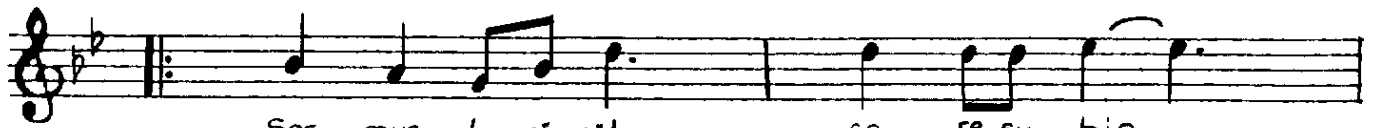


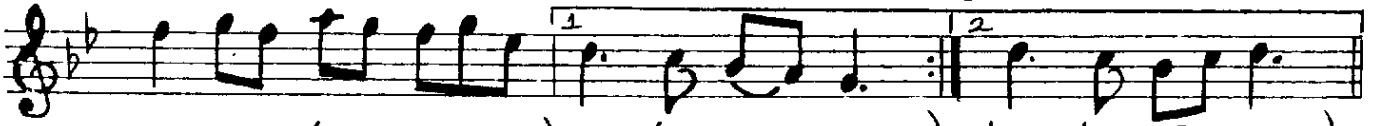
Usulü: Aksak
M=208

MÜHÜRÜNÜ SARMAN
SORMUŞTU GÖNÜL

Müzik: Erol Sayın
Söz: Samim Fırlıoğlu



Sor mus tu gö nül qa re şu hic
Sa hil ler i şık sız ge ce hül



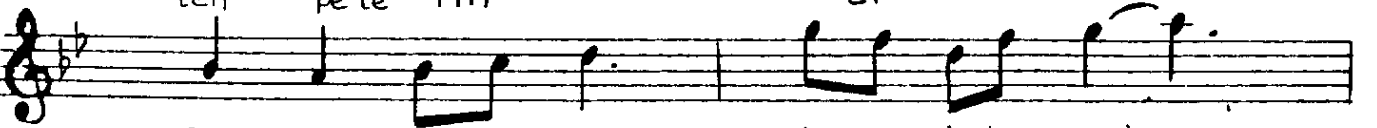
ra ni ma (SAZ) dan di (... SAZ ...) dan di (... SAZ ...)
ya lı de rin



Son san dal u zak laş tı ha yal
İş ret le mu hab bet ga mı ör



ol du bo ğaz dan di (SAZ)
ten pe le rin



Son san dal u zak laş tı ha yal
İş ret le mu hab bet ga mı ör



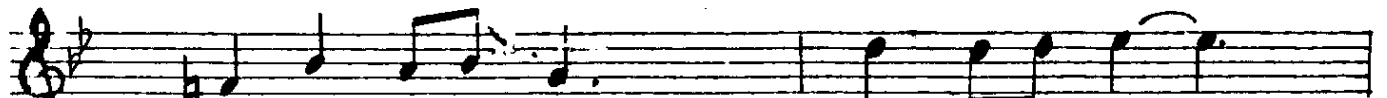
ol du bo ğaz dan di (... SAZ ...)
ten pe le rin



Ay ört tü su yun üs tü nü bir
ru hum gi bi her hal de u zak



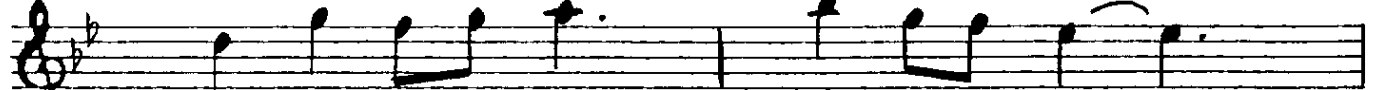
sal la be yaz dan di (.. SAZ ..)
ül ke le rin



Ay ört tū su yun ūs tū nū bir
Ru hum gi bi her hal de u zak



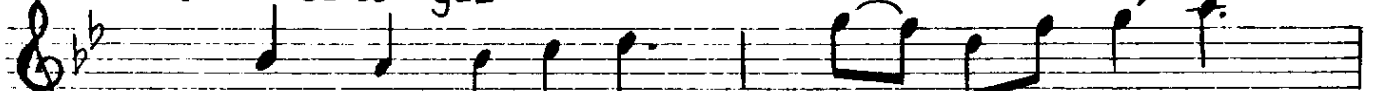
sal la be yaz dan (... SAZ ...)
ül ke le rin di




son son dal u zak laş ti ha yal
bir san dal u zak laş ti ha yal



ol du bo ğaz dan (SAZ)
ol du bo ğaz dan



Son son dal u zak laş ti ha yal
bir san dal u zak laş ti ha yal



ol du bo ğaz dan (SAZ)
ol du bo ğaz dan

OC