

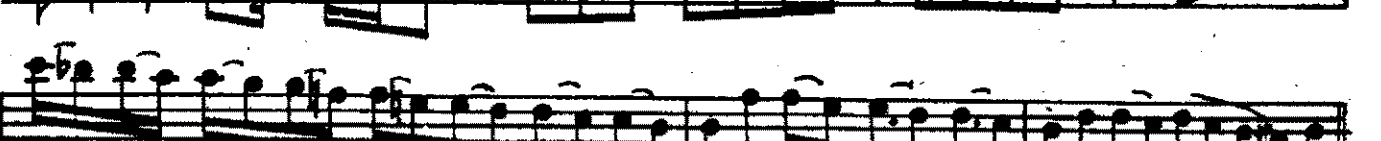
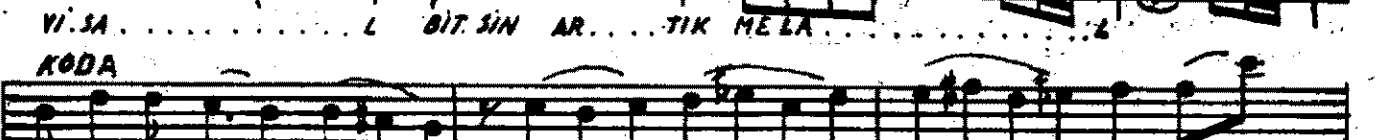
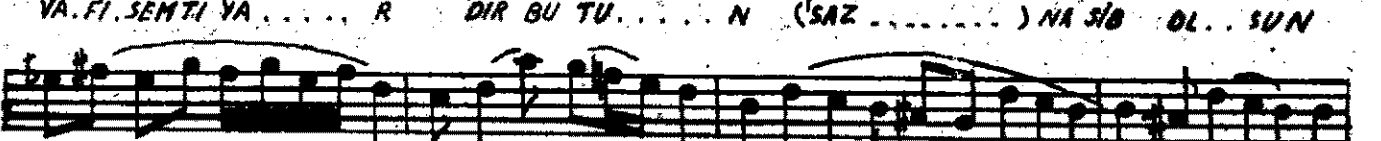
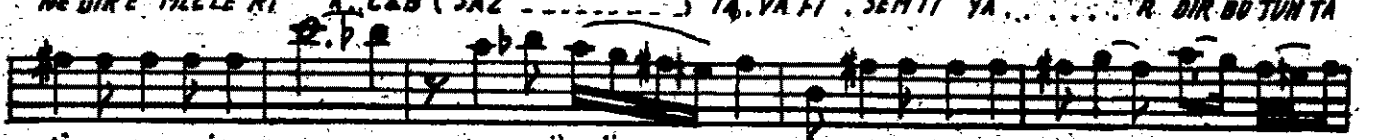
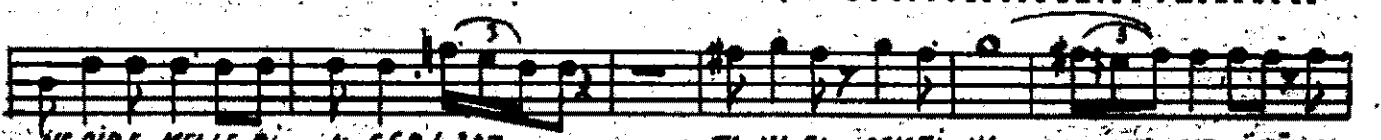
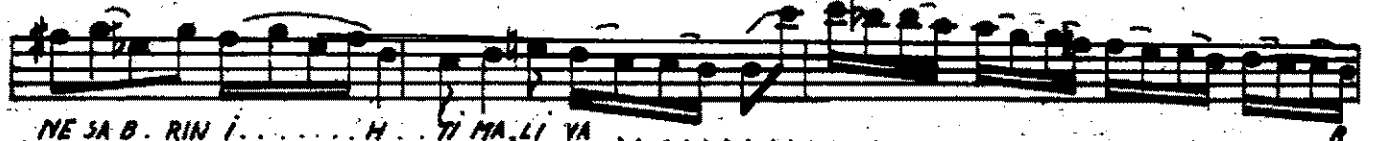
DÜYEK

# ZAVALLI GÖNLÜM

ARAB ÜSLUBUNDA SEBÂH FANTAZİ

FÂHRİ KOPUZ

1924 HAZİRAN A. HISAB



\* UZUN ESİLER DÜYEK TEMPOSİ İLE DOLDURULMALIDIR

ZAVALLI GÖNLÜMÜN YİNE AÇIKLI BİR MELÂLİ VAR  
NEDEN NİÇİN YİN NE OLDU ?  
NE BİR NEFES KARÂRİ VAR NE SABRİN İHTİMÂLİ VAR

BÜTÜNEMELLERİ  
NEDİREMELLERİ ACEB  
TAVÂFİ SEMTİ YÂRDİR BÜTÜN  
NASİB OLSUN VİSA L BİTSİN AR TIK MELÂL