

Mıcazkar Köşme

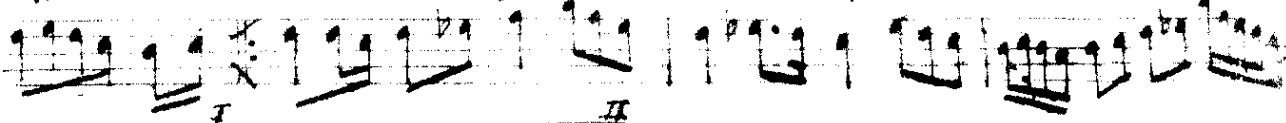
Faz Nâpî'nin

GELSE NİN LE KOL KO LA ŞOY LE

gi DELİM Bağ LAR BA ŞI



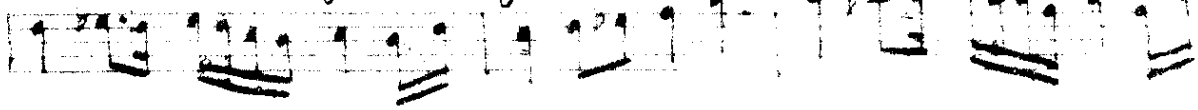
NA SE Vİ ŞE LİM ŞOY LE BOY LE O TU RA LIM



TA ŞI NA TA ŞI NA NAZ LI DİL BER



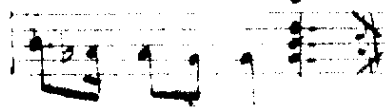
NAZ ET ME GEL gi DE LİM DA ĞIN BA ŞI NA



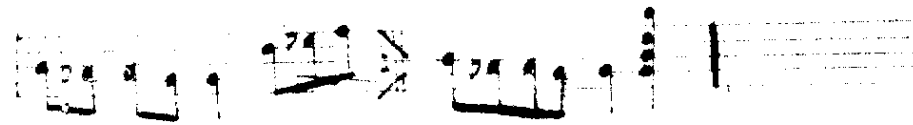
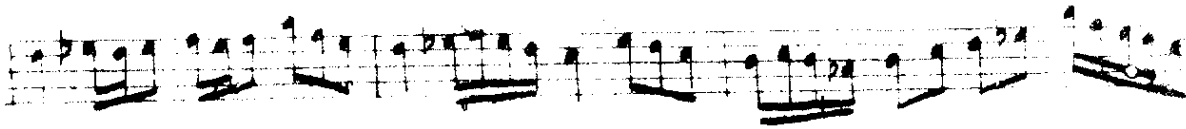
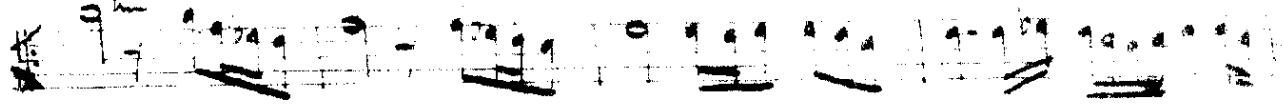
KUŞ LAR BI ZE OL MAZEN GEL O TU RA LIM



TA ŞI NA



ARANAME



yeşil camlar, sık ormanlar
çemenler, dağlar, yuvalar
şahit olsun sevdamıza
sen olsun bağlar ovalar

nazlı delber, nazlıme gel
gidelim dağın başına
kuşlar Biz ot. yugel
oturalım taşına