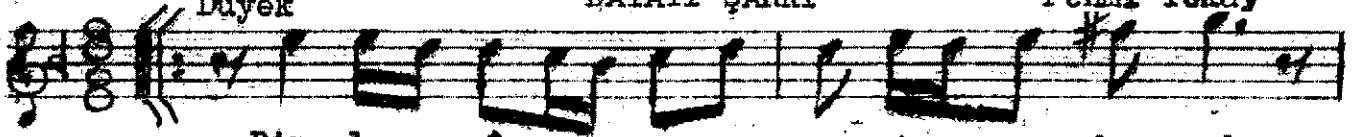


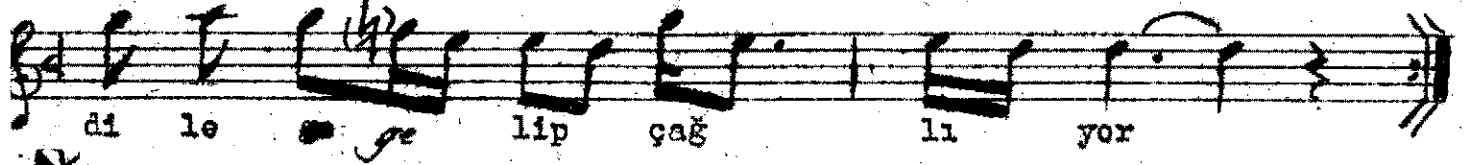
Düyek

BAYATI ŞARKI

Fehmi Tokay



Din le cân na se sin de aşk



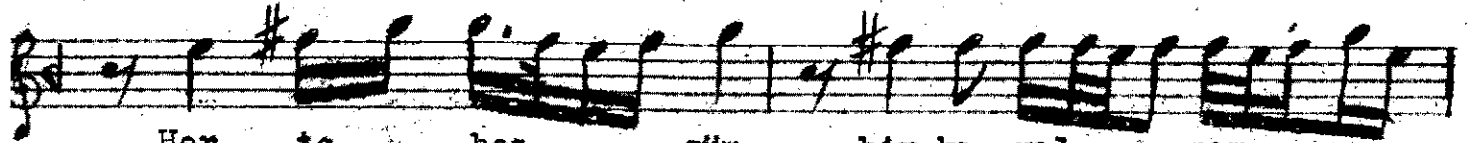
di le ge lip çağ lı yor



Ben çö zül nek is te dik çe



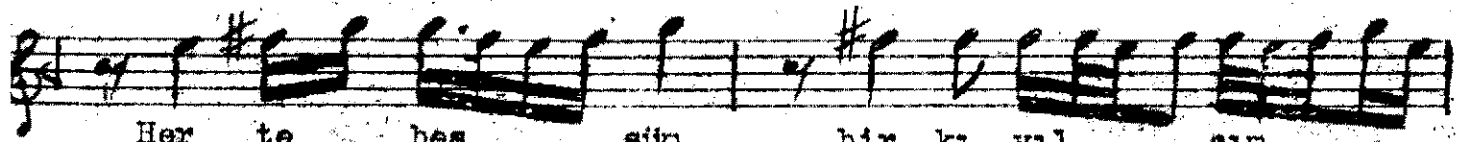
gö nül sa na bağ lı yor



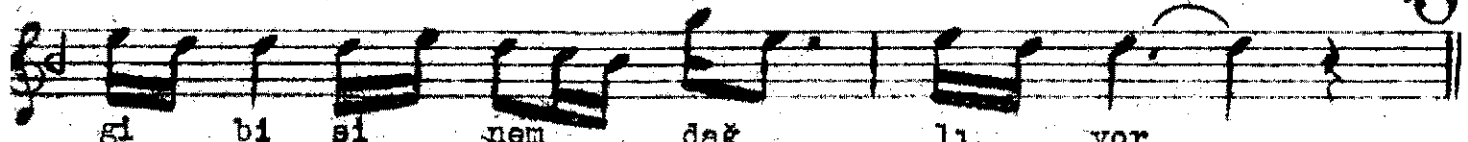
Her te bes sün bir kı vıl ... cim.....



gi bi si nem dağ lı yor

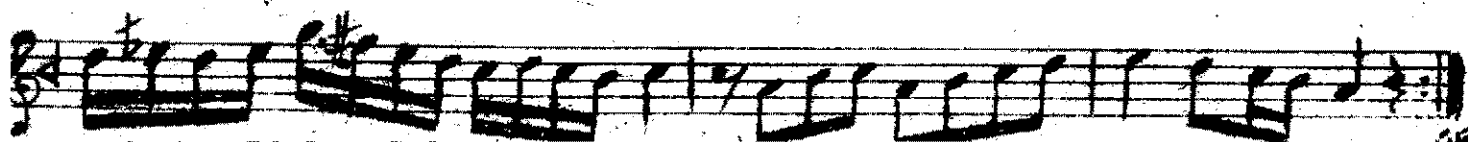
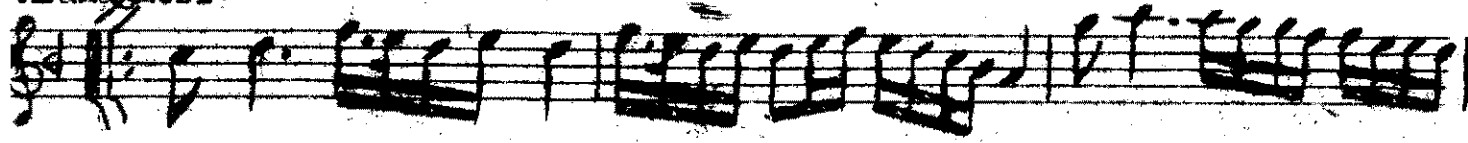


Her te bes sün bir kı vıl cim.....



gi bi si nem dağ lı yor

Aranânesi.



Dinle cânâ sesinde aşk dile gelip çağlıyor  
Ben çözülmek istediçe gönül sana bağlanıyor  
Her tebessüm bir kıvılcım gibi sinem dağlıyor