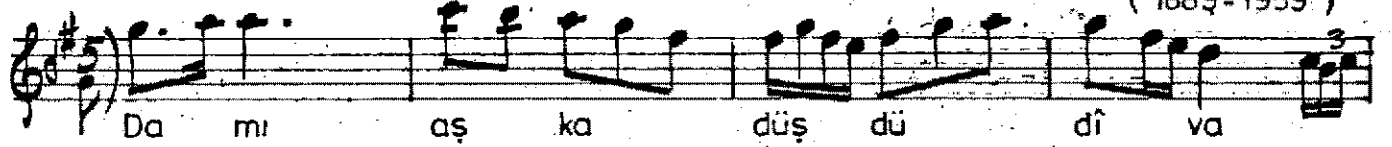


Aksağı

TANHA ŞARKI

"Dām-ı aşka düşdü dîvâne gönlüm

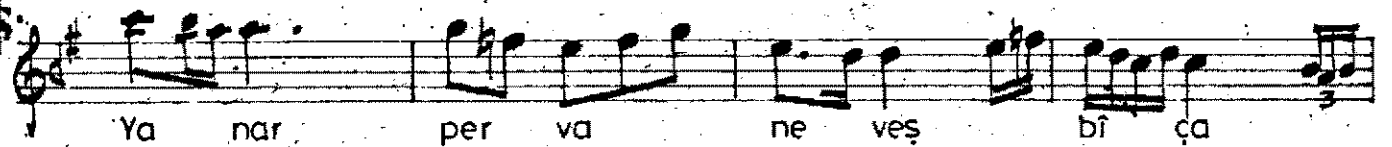
(1889-1959)



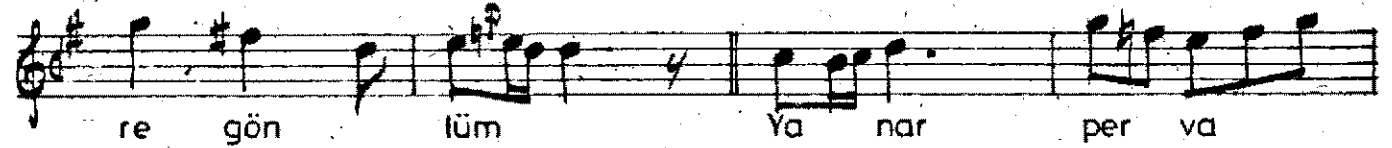
Da mı aş ka düş dü dî va



ne gön lüm



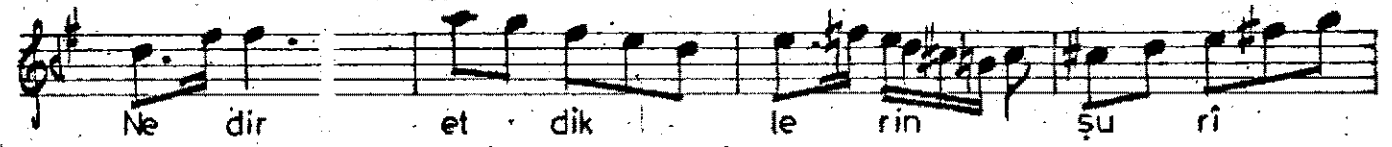
Ya nar per va ne veş bî ça



re gön lüm Ya nar per va



ne veş bî ça re gön lüm



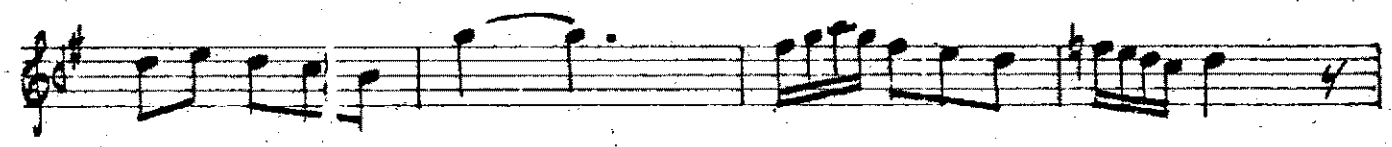
Ne dir et dik le rin şu ri



de ha lîm Ne dir et dik



le rin şu ri de ha lîm



CO.84

Dām-ı aşka düşdü dîvâne gönlüm
Yanar pervâne-veş bî-çäre gönlüm
Nedir etdiklerin şü ide hālîm
Yanar pervâne-veş bî-çäre gönlüm

dām - tuzak
dîvâne - deli, budala, alık
pervâne-veş - pervâne gibi
bî-çäre - cāresiz
şüide - peristan