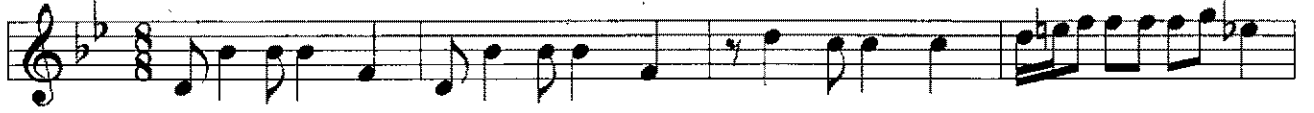



FERAHNÜMÂ PEŞREV

USÛL: DÜYEK

BESTE: H. SADETTİN AREL

Birinci Hane



Mulâzime 



SON

İkinci Hane

The musical notation for the second hane (İkinci Hane) is presented in a single system with eight staves. The key signature is one flat (B-flat), and the time signature is 2/4. The notation includes various rhythmic values such as eighth and sixteenth notes, as well as rests. The piece concludes with a double bar line and a repeat sign.

Üçüncü Hane

The musical notation for the third hane (Üçüncü Hane) is presented in a single system with four staves. The key signature is one flat (B-flat), and the time signature is 2/4. The notation includes various rhythmic values such as eighth and sixteenth notes, as well as rests. The piece concludes with a double bar line and a repeat sign.

Dördüncü Hane

The image displays a musical score for a piece titled "Dördüncü Hane". The score is written on five staves, each beginning with a treble clef and a key signature of two flats (B-flat and E-flat). The first staff contains a sequence of quarter notes, followed by a group of eighth notes. The second staff features a rhythmic pattern of eighth notes with beams, interspersed with quarter notes. The third staff consists of a series of half notes. The fourth and fifth staves show a melodic line with eighth notes and quarter notes, ending with a double bar line and a repeat sign (a stylized 'S' symbol).