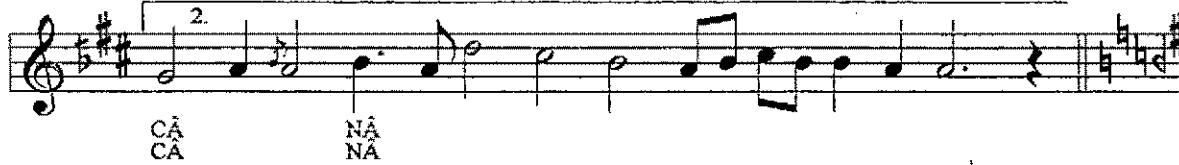
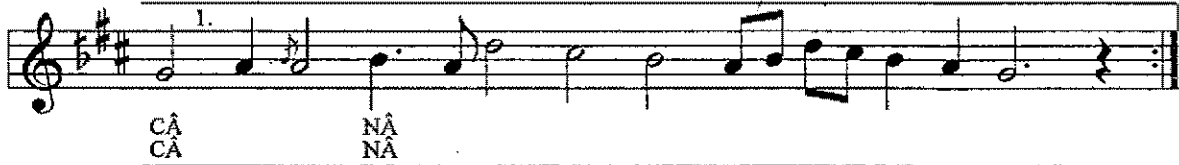
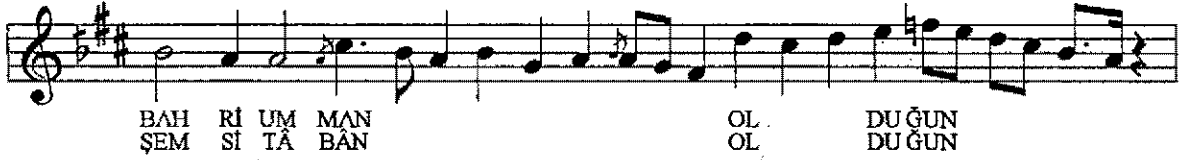
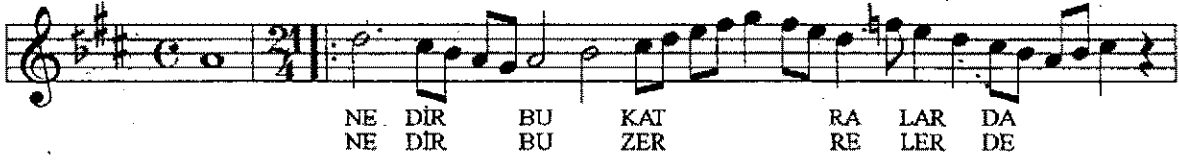


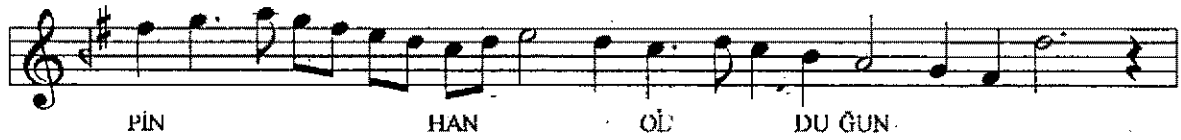
# HİCAZ DURAK

Bestekâr : H. SADEDDİN AREL

Güftekâr : SEZÂÎ

Usulü: Durak evferi (Ağra)





Musical staff 1 with lyrics: PİN HAN OL DU ĞUN



Musical staff 2 with lyrics: CÂ NÂ



Musical staff 3 with lyrics: DE MIŞ SIN GÖR ME Dİ



Musical staff 4 with lyrics: KİM SE BE Nİ



Musical staff 5 with lyrics: BU Â LEM İ ÇİN DE



Musical staff 6 with lyrics: NE DİR YA BUN CA YÜZ DEN



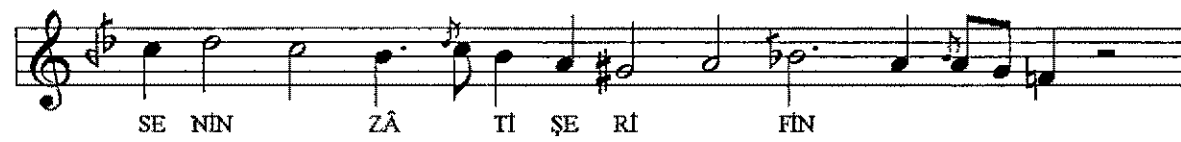
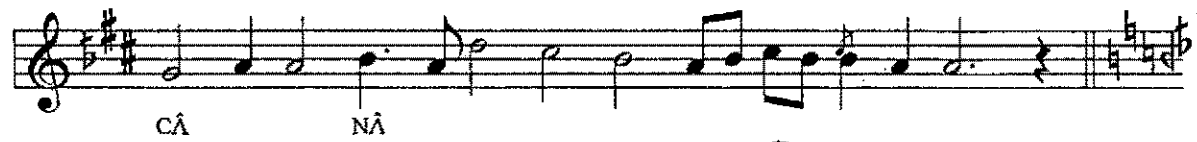
Musical staff 7 with lyrics: Yİ NE SEY RÂN OL DU ĞUN



Musical staff 8 with lyrics: CÂ NÂ



Musical staff 9 with lyrics: E Sİ Rİ DER Dİ MİH NET



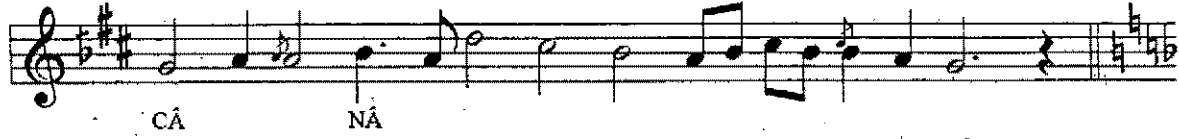


MİH

MÂN

OL

DUĞUN



CÂ

NÂ



SE

Nİ

DER

SİN

SE ZÂ

İ



NÂ

Rİ HEC

Rİ LE



İ

DEM SÛ

ZÂN



NE

DİR

Yİ

NE

BE NİM

LE BEN DE



HER

ÂN

OL

DUĞUN



CÂ

NÂ

*rallentando* .....

ÖZATA

NEDİR BU KATRELERDE BAHR-İ UMMÂN OLDUĞUN CÂNÂ  
NEDİR BU ZERRELERDE ŞEMS-İ TÂBÂN OLDUĞUN CÂNÂ  
ÇÜ SENSİN ZÂHİR Ü BÂTİN HAKİKATDE OLAN MEVCÛD  
NEDİR BU NAKŞ-I GÜ-NÂ-GÜNDA PİNÂN OLDUĞUN CÂNÂ  
DEMİŞSİN GÖRMEDİ KİMSE BENİ BU ÂLEM İÇİNDE  
NEDİR YÂ BUNCA YÜZDEN YİNE SEYRÂN OLDUĞUN CÂNÂ

ESİR-İ DERD-İ MİHNET EYLEDİM DERSİN EBED ÇÜN KİM  
NEDİR YİNE GÖNÛL DERSİN DERMÂN OLDUĞUN CÂNÂ  
MEKÂNLARDAN MÜNEZZEH DİR SENİN ZÂT-İ ŞERİFİN ÇÜN  
NEDİR BU KALB-İ VİRANINDA MİHMÂN OLDUĞUN CÂNÂ  
SENİ DERSİN SEZÂ İ NÂR-İ HECR İLE EDEM SÛZÂN  
NEDİR YİNE BENİMLE BENDE HER ÂN OLDUĞUN CÂNÂ