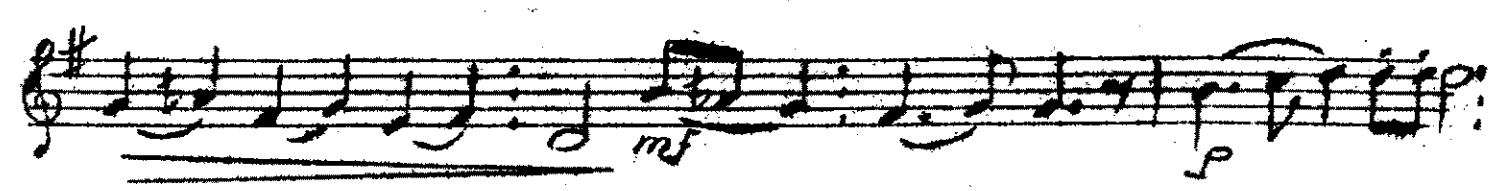
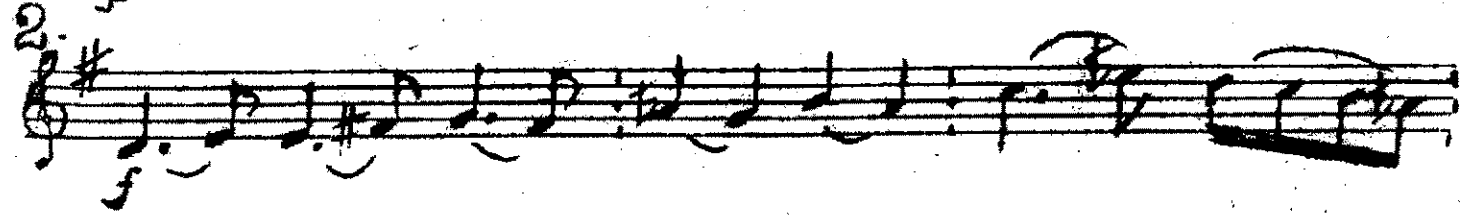
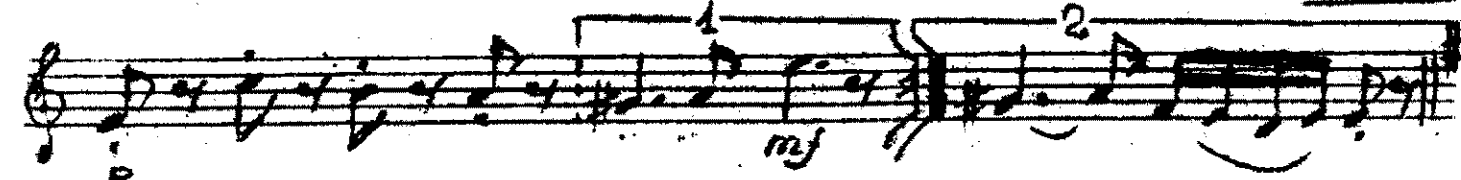
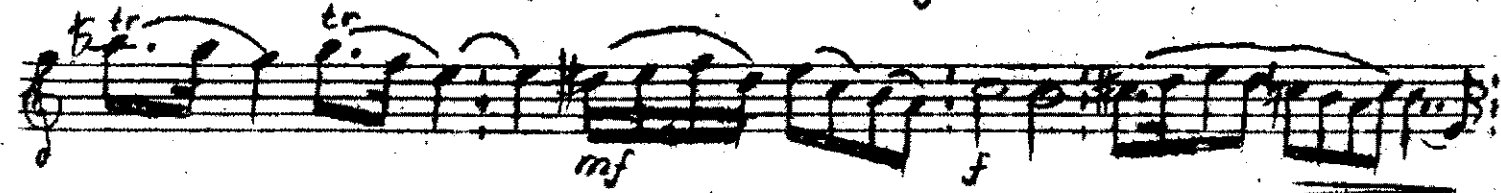
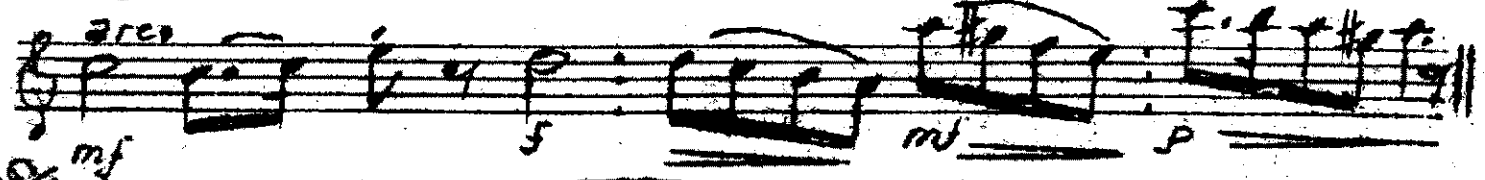
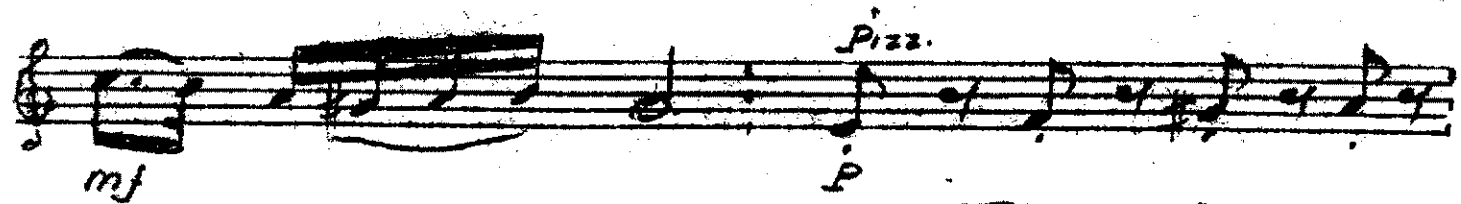
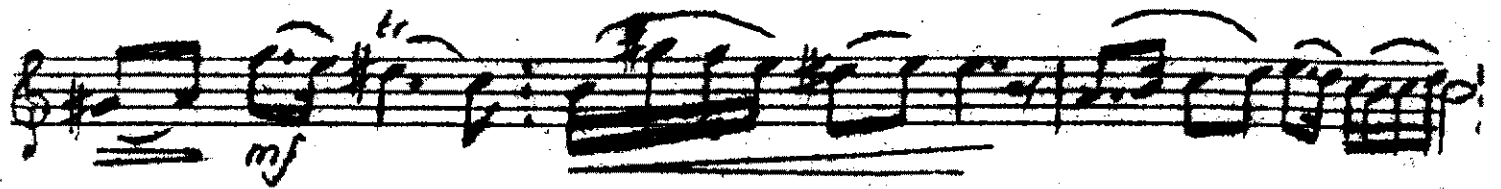
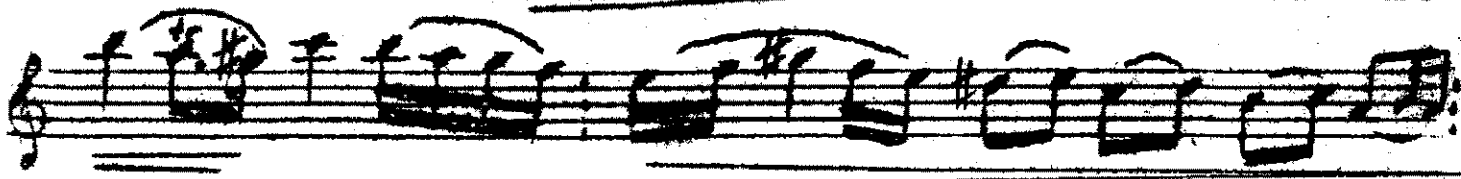


HİSAR-BUSELİK PEŞREVİ

HÜSEYİN SADEDDİN AREL



Hisar-buselik peşrevi H. Sadeddin Arslan

Handwritten musical notation on a single staff. It begins with a treble clef, a key signature of one sharp (F#), and a common time signature (C). The music consists of a series of eighth and sixteenth notes, some beamed together. A dynamic marking of *crec.* (crescendo) is written below the first few notes. A fermata is placed over the final note of the staff. A small number '2' is written in the upper right corner of the staff.

Handwritten musical notation on a single staff, continuing the melody from the previous staff. It features similar rhythmic patterns and dynamic markings.

Handwritten musical notation on a single staff, starting with a treble clef and a key signature of one sharp. It contains a series of notes with dynamic markings such as *f* and *mf*.

Handwritten musical notation on a single staff, featuring a series of notes with dynamic markings including *f*, *mf*, and *p*.

Handwritten musical notation on a single staff, continuing the melodic line with dynamic markings like *f* and *mf*.

Handwritten musical notation on a single staff, showing a series of notes with dynamic markings such as *f* and *mf*.

Handwritten musical notation on a single staff, featuring a series of notes with dynamic markings like *f* and *mf*.

Handwritten musical notation on a single staff, starting with a treble clef and a key signature of one sharp. It contains a series of notes with dynamic markings such as *mf*.

Handwritten musical notation on a single staff, featuring a series of notes with dynamic markings like *f* and *mf*.

Handwritten musical notation on a single staff, showing a series of notes with dynamic markings such as *f* and *mf*.

Handwritten musical notation on a single staff, featuring a series of notes with dynamic markings like *f* and *mf*. A small number '2' is written above the first few notes.