

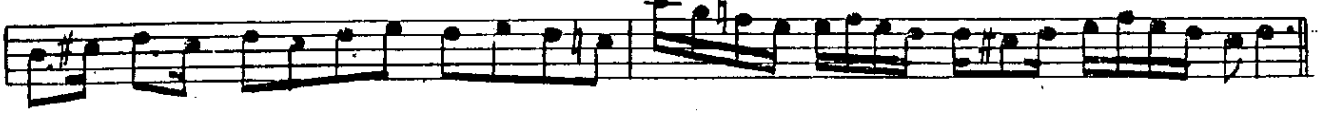
Bestersalâhı ŞARKI SENGİN SEMÂİ

FENNİ BEYİN

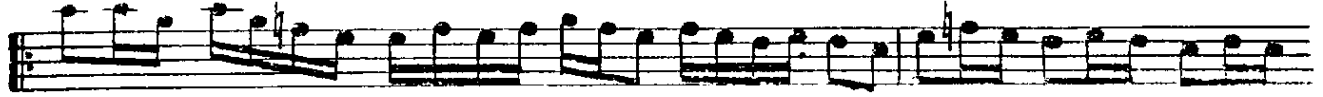
ÜF FA DE Nİ MAH RÜ MÜ SA FA



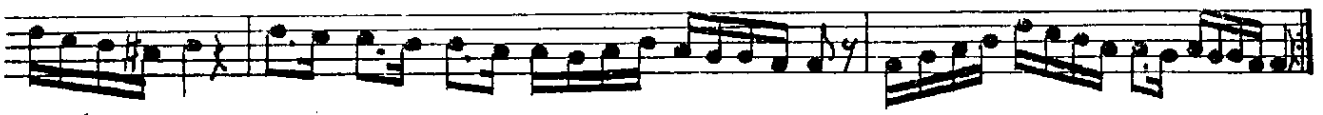
EY EY LE DİN AR TİK



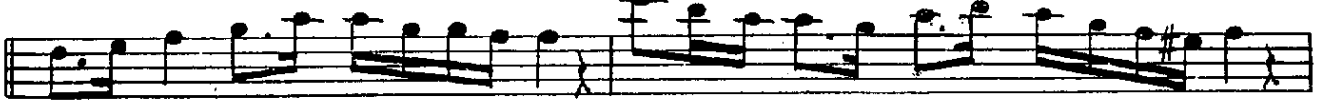
NÂ LEN DE İ HİÇ RÂ NÜ



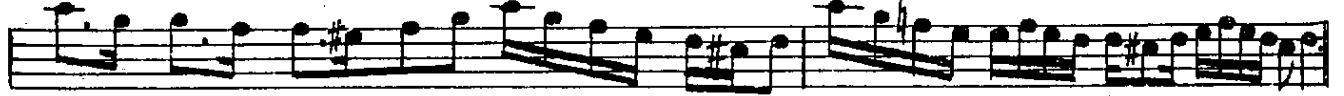
CE FA EY EY LE DİN AR TİK



BİR AT Fİ NA ZAR DAN DA CÜ DA



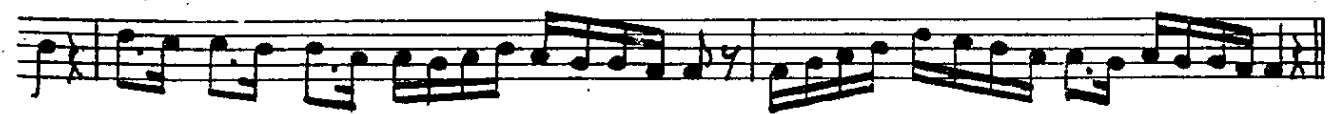
EY EY LE DİN AR TİK



ŞÂD ol BE Nİ SEN MAH VÜ HE



BÂ EY EY LE DİN AR TİK



ARA NAMESİ



- 1 -

Oftâdeni mâhrûmâ safâ eyledin artık
Nalendei hicrânü çefâ eyledin artık
Bir atfî nazardan da cûda eyledin artık

Nekarât

Şâd ol beni sen mâbvu hebâ eyledin artık

- 2 -

Seyri güle yâ nûşi meye kalmadı hâhiş
Mihnetle heman ağlamadır şimdi bana iş
Aşk ehline aşkın elemi bak ne edermiş