

HICAZKÂR PEŞREVİ

1. ci HANE

~~FAHRA~~ Muhammes FENNI BEYİN

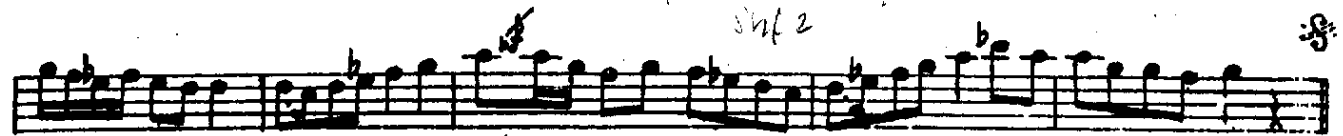
The first section of the piece, labeled "1. ci HANE", consists of seven staves of musical notation. The music is written in a single melodic line on a five-line staff. The key signature is one sharp (F#), and the time signature is 4/4. The notation includes various rhythmic values such as quarter, eighth, and sixteenth notes, along with rests and accidentals (sharps and flats). The piece concludes with a double bar line and a fermata over the final note.

TESLİM

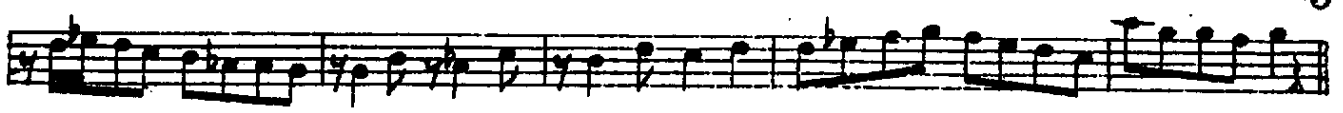
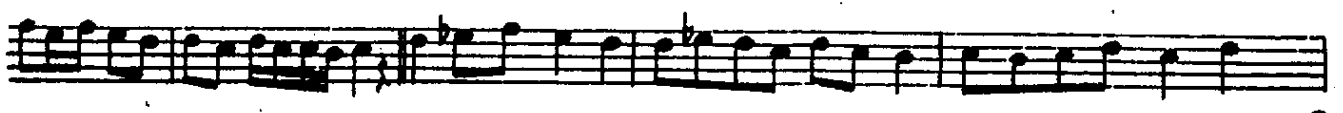
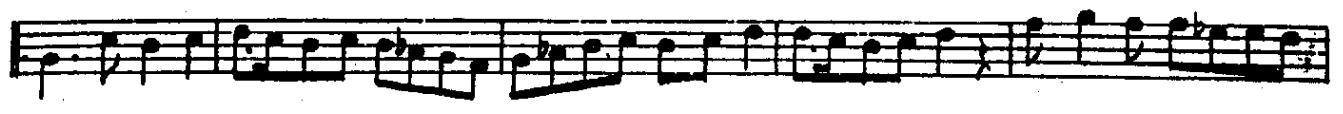
2. ci HANE

The second section of the piece, labeled "2. ci HANE", consists of four staves of musical notation. The key signature changes to one flat (Bb), and the time signature remains 4/4. The notation continues with a variety of rhythmic patterns and accidentals. The piece ends with a double bar line and a fermata over the final note.

— 3 —
Mikaelian Paganini No. 9
Sht 2



3 CÜ HANE



4 CÜ HANE

