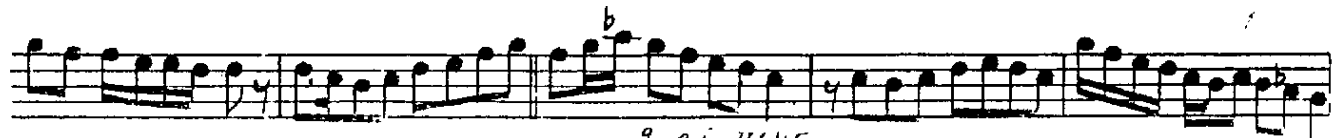
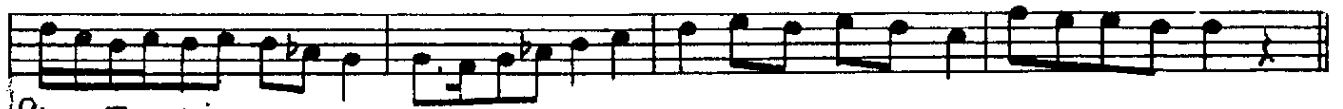
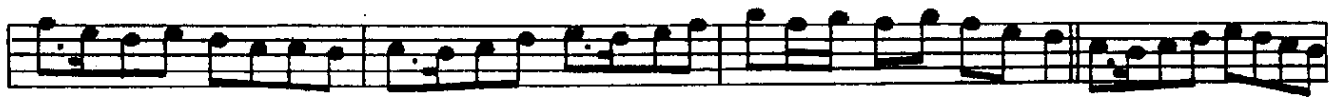


PEŞREV KÜRDİLİ HİCAZKÂR

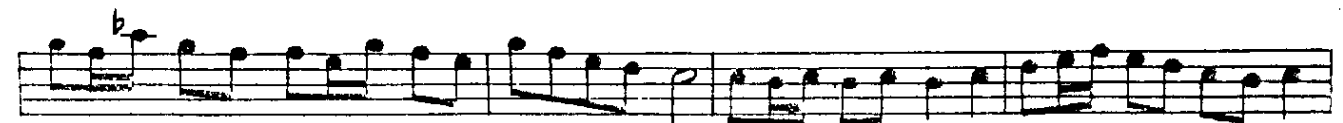
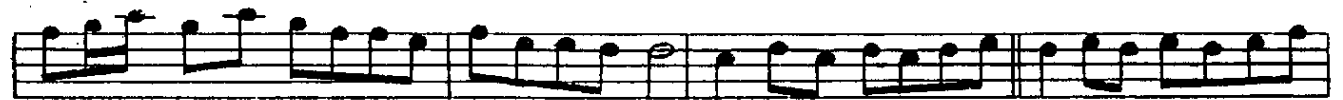
F'akta

F'ENNI BEYİN

1 CI HANE



2 CI HANE



3 CI HANE

This section of the musical score consists of five staves. The first staff begins with a treble clef and a 3/8 time signature. The melody is written in a key with one sharp (F#). A triplet of eighth notes is marked with a '3' above it in the first measure. The second staff contains a repeat sign. The third and fourth staves continue the melodic line with various accidentals, including sharps and naturals. The fifth staff concludes the section with a double bar line.

4 CI HANE

This section of the musical score consists of seven staves. It begins with a treble clef and a 4/8 time signature. The melody is written in a key with two flats (Bb). The first staff contains a repeat sign. The second staff continues the melody. The third staff features a series of eighth notes, many of which are marked with a flat. The fourth and fifth staves continue the melodic line. The sixth staff concludes the section with a double bar line. The seventh staff is a final line of music, ending with a treble clef and a double bar line.