

# MÜSTEAR PEŞREVİ

ÇENBER

FENNİ B.

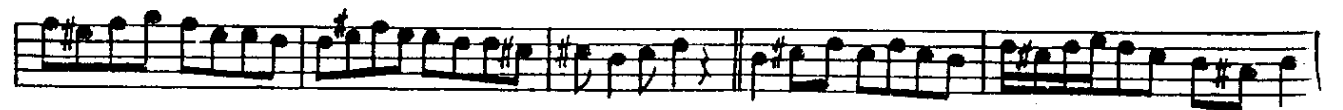
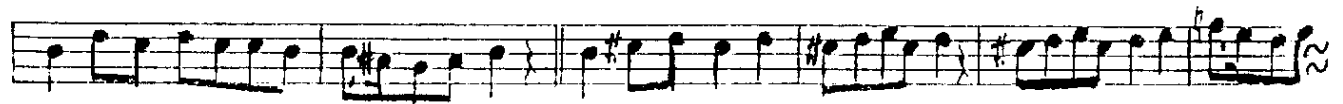
1. CI HÂNE



TESLİM



2. CI HÂNE





3 CÍ HÁNE

The first section consists of three staves of musical notation. The first staff begins with a treble clef and a key signature of one sharp (F#). The music is written in a 3/4 time signature, indicated by the '3' in the section title. The melody is primarily composed of eighth and quarter notes, with some sixteenth notes. The second and third staves continue the melodic line, with the third staff ending with a double bar line.

The second section consists of three staves of musical notation. It continues the melodic line from the first section. The first staff of this section begins with a treble clef and a key signature of one sharp. The music is written in a 3/4 time signature. The melody is primarily composed of eighth and quarter notes, with some sixteenth notes. The second and third staves continue the melodic line, with the third staff ending with a double bar line.

4 CŮ HÁNE

The third section consists of three staves of musical notation. It begins with a treble clef and a key signature of one flat (Bb). The music is written in a 4/4 time signature, indicated by the '4' in the section title. The melody is primarily composed of eighth and quarter notes, with some sixteenth notes. The second and third staves continue the melodic line, with the third staff ending with a double bar line.

The fourth section consists of three staves of musical notation. It begins with a treble clef and a key signature of one sharp (F#). The music is written in a 4/4 time signature. The melody is primarily composed of eighth and quarter notes, with some sixteenth notes. The second and third staves continue the melodic line, with the third staff ending with a double bar line.

