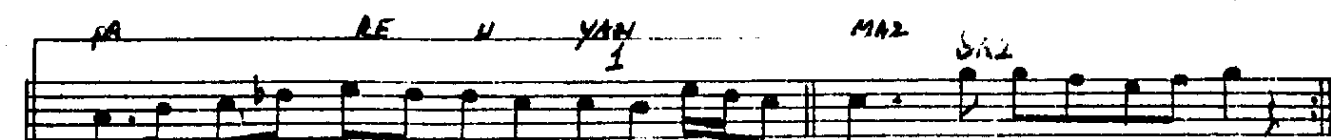
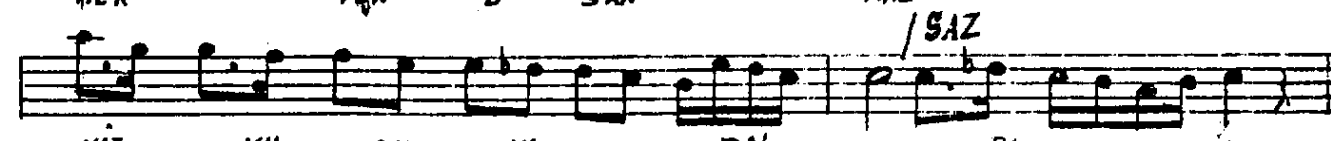
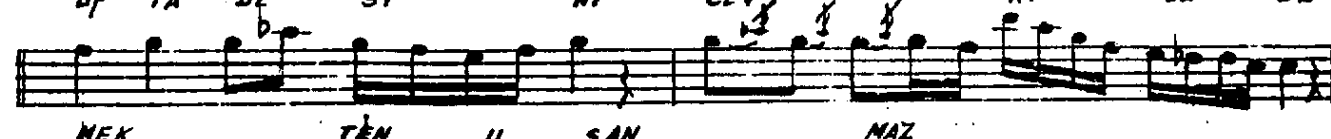
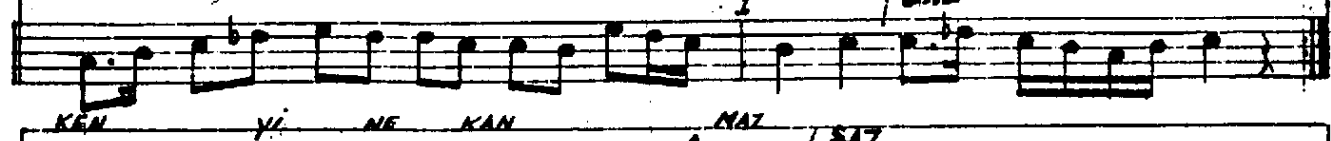
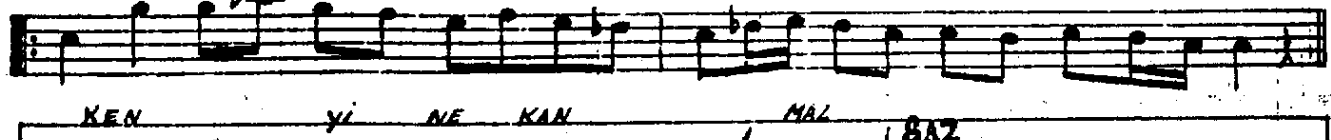
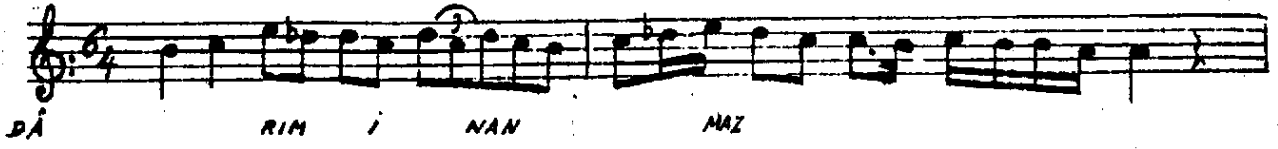
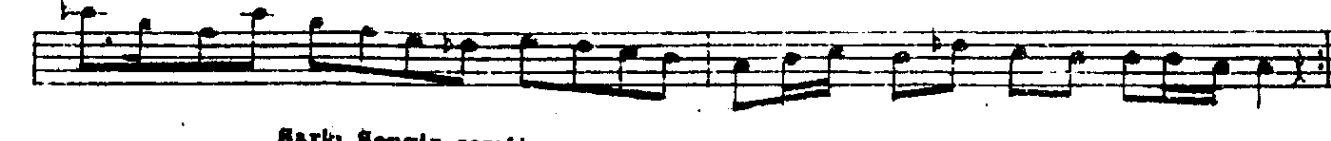


Sabâ ŞARKI SENGİN SEMÂİ FENNİ B.

AH VÂ Lİ PE Rİ ŞÂ Nİ NA DİR



ARA NAGNESİ



Şarkı Sengin semâi

Ehvâli perîşânımâ dildarım inanmaz
Kan ağladığım böyle görürken yine kanmaz
Üstâdesini cevriyle tizmekten usanmaz

Nokarât.

Nâz uykusuna daldı o mehpâre uyanmaz

Feryâdî sehergîâhıma hiç şefkâti yoktur
Nezdinde bu göz yaşlarımın kıymetî yoktur
Efgânımı güç söylemeye niyyetî yoktur