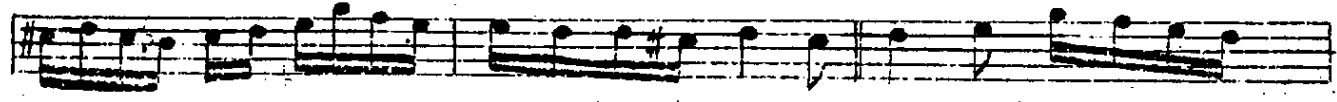
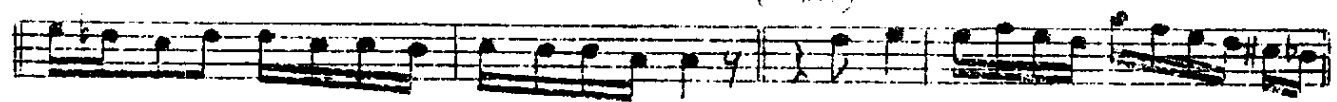
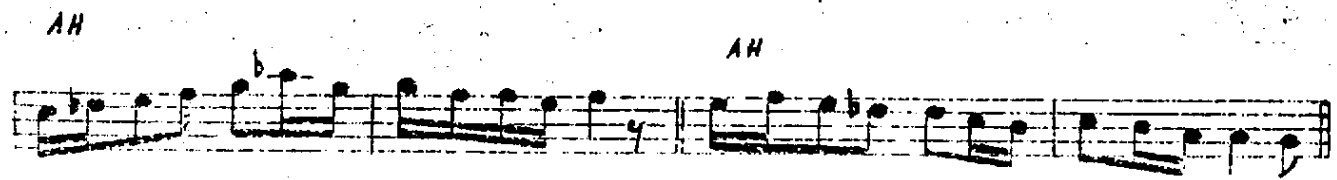
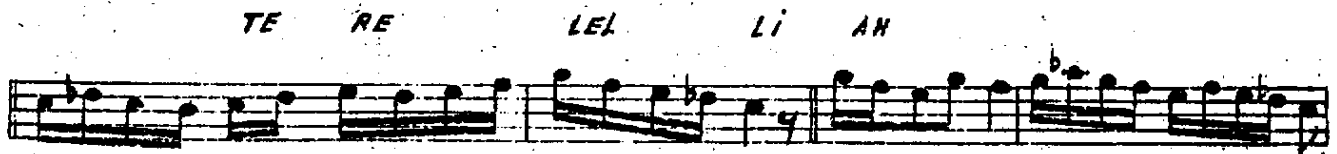
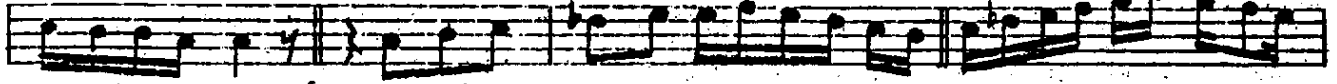
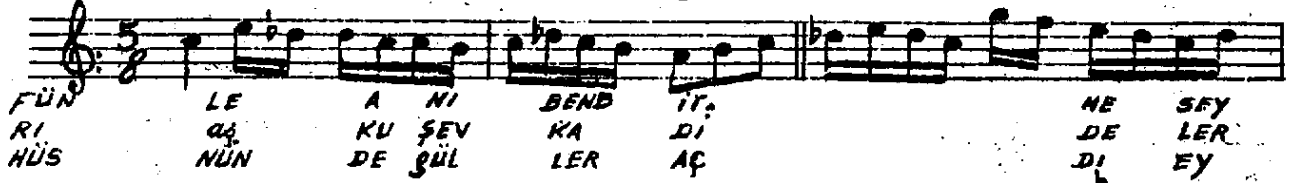


B. FENNİ B. **AKSAK SEMÂİ** GÜFTE: RAHMI B.

Sabâ

E YER ZEN CI RI ZÜL
HE ZÂ RI NEV BE HÂ
1- AH SÜ LÜN CE GÜL ŞE NI



Aksak semâi (güfte Rahmi beyin)

Gülünce gülşoni husnünde güller açdı ey gül ten
Hezâri nev belâri aşku şevka dideler rûşen
Dili diyânetini zapıtmek aslâ mümkün olmazdı
Eger zenciri zülfüne em bend ilmeseydin sen

Terennüm:

Yelee lelee yelee lelee terelee lelee terelee lelee
Ah ah ah dideler rûşen