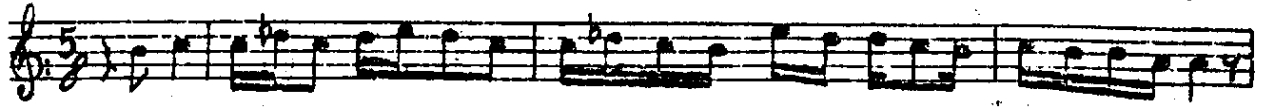
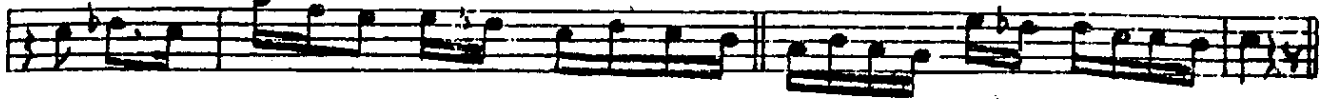


Sabâ ŞARKI AKSAK SEMÂİ TENNİ B.

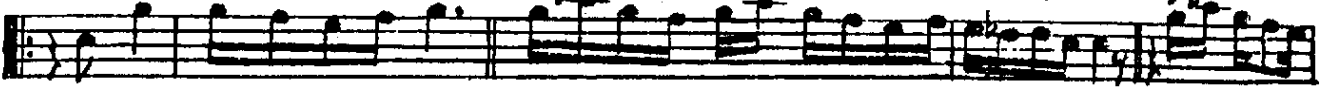
SA BÂ GİT TÂ HA Rİ Mİ YÂ



RE VAR GİR YÂ RE VAR GİR



BE NİM HA LİM DEN OL ŞU HA HA BER

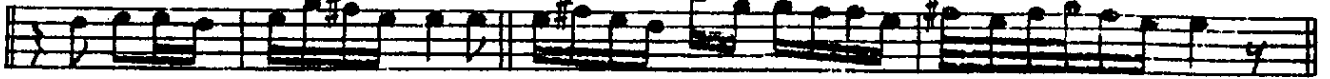


VİR AH HA BER VİR HA BER VİR

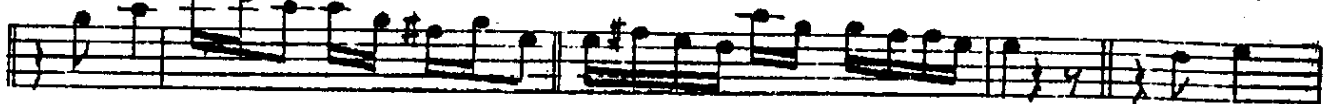


(Miyân)

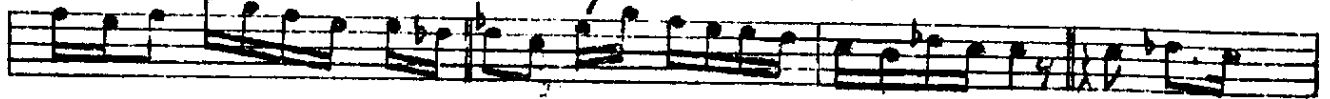
SE HER DE İT Tİ BİM FER YÂ



DI BİL DİR YÂ DI BİL DİR A NA



Â ŞİK Lİ BİM ÇOK TAN BE Rİ



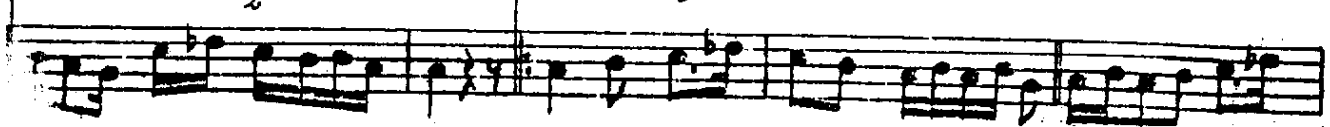
DIR AH BE Rİ DIR İ PERSÊ VAS Lİ



LA ŞÂ DÂN YE Rİ DİR AH YE Rİ DİR



YE Rİ DİR ARA NAŞMESİ



Sabâ gît tâ hârtmî yâre var gir
Benim hâllimden ol şûha haber vir
Seherde ittigin foryâdı bildir

Nakarât

Anâ aşkılgım çokdan beridir
İlerse vasile şâdan yeridir

Akar dâim gözümdeñ eşki âlim
Yok artık çekmeye hasret mecalim
Sozâyı şekâtim şûride hâlim

Fyzan