

# ŞARKI UŞŞAK

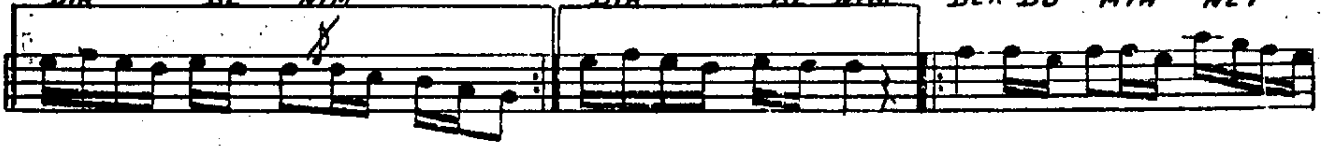
FENNİ B.

DEVRI HINDI

AŞ KU SEV DÂ MA YE İ CİS NÜ Sİ RİŞ TİM



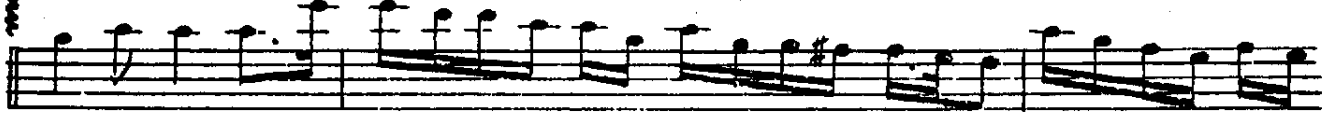
DIR BE NİM DIR BE NİM DER DU MİH NET



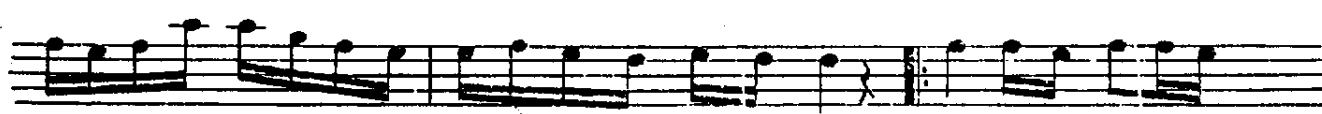
DÂ İ Mİ BİR SER GÜZEE TİM DIR BE NİM



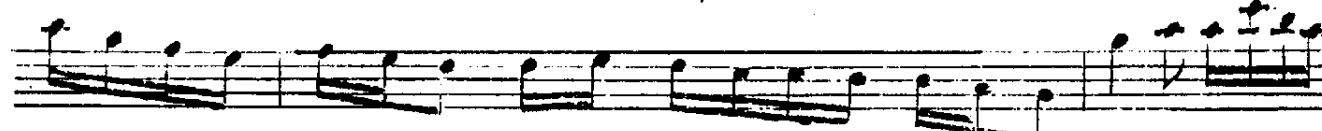
BEZ Mİ ÜN SÜ ÜL FE Tİ CÂ NÂN BE



HİŞ TİM DIR BE NİM YAN MAK AŞ



KİN A TE ŞİY LE SER NÜ VİŞ



TİM DIR BE NİM ARA NAĞMESİ

