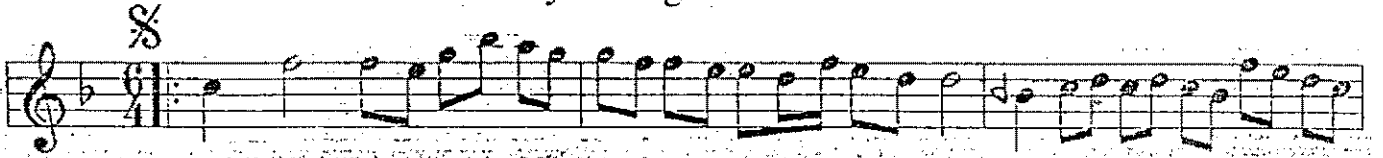


ACEMAŞIRÂN YÜRÜKSEMÂİ

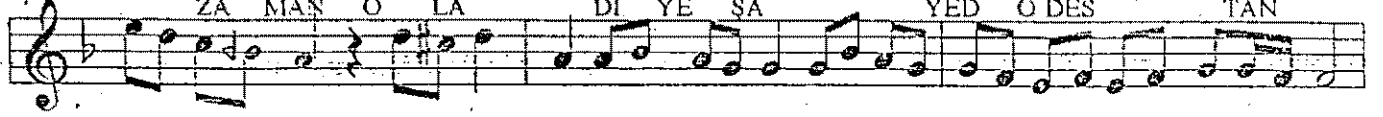
YürükSemâî

"Bileydi dil gibi dilber"

İTRİ



Bİ LEY Dİ DİL Gİ Bİ DİL BER GA Mİ Cİ HÂN
 Bİ LEY Dİ ÇEŞ Nİ İ Şİ VE İ BE YÂN
 ZA MAN O LA Dİ YE ŞÂ YED Ö DES TÂN



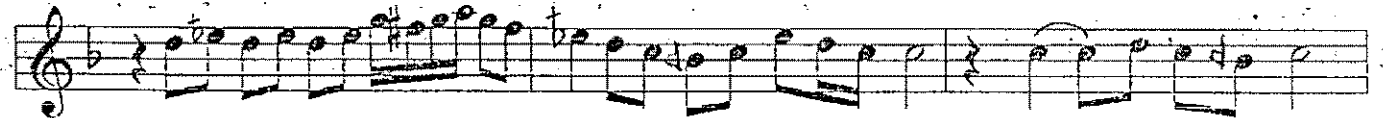
Nİ CE DİR YÂR LELEL Lİ VAY
 Nİ CE DİR
 Nİ CE DİR



YÂ LE LEL LE LEL Lİ TE RE LE LEL



LE LEL Lİ AH AH



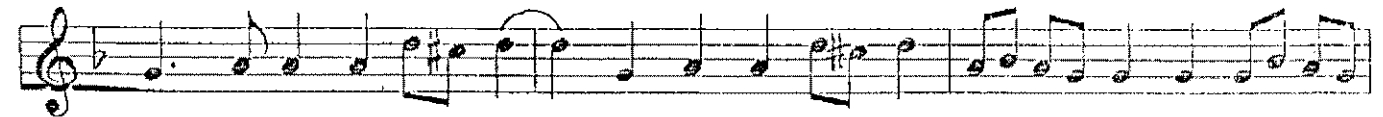
CÂ NİM YA LE LEL



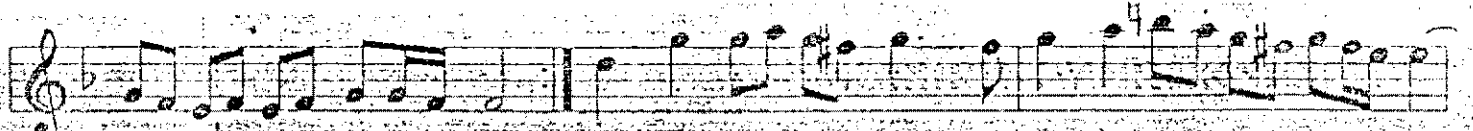
LE LEL Lİ TE RE LE LEL LE LEL Lİ



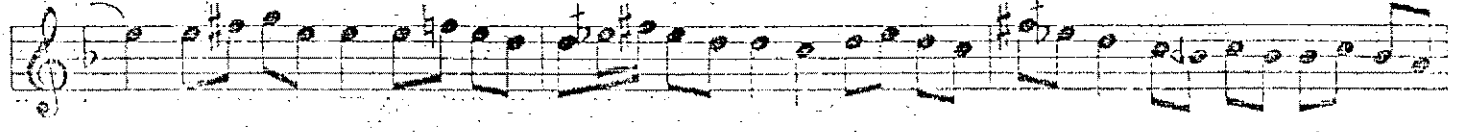
DOST LEL LEL



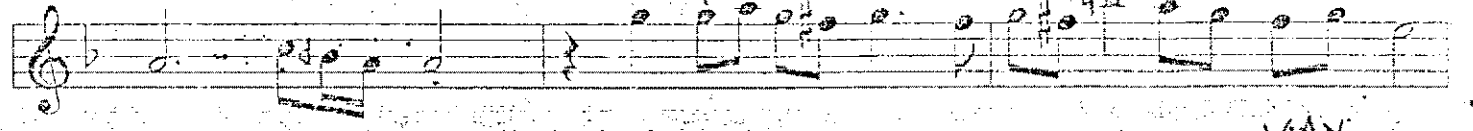
LEL Lİ YE LE YE LEL Lİ TE RE Lİ



VAY Şİ KÂ YE TİN SA KINLY NÂ LE



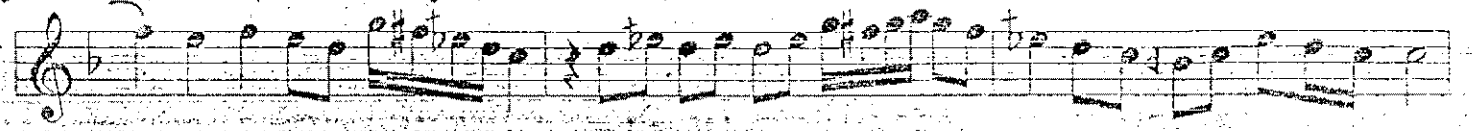
DUY MA SIN DİL DÂR YÂR LE LEL Lİ



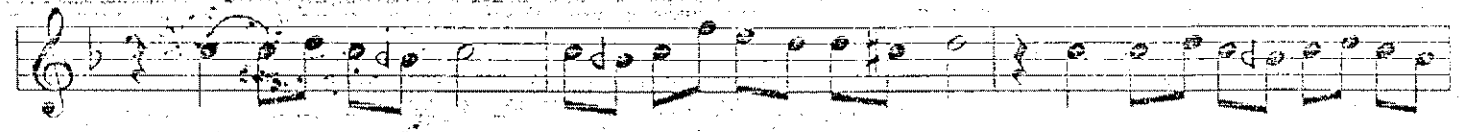
VAY YÂ LE LEL LE Lİ VAY



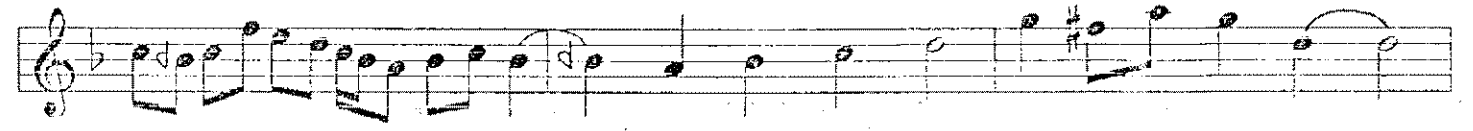
TE RE LEL LE Lİ VAY AH



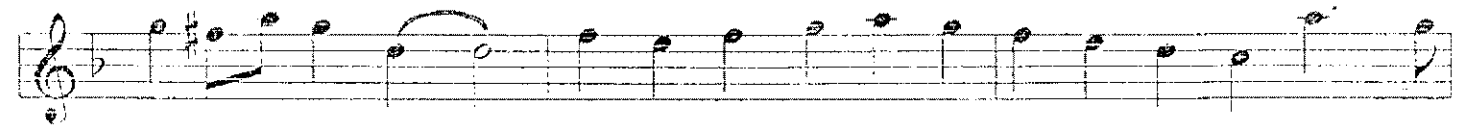
AH CÂ NİM



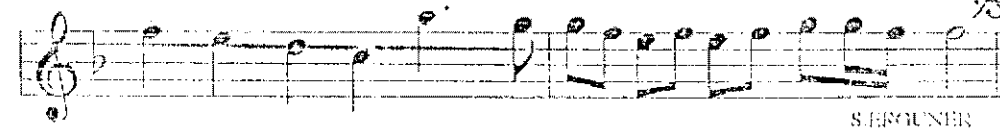
YÂ LE LEL LE LEL Lİ TE RE LE LEL



LE LEL Lİ DEST LEL



LE LEL LEL LE Lİ YÂ LE YE LEL



Lİ TE RE Lİ VAY

SERFÖNER

Torun Süleyman Ergüvenç'den
Babesi Ulvi Ergüvenç'den gelmiştir?

BİLEYDİ DİL GİBİ DİLBER GÂMI CİHÂN NİCEDİR
BİLEYDİ ÇEŞNİ-İ ŞİVE-İ BEYÂN NİCEDİR
ŞİKÂYETİN SAKIN EY NÂLE, DUYMASIN DİLDÂR
ZAMAN OLA DİYE SÂYED, O DESTÂN NİCEDİR