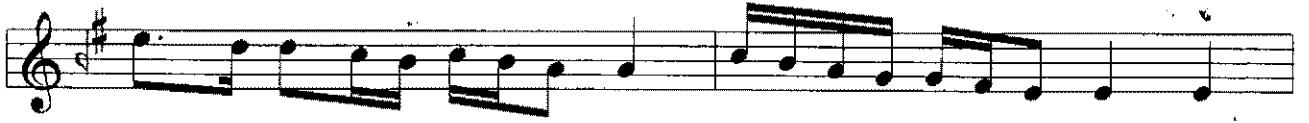


UŞŞAK AŞIRAN PEŞREV

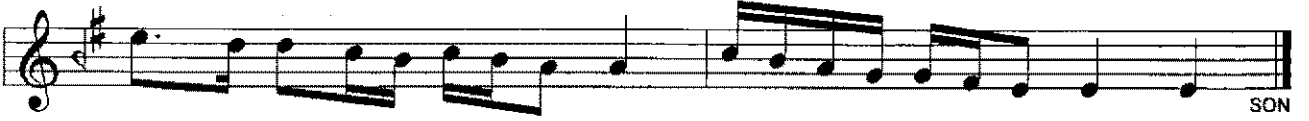
USÛL: DARBE-FETİH

Birinci Hane

BESTE: KANTEMİROĞLU



Mülâzime §



İkinci Hane



Zeyl

The musical notation for 'Zeyl' consists of four staves of music. The key signature is one sharp (F#), indicating G major. The first staff begins with a treble clef and a common time signature. The melody is composed of eighth and sixteenth notes, with some rests. The second and third staves continue the melodic line with similar rhythmic patterns. The fourth staff concludes the piece with a final note and a fermata-like symbol.

Üçüncü Hane

The musical notation for 'Üçüncü Hane' consists of four staves of music. The key signature is one sharp (F#), indicating G major. The first staff begins with a treble clef and a common time signature. The melody is composed of eighth and sixteenth notes, with some rests. The second and third staves continue the melodic line with similar rhythmic patterns. The fourth staff concludes the piece with a final note and a fermata-like symbol.