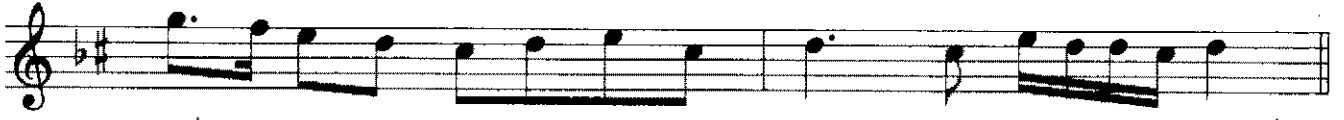
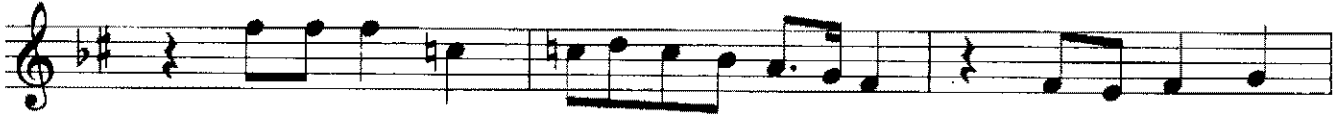
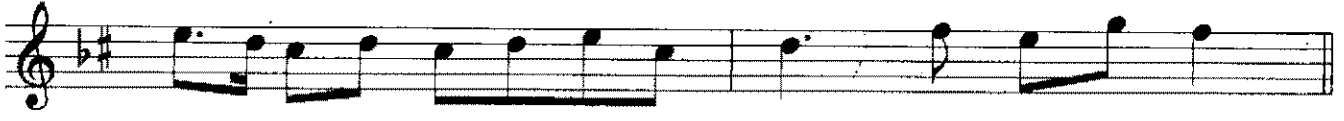
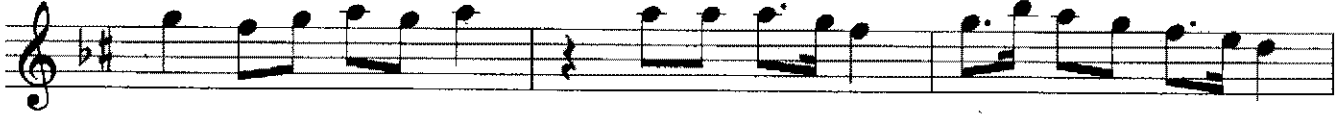


SULTÂNİYEGÂH PEŞREVİ

MÜZİK:KÂNÜNİ HACI ÂRIF BEY

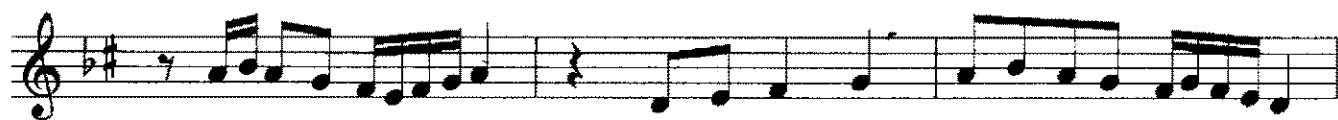
USÛLÜ:MUHAMMES

$\text{♩} = 96$

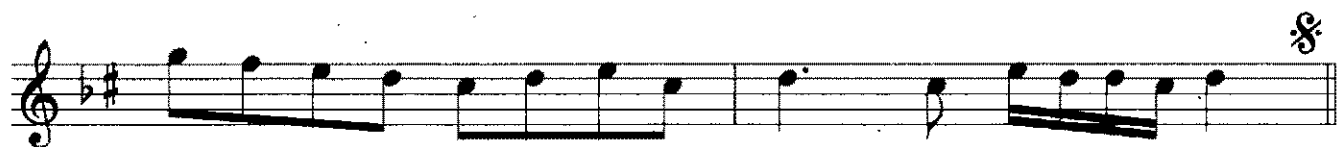
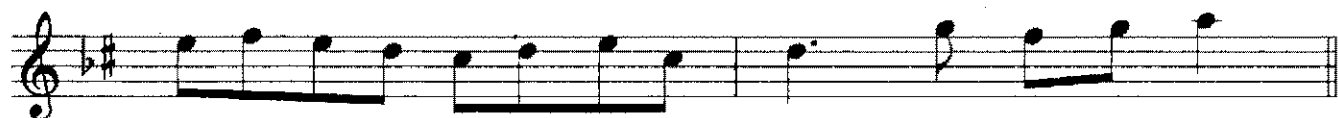
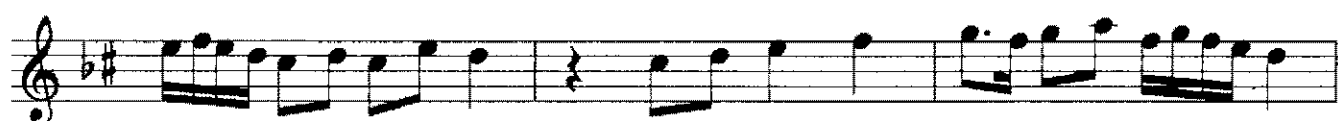
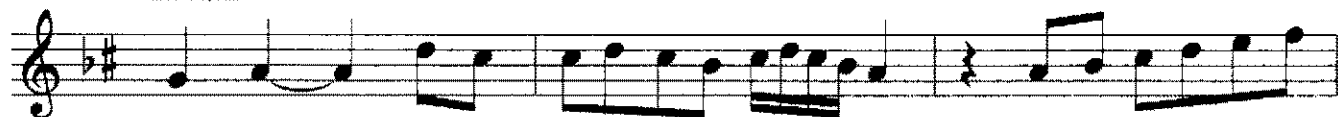


♩ TESLİM

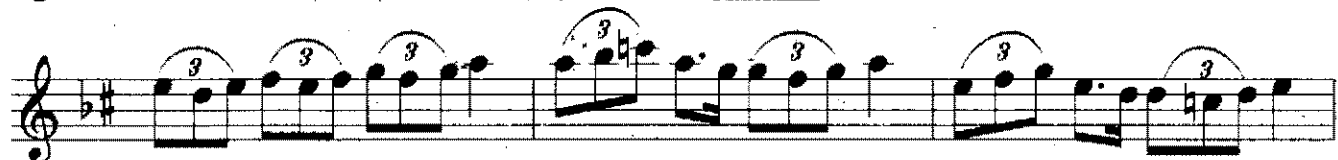




2.HANE



3.HANE



The first three staves of the musical score are in treble clef with a key signature of one flat and one sharp (B-flat and F-sharp). The first staff contains a melodic line with eighth and sixteenth notes, ending with a triplet of eighth notes. The second and third staves feature a more complex texture with eighth-note patterns and several triplet markings over groups of notes.

4. HANE

The remaining staves continue the musical piece. The fourth and fifth staves show rhythmic patterns with eighth notes and some rests. The sixth and seventh staves feature dense sixteenth-note passages. The eighth staff concludes with a section labeled 'KARAR' (Coda), marked with a double bar line and a coda symbol. The piece ends with a final melodic phrase and a fermata.