

HİSAR BUSELİK PEŞREV

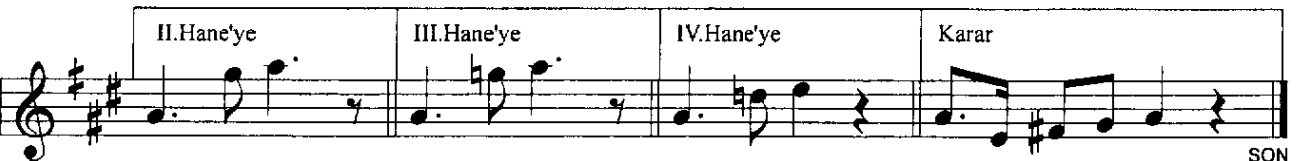
USÛL: DEVR-İ KEBİR

Birinci Hane

BESTE: TANBURI KEMAL BATANAY



Mülâzime §



İkinci Hane

Musical notation for the second hane (İkinci Hane). It consists of four staves of music in a single system. The key signature is two sharps (F# and C#). The notation includes various rhythmic values, slurs, and a fermata at the end of the fourth staff.

Üçüncü Hane

Musical notation for the third hane (Üçüncü Hane). It consists of four staves of music in a single system. The key signature is two sharps (F# and C#). The notation includes various rhythmic values, slurs, and a fermata at the end of the fourth staff.

Dördüncü Hane

Musical notation for the fourth hane (Dördüncü Hane). It consists of four staves of music in a single system. The key signature is two sharps (F# and C#). The notation includes various rhythmic values, slurs, and a fermata at the end of the fourth staff.