

# ISFAHANEK PEŞREV

USÛL: AĞIR DÜYEK

BESTE: KEMANİ ALİ AĞA

*Birinci Hane*



*Mulazime*

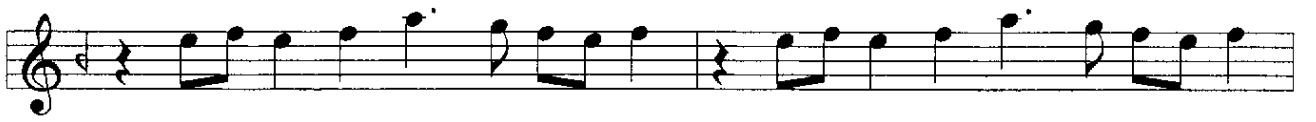


*İkinci Hane*





*Üçüncü Hane*



*Dördüncü Hane*



The image displays six staves of musical notation in treble clef, 4/4 time signature. The notation includes various notes, rests, and accidentals. The first staff begins with a treble clef, a 4/4 time signature, and a key signature of one sharp (F#). The melody consists of quarter and eighth notes, with some notes marked with a sharp (#). The second staff continues the melody, featuring a quarter rest followed by a quarter note, and then a series of eighth notes. The third staff shows a sequence of eighth notes, some with a sharp (#) and some with a flat (b). The fourth staff includes a quarter rest, followed by a quarter note, and then a series of eighth notes. The fifth staff continues the melody with a quarter rest, a quarter note, and then a series of eighth notes. The sixth staff concludes the piece with a quarter rest, a quarter note, and then a series of eighth notes, ending with a double bar line and a fermata symbol.

Bu eser TRT Müzik Dairesi Arşivinden alınmıştır.