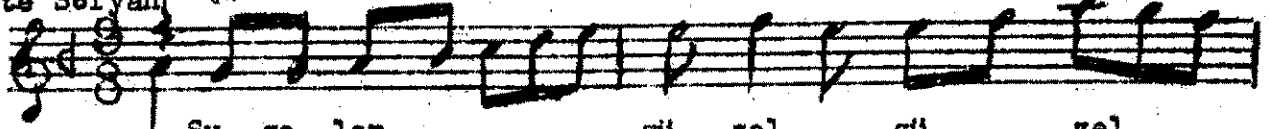


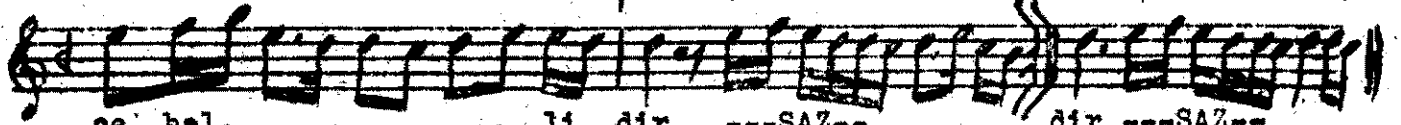
## UŞŞAK ŞARKI

Kemal Rıza Bey  
(M.N.Selçuk'dan)

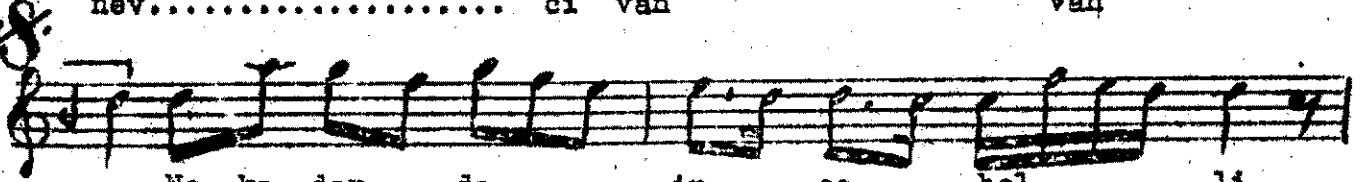
Çifte Sofyan



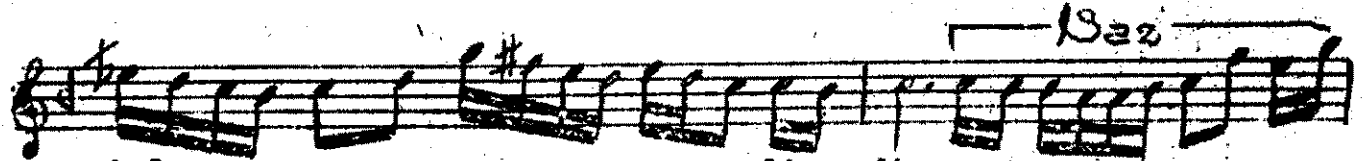
Su ge len..... gü zel gü zel  
O se vim li yos ma.....



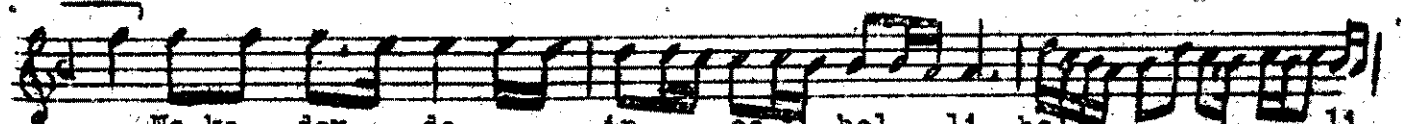
ce bel..... li dir ---SAZ--- dir ---SAZ---  
nev..... ci van van



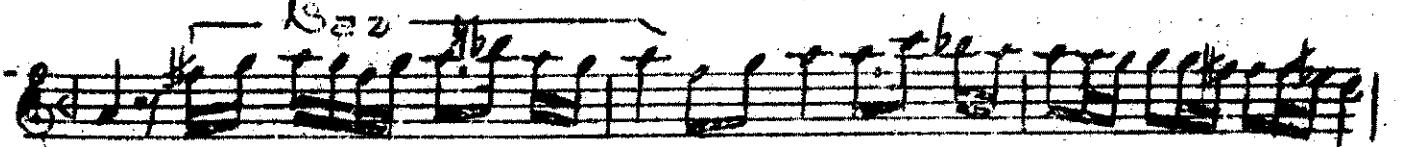
Ne ka dar da in ce bel li  
Bu e da i le ..... o



böl..... li dir  
mih..... ri ban



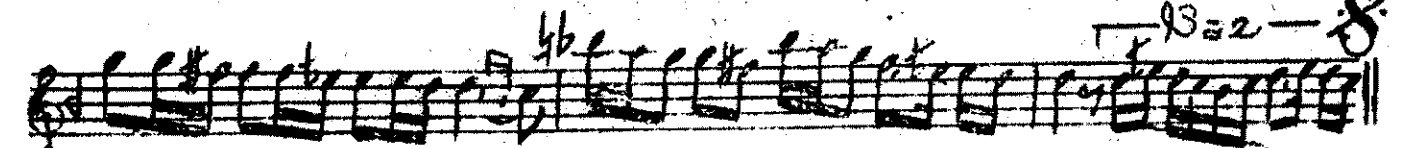
Ne ka dar da.... in ce bel li bel..... li  
o e da i le o mihi ri



dir Saç la rı sır..... ma tel..... li  
ban Ya kaçak ci ha nı .. el

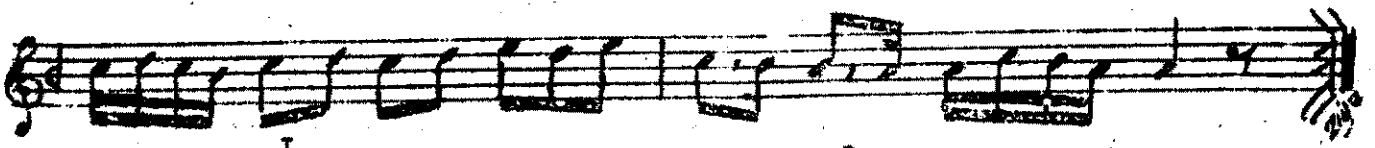
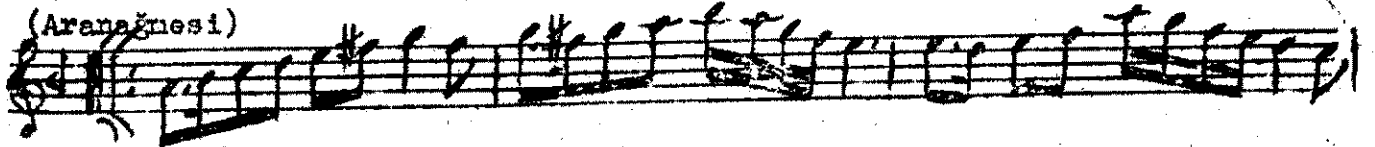


tel..... li dir Saç la rı sır...  
el a nan ya kaçak ci



ma tel..... li tel..... li dir  
ha nı el el a nan

(Aranağnesi)



Şu gelen güzel<sup>1</sup> cebellidir  
Ne kadar da ince bellidir  
Saçları sırma tellidir  
Yakışıklı kelli fellidir.

O sevinli yosma nevcivan  
Bu eda ile o mihriban  
Yakacak cihanı elaman  
Ne kadar da ince bellidir.