


# SÛZİNÂK PEŞREV

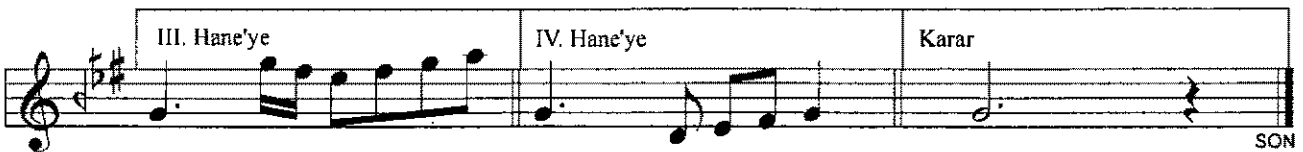
USÛL: ÇEMBER

*Birinci Hane*

BESTE: KEMANİ TATYOS EFENDİ



*Mülâzime* 



*İkinci Hane*

The second hane consists of six staves of music. The key signature is one sharp (F#) and the time signature is 2/4. The notation includes various rhythmic patterns, including eighth and sixteenth notes, and rests. A triplet of eighth notes is marked with a '3' above it. The hane concludes with a double bar line and a repeat sign.

*Üçüncü Hane*

The third hane consists of six staves of music. The key signature is one sharp (F#) and the time signature is 2/4. The notation includes various rhythmic patterns, including eighth and sixteenth notes, and rests. The hane concludes with a double bar line and a repeat sign.

Dördüncü Hane

The image displays a musical score for a piece titled "Dördüncü Hane". The score is written in G major, indicated by one sharp (F#) on the treble clef. It consists of six staves of music. The first staff begins with a treble clef, a key signature of one sharp (F#), and a common time signature (C). The melody starts with a quarter note G4, followed by eighth notes A4, B4, and C5, then a quarter rest, and continues with eighth notes B4, A4, G4, F#4, E4, D4, C4, and B3. The second staff continues the melody with eighth notes A3, G3, F#3, E3, D3, C3, and B2, followed by a triplet of eighth notes (G3, F#3, E3) and eighth notes D3, C3, B2, A2, G2, F#2, E2, and D2. The third staff features eighth notes C2, B1, A1, G1, F#1, E1, D1, and C1, followed by eighth notes B1, A1, G1, F#1, E1, D1, C1, and B1. The fourth staff continues with eighth notes A1, G1, F#1, E1, D1, C1, B1, and A1, followed by eighth notes G1, F#1, E1, D1, C1, B1, A1, and G1. The fifth staff features eighth notes F#1, E1, D1, C1, B1, A1, G1, and F#1, followed by eighth notes E1, D1, C1, B1, A1, G1, F#1, and E1. The sixth staff continues with eighth notes D1, C1, B1, A1, G1, F#1, E1, and D1, followed by eighth notes C1, B1, A1, G1, F#1, E1, D1, and C1. The piece concludes with a double bar line and a fermata symbol (a stylized infinity symbol) above the final note.