

ISFAHAN ZEMZEME PEŞREV

USÛL: HÂVÎ

BESTE: LAVTACI ANDON

Birinci Hane

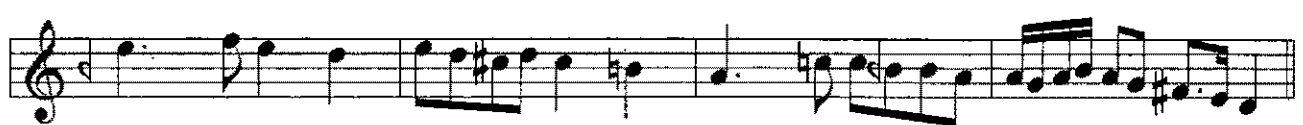
Musical notation for the first hane of the Isfahan Zemzeme Peşrev. The notation is written on seven staves in 6/4 time. The melody begins with a quarter rest, followed by a series of eighth and sixteenth notes, including some beamed sixteenth notes. The key signature has one sharp (F#). The piece concludes with a quarter rest.

Mulâzime

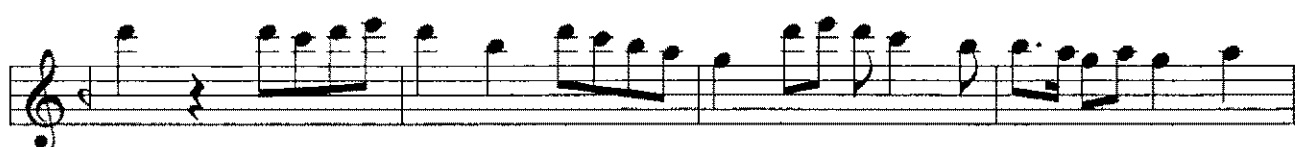
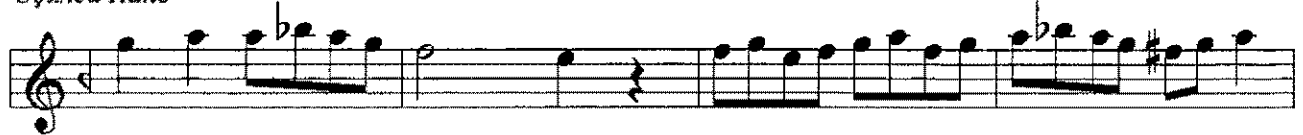
Musical notation for the Mulâzime section of the Isfahan Zemzeme Peşrev. The notation is written on two staves in 6/4 time. The melody begins with a quarter rest, followed by a series of eighth and sixteenth notes, including some beamed sixteenth notes. The key signature has one flat (Bb). The piece concludes with a quarter rest and the word "SON" at the end of the second staff.

İkinci Hane

Musical notation for the second hane of the Isfahan Zemzeme Peşrev. The notation is written on two staves in 6/4 time. The melody begins with a quarter rest, followed by a series of eighth and sixteenth notes, including some beamed sixteenth notes. The key signature has one sharp (F#). The piece concludes with a quarter rest.



Üçüncü Hane



Dördüncü Hane

The image displays a musical score for a piece titled "Dördüncü Hane". The score is written on six staves, each beginning with a treble clef and a common time signature (C). The music is composed of eighth and sixteenth notes, often beamed together in groups. The key signature is one sharp (F#), and the time signature is common time. The piece concludes with a double bar line and a repeat sign (two dots) at the end of the sixth staff.

Bu eser TRT Müzik Dairesi Arşivi'nden alınmıştır.