

ŞEHO-İ ARBÂN ŞARKI

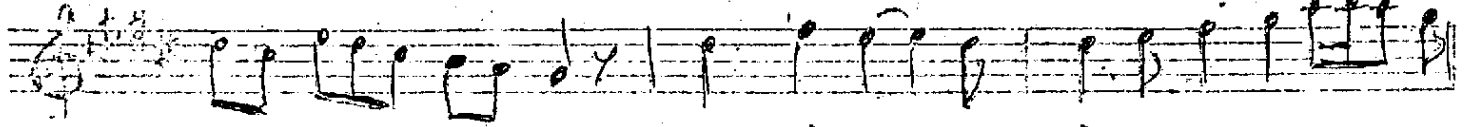
Bestekârı :

Circuna (BEN SANA HASREYLEMİŞİM ÖMRÜMÜ ÂMÂLİNİ)

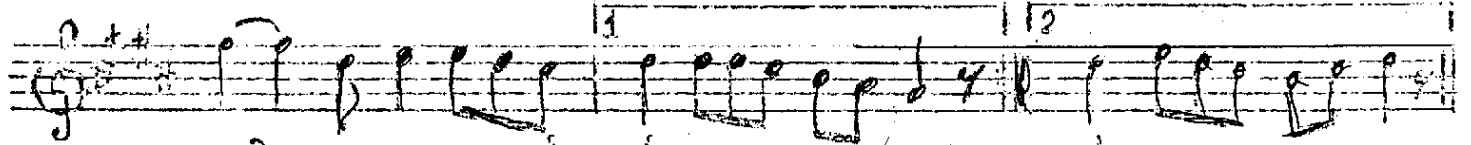
LEYLA HANIM



BEN SA NA - - HAS - - REY LE Mİ - -



SİM ÖM RÜ MÜ Â



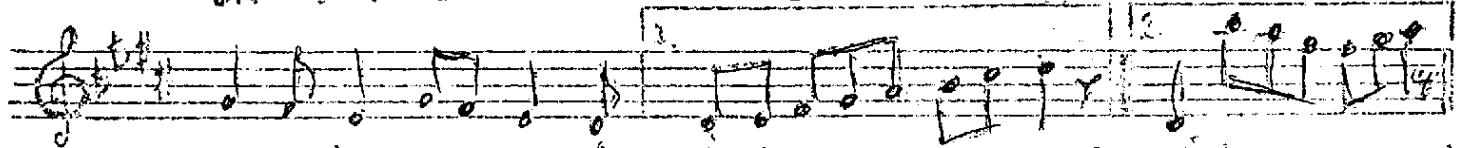
MÂ Lİ Mİ (- SAZ - -) Mİ (- SAZ -)



HA KI SÂR - - ET - - SİM YO LUN



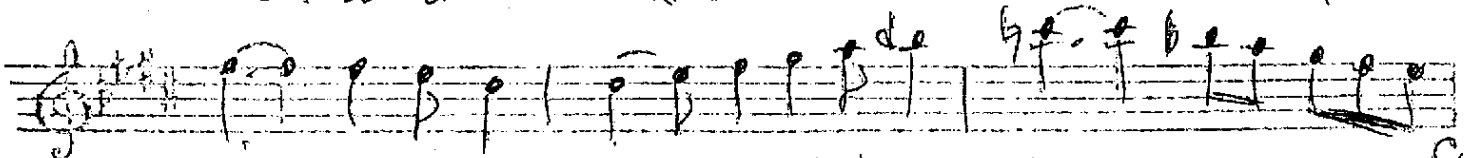
DA KAL BI Mİ



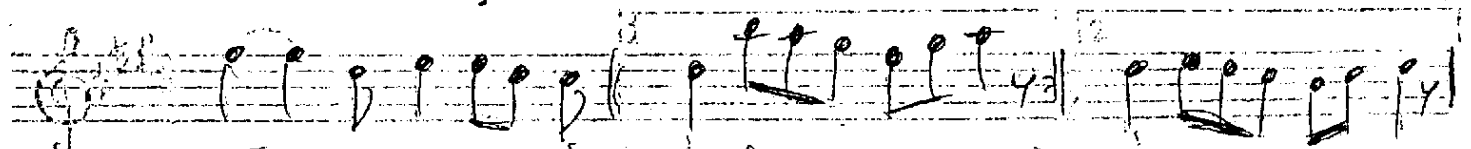
BÂ Lİ Mİ (- SAZ - -) Mİ (- SAZ -)



SÖY LE LÂ - - KAY - - DA NE GEÇ - -



Fİ SÖZ - MA DÂR - - AK



VÂ Lİ Mİ (- SAZ - -) Mİ (- SAZ - -)

BEN SANA HASREYLEMİŞİM ÖMRÜMÜ ÂMÂLİNİ
MÂNSÂF EĞİTİM YOLUNDA HALİMİ İZİN GÖY
SÖYLE İZLETİRİM ŞEHO-İ ARBÂN ŞARKINI
LÂYLAHANIMIN HANIMIN HANIMIN