

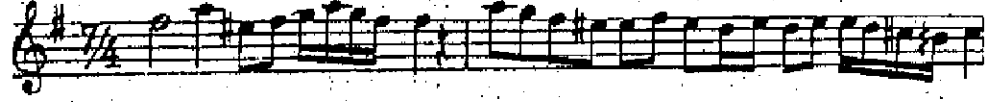
# EVİC

# İLÂHÎ

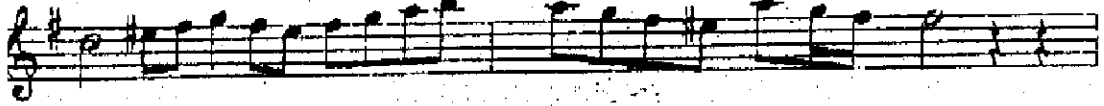
*Güftesinin sahibi meşhuldur.*

*Bestesi : İsmail Hakkı Beyindir*

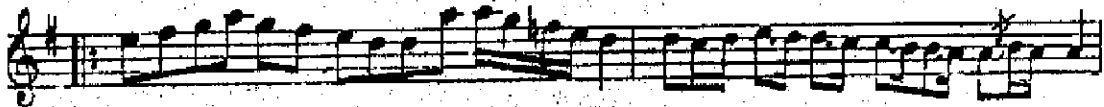
*Ağır Devri hindi (♩7/4)* kul la rı — n da yo — k sa na — lâ —



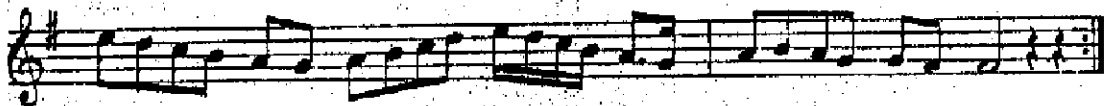
yık me ta — lâ — yı — k me — ta



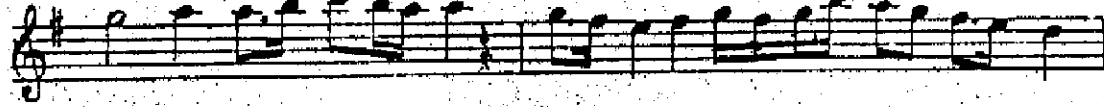
E — l ve da — şe — h ri — re me — za — n



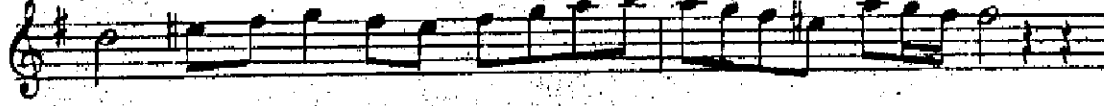
e — l ve da — e — l ve da



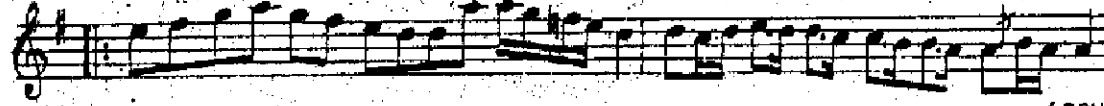
sen den a — l dık nu — ri i — ma — n



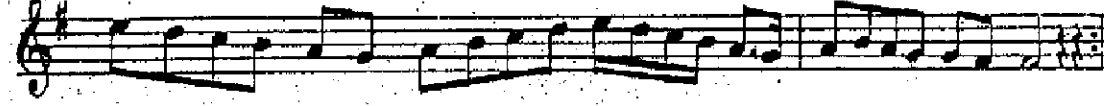
pür şü a — pür — r şü a



E — l ve da — şe — h ri — re me — za — n



e — l ve da — e — l ve da (SON)



## GÜFTESİ

*Kullarında yok sana lâayık meta*

*Elveda şehri remezan elveda*

*Senden aldık nuri iman pür şüa*

*Elveda şehri remezan elveda*