

KURDİHİÇKAR  
ŞARKE

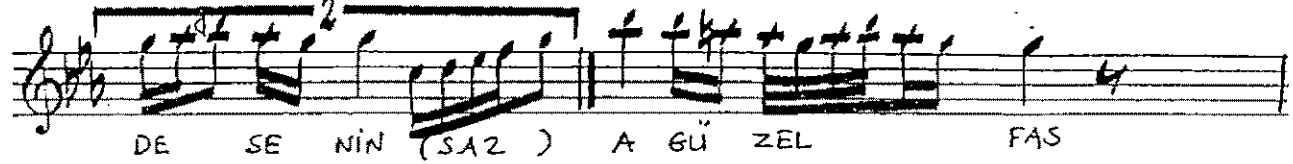
MUSEM MEN



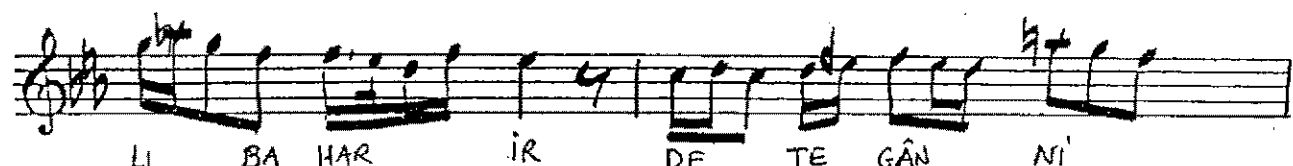
GÖ ZE DİR YÜM Nİ LE TES Rİ



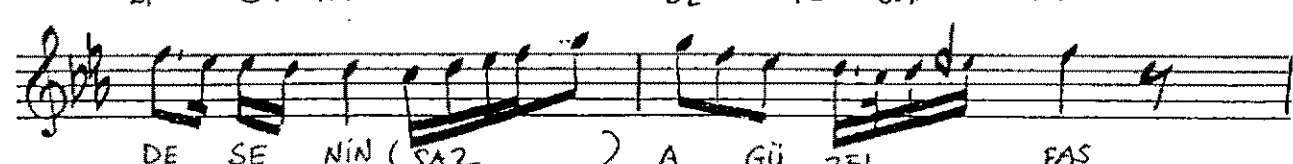
Fİ Nİ HER Dİ DE SE NİN (SAZ )



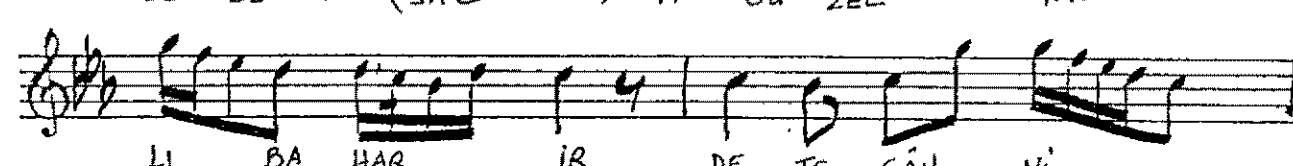
DE SE NİN (SAZ ) A GÜ ZEL FAS



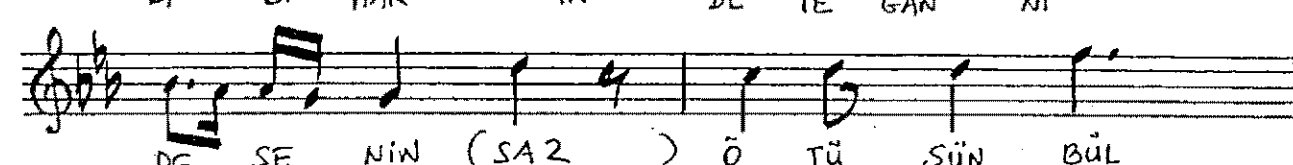
Lİ BA HAR İR DE TE GÂN Nİ



DE SE NİN (SAZ ) A GÜ ZEL FAS



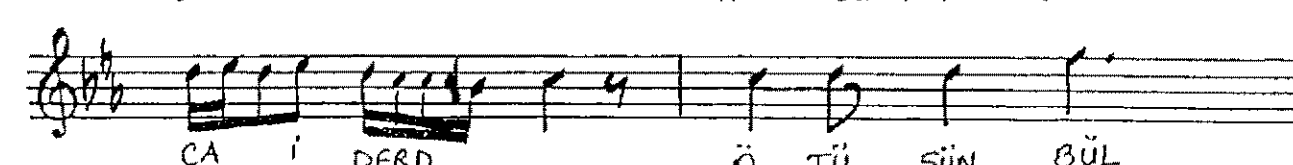
Lİ BA HAR İR DE TE GÂN Nİ



DE SE NİN (SAZ ) Ö TÜ ŞÜN BÜL



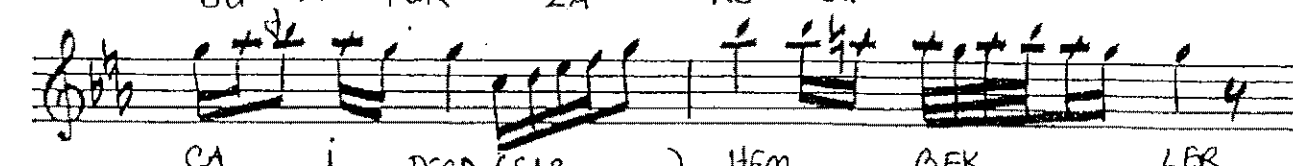
BÜ Lİ PÜR ZA RE GÜ LÜN GON



CA İ DERD Ö TÜ ŞÜN BÜL



BÜ Lİ PÜR ZA RE GÜ LÜN GON



CA İ DERD (SAZ ) HEM BEK LER

NI CE DEM ZA RI NI ŞU RI

DE SE NIN (SAZ ) HEM BEK LER

NI CE DEM ZA RI NI ŞU RI

DE SE NIN HİÇKÂR ARANÇIYI