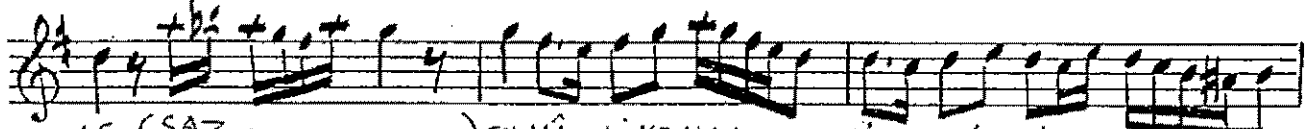


# MAHUR ŞARKIYA

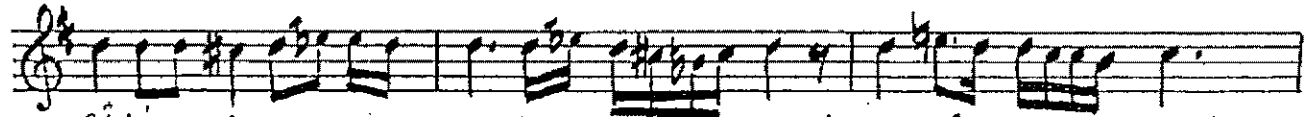
EVFER



KAL BİM DE Kİ A MÂ Lİ PE Rİ ŞA NİMİ DİN



LE (SAZ - - - - -) EY HÂ Lİ KE MAN GİR YE İ HİC



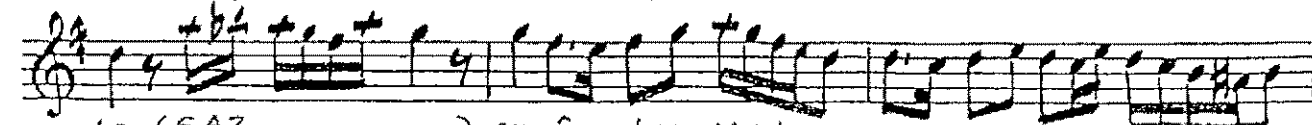
RÂ Nİ LE İN LE (SAZ - - - - -) EY HÂ Lİ KE MAN



GİR YE İ HİC RÂ N İ LE İN LE (SAZ - - - - -)



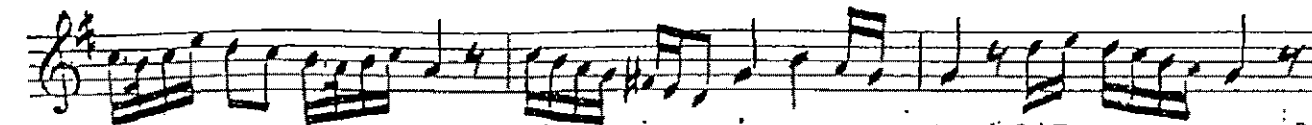
RU HÛM DÂ NE HİR LER LO ŞU YOR NÂ Ğ ME LE RİN



LE (SAZ - - - - -) EY HÂ Lİ KE MAN GİR YE İ HİC



RÂ N İ LE İN LE (SAZ - - - - -) EY HÂ Lİ KE MAN



GİR YE İ HİC RÂ N İ LE İN LE (SAZ - - - - -)

